

Istanbul - Juin 2008, juin 2009



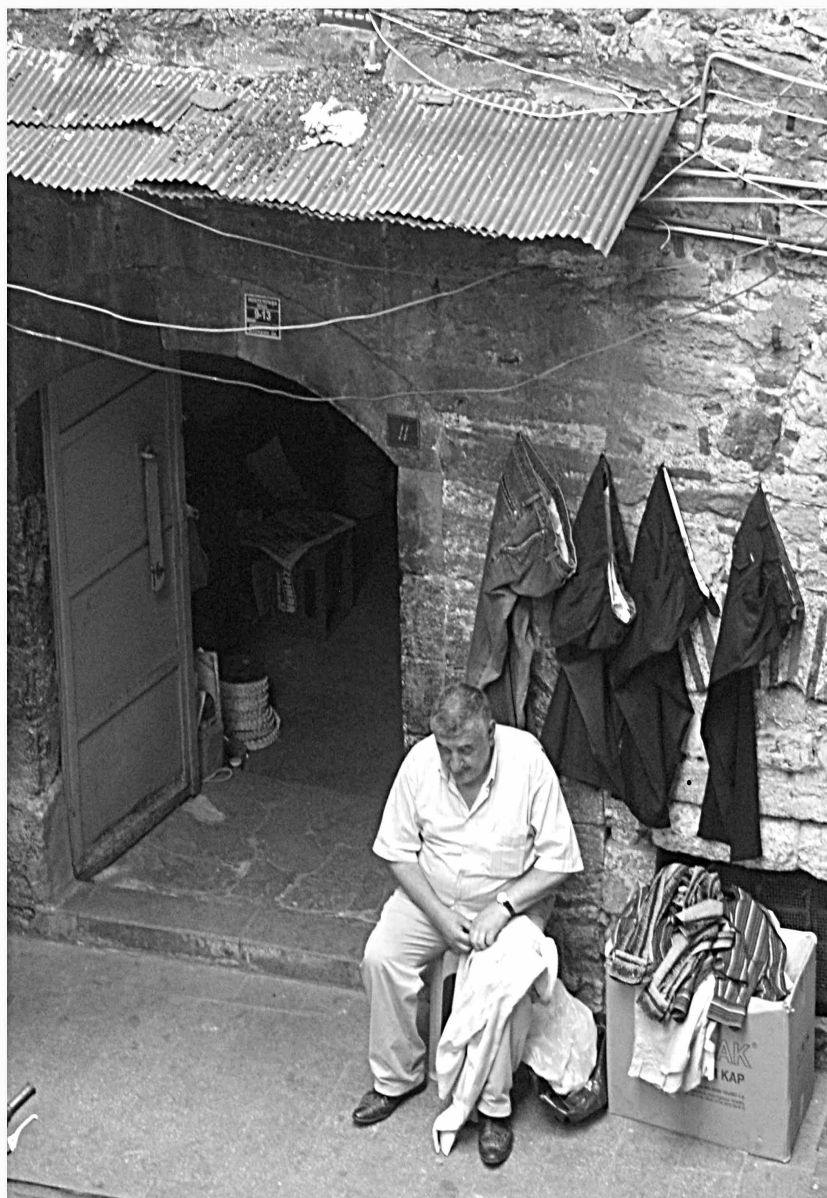


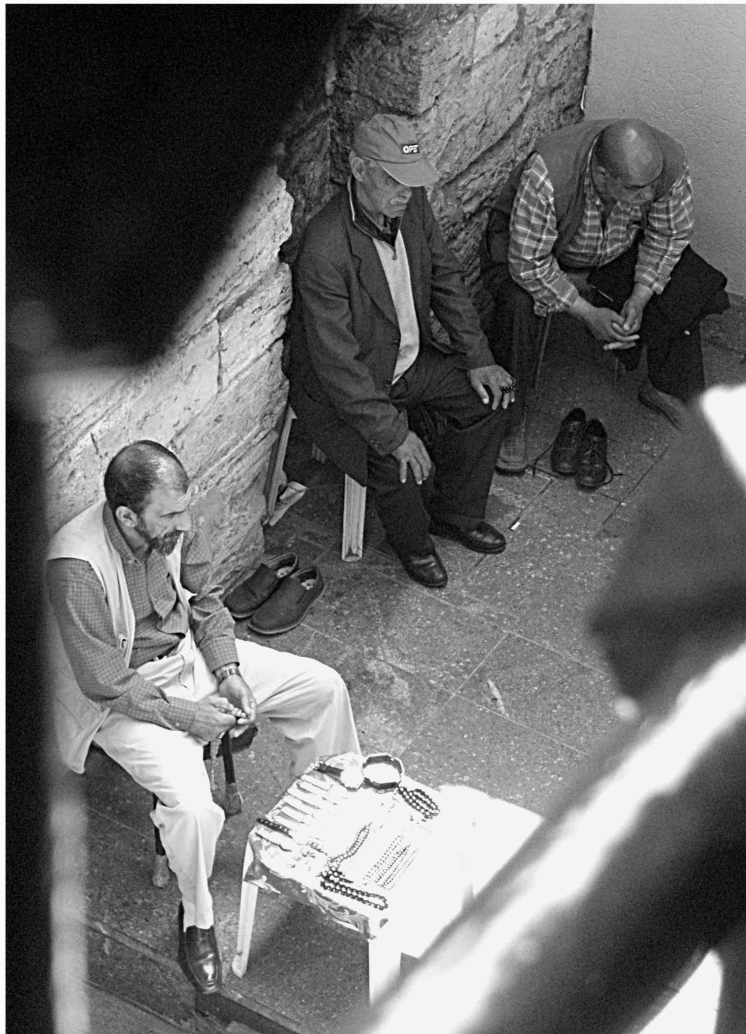
Mosquée Rüstem Pacha

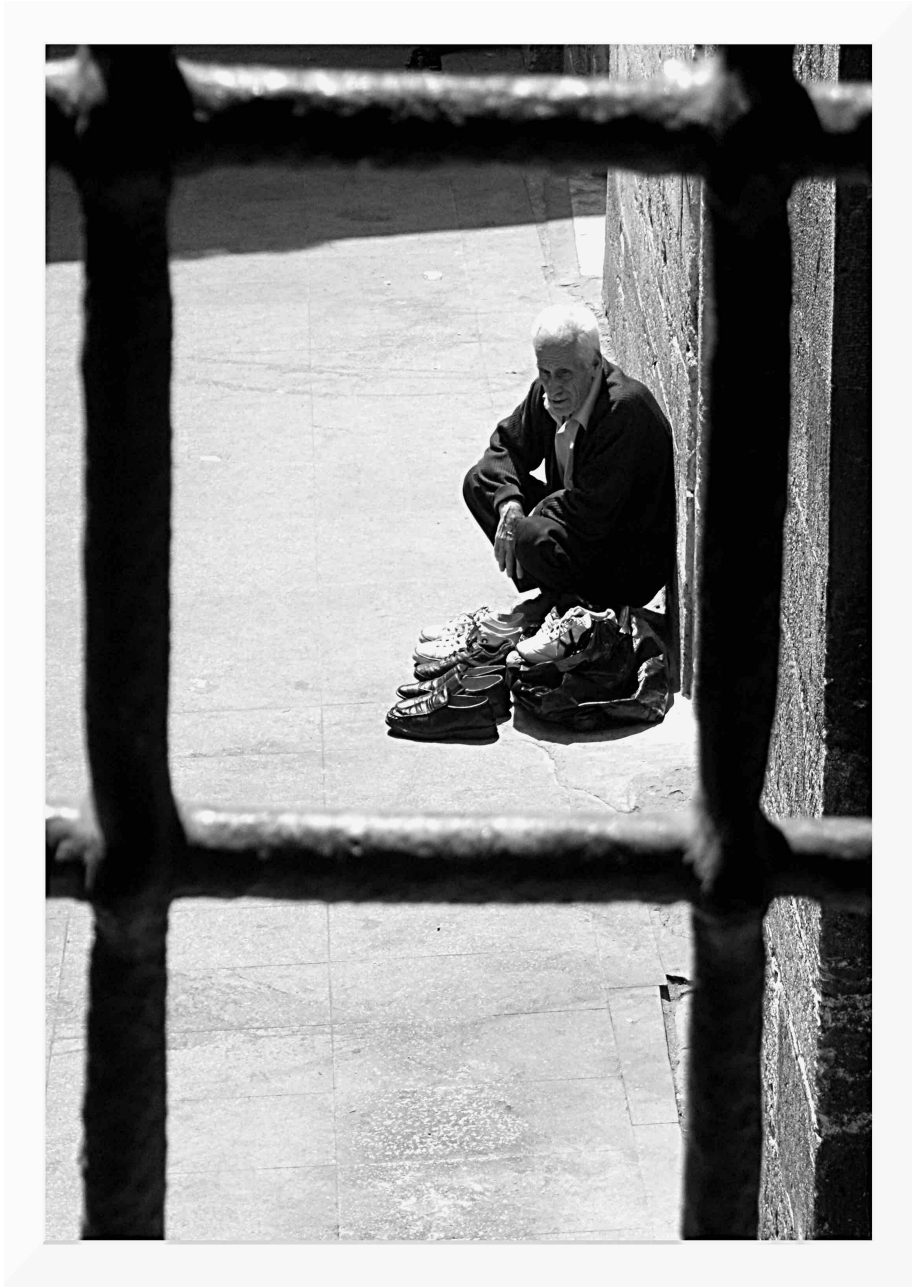


Faïence d'Iznik

En contrebas, dans les ruelles du vieux caravanseraïl







Yerebatan Sernici





Sultanahmet



Galata Kulesi, vue d'Eminonu



Uskudar



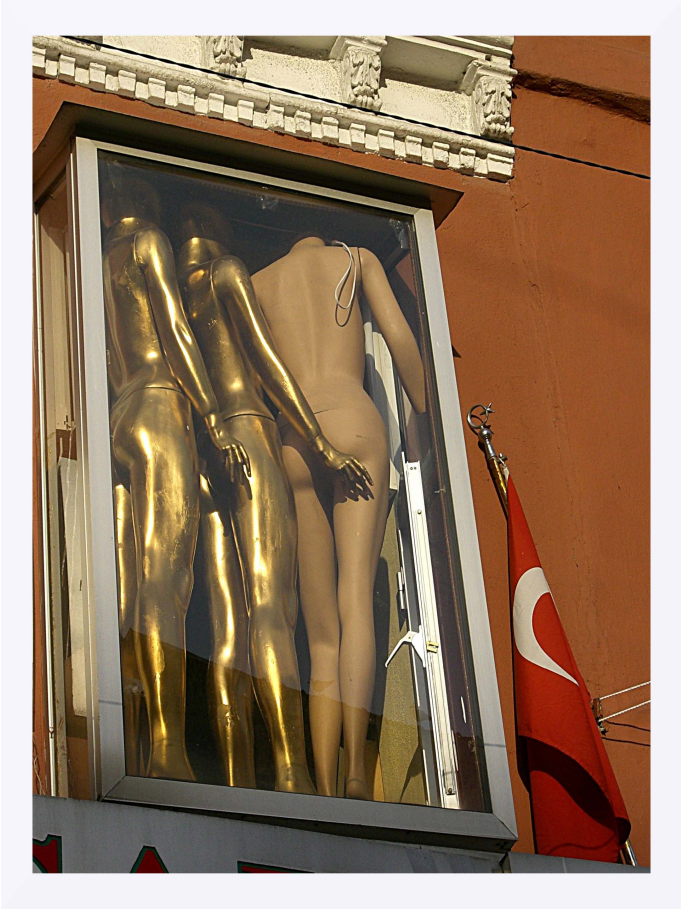




Le Bazar et ses mannequins











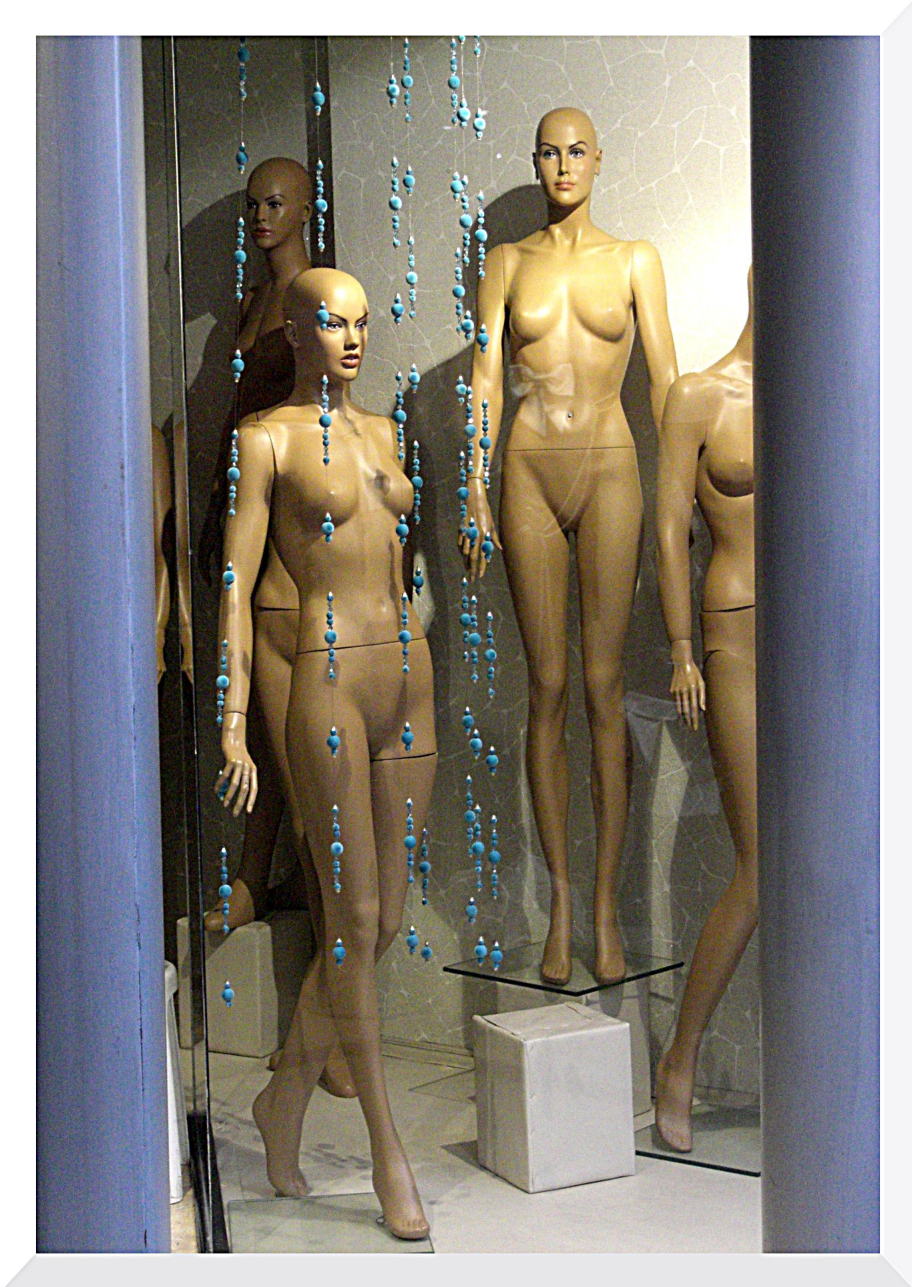














Ortakoy



Un pan de mur, sur la mer de Marmara

