

Geometry and braiding of Stokes data; Fission and wild character varieties

By P. P. BOALCH

To Robbie

Abstract

A family of new algebraic Poisson varieties will be constructed, generalising the complex character varieties of Riemann surfaces. Then the well-known (Poisson) mapping class group actions on the character varieties will be generalised.

Contents

1. Introduction	1
2. Quasi-Hamiltonian geometry	7
3. Higher fission spaces	12
4. Derivation of $\mathcal{B}(V, W)$	20
5. Basic properties	22
6. Further properties	26
7. Stokes data for complex reductive groups	31
8. Irregular curves and associated Betti spaces	39
9. Stability of Stokes representations	43
10. Admissible deformations of irregular curves	51
Appendix A. Stokes data from connections	55
Appendix B. Stokes groups are groups	59
References	60

1. Introduction

Given a Riemann surface $\widehat{\Sigma}$ (with boundary), many people have studied moduli spaces

$$(1) \quad \text{Hom}(\pi_1(\widehat{\Sigma}), G)/G$$

of representations of the fundamental group of $\widehat{\Sigma}$ in a Lie group G , the *character varieties* (cf. [58]). If G is a complex reductive group with a chosen symmetric nondegenerate invariant bilinear form on its Lie algebra, then (1) has an algebraic Poisson structure and the symplectic leaves are given by fixing the conjugacy classes around each component of the boundary. This provides a large class of holomorphic symplectic manifolds, which often have complete hyperkähler metrics (and are then diffeomorphic to certain moduli spaces of meromorphic Higgs bundles [37], [59], [52]).

Perhaps the best explanation as to *why* such spaces of fundamental group representations with fixed conjugacy classes have holomorphic symplectic structures is because they arise as symplectic quotients of the infinite-dimensional affine space of all C^∞ connections on a fixed G -bundle on $\widehat{\Sigma}$. (This is the extension to surfaces with boundary, involving loop groups, of the complexification of the viewpoint of Atiyah–Bott [4] described e.g. in [5].) Goldman [35] explained how this may also be understood in terms of the cup product in group cohomology.

The quasi-Hamiltonian approach [3] yields an alternative, algebraic construction of such symplectic manifolds as finite-dimensional “multiplicative” symplectic quotients of a smooth affine variety, as follows. Suppose $\widehat{\Sigma}$ has $m \geq 1$ boundary circles ∂_i , and choose a basepoint $b_i \in \partial_i$ in each component. Let Π denote the fundamental groupoid of $\widehat{\Sigma}$ with basepoints $\{b_1, \dots, b_m\}$. Then the space

$$\mathrm{Hom}(\Pi, G)$$

of homomorphisms from the groupoid Π to the group G is a smooth affine variety that naturally has the structure of quasi-Hamiltonian G^m -space and so, in particular, has an action of G^m and a group valued moment map

$$\mu : \mathrm{Hom}(\Pi, G) \rightarrow G^m.$$

The quotient $\mathrm{Hom}(\Pi, G)/G^m$ then inherits a Poisson structure and is isomorphic to (1). Alternatively, if $\mathcal{C} = (\mathcal{C}_1, \dots, \mathcal{C}_m) \subset G^m$ is a conjugacy class (i.e. the choice of a conjugacy class $\mathcal{C}_i \subset G$ for each boundary component), then the quasi-Hamiltonian reduction (the multiplicative symplectic quotient)

$$\mu^{-1}(\mathcal{C})/G^m$$

inherits a holomorphic symplectic structure (where it is a manifold) and is isomorphic to a symplectic leaf of (1).

The first aim of this article is to give a similar algebraic approach to more general spaces of monodromy-type data classifying irregular meromorphic connections on bundles on Riemann surfaces, thereby constructing many new algebraic symplectic manifolds generalising the character varieties. Secondly we will consider varying the initial data, leading to the braiding of the title,

generalising the much-studied mapping class group actions on the character varieties.

To see the natural generalisation to the irregular case, recall first the relation between the above spaces and regular singular connections. For this one starts with a smooth compact complex algebraic curve Σ with m distinct marked points $\mathbf{a} = (a_1, \dots, a_m)$ and defines $\Sigma^\circ = \Sigma \setminus \{a_i\}$ to be the corresponding punctured curve. Then, if $G = \mathrm{GL}_n(\mathbb{C})$, Deligne’s Riemann–Hilbert correspondence [29] implies that the G orbits in $\mathrm{Hom}(\pi_1(\Sigma^\circ), G)$ correspond bijectively to isomorphism classes of connections on rank n algebraic vector bundles on Σ° with regular singularities at each point a_i , and a similar statement holds for other groups G . The condition of regular singularities means that the bundles have extensions across the punctures for which the connections have only simple poles (and local horizontal sections have at most polynomial growth as they approach the singularities). Thus one sees a large class of generalisations may be obtained by relaxing this regularity assumption (and this still leads to hyperkähler manifolds [10], which again are often complete). The irregular Riemann–Hilbert correspondence (on curves with $G = \mathrm{GL}_n(\mathbb{C})$) was worked out several decades ago (see [50]) but is not as well known as its regular singular cousin. In brief the fundamental group representation is enriched by adding “Stokes data” at each singularity, and there are various ways of thinking about this extra data; for instance as elements of a certain non-abelian cohomology space (Malgrange–Sibuya, cf. [6]) or sheaf-theoretically (Deligne [30]), yielding an equivalence of categories. The approach used here is closer to that of Martinet–Ramis [51], describing the Stokes data as elements of certain unipotent subgroups of G (in turn using Ecalle’s work on multisummation); this viewpoint has the benefit of being as explicit as possible and amounts to having preferred cocycles representing each of the Malgrange–Sibuya cohomology classes ([46]). The exact groupoid approach we use looks to be new however. It is also useful when we vary the initial data.

1.1. *Statement of main results.* Fix a connected complex reductive group G and a maximal torus $T \subset G$ with Lie algebras $\mathfrak{t} \subset \mathfrak{g}$. It is convenient to define an “irregular curve” to be a smooth curve Σ with marked points \mathbf{a} as above together with the extra data of an “irregular type” Q_i at each marked point: if z is a local coordinate on Σ vanishing at a_i , then

$$Q_i = \frac{A_{r_i}}{z^{r_i}} + \dots + \frac{A_1}{z}$$

for some elements $A_i \in \mathfrak{t}$. Given an irregular curve we will consider monodromy/Stokes data of connections on G -bundles that are locally isomorphic to

$$dQ_i + \text{less singular terms}$$

at each a_i , so that fundamental solutions involve essentially singular terms of the form $\exp(Q_i)$ near a_i . (It is known that any meromorphic connection takes the above form after passing to a finite cover.)

Then consider the real two-manifold with boundary

$$\widehat{\Sigma} \rightarrow \Sigma$$

obtained by taking the real oriented blow-up of Σ at each marked point, thus replacing each point a_i with a circle ∂_i . The basic facts (see [Definitions 7.2](#) and [7.4](#)) then are that Q_i determines:

- (1) a connected complex reductive group $H_i \subset G$, the stabiliser of Q_i ,
- (2) a finite set $\mathbb{A}_i \subset \partial_i$ of singular directions at a_i ,

and for each singular direction $d \in \mathbb{A}_i$

- (3) a unipotent group $\text{Sto}_d(Q_i) \subset G$, normalised by H_i .

Then we puncture $\widehat{\Sigma}$ once in its interior along each singular direction (sufficiently near the corresponding boundary component) and let $\widetilde{\Sigma} \subset \widehat{\Sigma}$ denote the resulting punctured surface. Choose a basepoint $b_i \in \partial_i$ in each boundary component and now let Π denote the fundamental groupoid of $\widetilde{\Sigma}$ with basepoints $\{b_1, \dots, b_m\}$. (If each irregular type Q_i is zero, there are no singular directions and we are in the original regular singular situation.) Then consider the subset of *Stokes representations*

$$\text{Hom}_{\mathbb{S}}(\Pi, G) \subset \text{Hom}(\Pi, G)$$

consisting of homomorphisms ρ from Π to G that satisfy the following two conditions:

- (1) ρ takes the loop ∂_i based at b_i into the group H_i , and
- (2) for each singular direction $d \in \mathbb{A}_i$, ρ takes the small loop based at b_i that goes around ∂_i until direction d before encircling the puncture in the direction d and then retracing its path to b_i , to the group Sto_d .

Let $\mathbf{H} = H_1 \times \dots \times H_m \subset G^m$. The main result is then:

THEOREM 1.1. *The space $\text{Hom}_{\mathbb{S}}(\Pi, G)$ of Stokes representations is both a smooth affine variety and a quasi-Hamiltonian \mathbf{H} -space.*

This implies that the quotient $\text{Hom}_{\mathbb{S}}(\Pi, G)/\mathbf{H}$, which classifies meromorphic connections with the given irregular types, inherits a Poisson structure, and its symplectic leaves are obtained by fixing a conjugacy class $\mathcal{C}_i \subset H_i$ for each $i = 1, \dots, m$. We will also characterise the stable points of $\text{Hom}_{\mathbb{S}}(\Pi, G)$ in the sense of geometric invariant theory (for the action of \mathbf{H}), show there are lots of examples when the quotients are well behaved and describe the irregular analogue of the Deligne–Simpson problem.

Such Poisson structures may be obtained analytically from an irregular analogue of the Atiyah–Bott approach (as in [12], [10]), and the quasi-Hamiltonian approach was worked out previously in [15] in the case when the most singular coefficient of each irregular type was regular (off of all the root hyperplanes). The spaces of Stokes data are much more complicated when this assumption is removed, and the main work of the present article is to develop an inductive approach to build (quasi-Hamiltonian) spaces of Stokes data out of simpler pieces. This fits in well with the quasi-Hamiltonian philosophy of building moduli spaces of flat connections from simple pieces and with the idea of the factorisation theorem of Ramis [53]; in effect we construct some new building blocks (higher fission spaces, Section 3) and show that the spaces of Stokes representations may be built out of these using the quasi-Hamiltonian fusion and reduction operations. That one can do such an induction at the quasi-Hamiltonian level is perhaps the main discovery of this article.¹ Surprisingly it follows immediately that our building blocks may be used to construct many other holomorphic symplectic manifolds, beyond the quotients of the spaces of Stokes representations. For example, one may glue various surfaces Σ along their boundaries provided the groups H_i match up. Also one may obtain Van den Bergh’s quasi-Hamiltonian spaces [63], [64] from the higher fission spaces and thus all of the so-called multiplicative quiver varieties.

1.2. *Varying the initial data.* In brief the above result implies that a Poisson variety $\text{Hom}_{\mathbb{S}}(\Pi, G)/\mathbf{H}$ is determined by the choice of an irregular curve. For the second main result, in Section 10 we will define the notion of an “admissible family” of irregular curves over a base \mathbb{B} , generalising the notion of deforming a smooth curve with marked points such that the curve remains smooth and none of the points coalesce. Then we will show (Theorem 10.2) that the corresponding family of Poisson varieties assemble into a “local system of Poisson varieties” over \mathbb{B} , i.e. into a nonlinear fibration with a flat (Ehresmann) connection that integrates along any path in the base to yield algebraic Poisson isomorphisms between fibres. This leads to an algebraic Poisson action of the fundamental group of \mathbb{B} on any fibre $\text{Hom}_{\mathbb{S}}(\Pi, G)/\mathbf{H}$. Such deformations have been considered briefly by Witten [66, §6] in relation to geometric Langlands and $\mathcal{N} = 4$ super Yang–Mills theory. Mathematically these flat nonlinear connections should be viewed as the irregular analogue of the Gauss–Manin connection on non-abelian cohomology ([12, §7]).

Basic examples of admissible deformations in the irregular case were considered by Jimbo et al. [39]; they looked at the case $G = \text{GL}_n(\mathbb{C})$ when the

¹[18] discussed the possibility of “fusion on the other side of the analytic halo”—in effect, here we do fusion *within* the analytic halo.

most singular coefficient at each pole had distinct eigenvalues. This was extended to other reductive groups in [13] (keeping the most singular coefficient at each pole off all the root hyperplanes), and it was shown that in the simplest case the resulting Poisson action of the G -braid group coincides with the quasi-classical limit of the quantum-Weyl group action of Lusztig, Soibelman, Kirillov–Reshetikhin.² One impetus (cf. [11], [12]) for this line of thinking came from trying to understand the Poisson braid group actions in Dubrovin’s work on semisimple Frobenius manifolds, related to the Markoff polynomial in the three-dimensional case ([32, p. 243])—see also [26], [38], [62], [22], [68]. More generally, in the integrable systems literature interest in symplectic structures on spaces of Stokes data goes back at least to Flaschka–Newell [33]; the more recent work of Woodhouse [67] and Krichever [45] also computed such symplectic forms explicitly (in the $\mathrm{GL}_n(\mathbb{C})$ case with distinct leading eigenvalues), and our more general formulae were found similarly. The quasi-Hamiltonian approach here yields an algebraic proof that such two-forms are indeed symplectic, and in the general linear case, a quite simple proof that for generic parameters the wild character varieties are smooth symplectic algebraic varieties (see Corollary 9.9). This last result alone probably justifies the quasi-Hamiltonian approach and was one of our main aims.

Note that if for example one is interested in complete hyperkähler manifolds, it makes little sense to restrict attention to the regular singular case: there are many examples of isomorphisms between the moduli spaces that arise in the irregular case and the regular singular case (some examples appear in [61], and in such cases the hyperkähler metrics match up), but it is not true that all irregular cases are isomorphic to a regular singular case—on the contrary it seems that if one counts in each dimension the number of deformation classes of complete hyperkähler manifolds arising from Hitchin’s self-duality equations, then most classes only have irregular representatives.

The layout of this article is as follows. Sections 2–6 are basically pure quasi-Hamiltonian geometry, first giving the background definitions, then directly establishing the new spaces we will need, then establishing many properties of them. Section 7 defines the spaces of Stokes data corresponding to connections on a disc and shows that, with suitable framings, they are quasi-Hamiltonian. This is used in Section 8 to prove that the space of Stokes/monodromy data attached to a (global) irregular curve is indeed an algebraic Poisson variety. Section 9 discusses various aspects of stability (one

²This quasi-classical limit, an action of the G -braid group on the dual Poisson Lie group, was explicitly computed by De Concini–Kac–Procesi [28]. A key point of the geometrical approach is the identification [11], [13] of a simple space of Stokes data with the Poisson Lie group dual to G .

related to differential Galois theory), defines the irregular Deligne–Simpson problem and gives many examples when the quotients are well behaved. Finally, [Section 10](#) considers admissible families of irregular curves and shows that the corresponding family of Poisson varieties fit together into a Poisson local system. It also mentions the link to Baker functions and integrable hierarchies. (Some aspects of the irregular Riemann–Hilbert correspondence are discussed in [Appendix A](#) to help motivate the basic definitions.) Note that we have focused on the new features that occur in the present context, and some of the results from [\[12\]](#), [\[13\]](#), [\[15\]](#) whose generalisation is routine have been omitted.

Acknowledgments. This work was partially supported by ANR grants 08-BLAN-0317-01/02 (SEDIGA) and 09-JCJC-0102-01 (RepRed). The author is grateful to the referee for several very helpful suggestions.

2. Quasi-Hamiltonian geometry

Some familiarity with the quasi-Hamiltonian theory of Alekseev–Malkin–Meinrenken [\[3\]](#) will be assumed. This section will recall (the holomorphic analogue of) the basic results. In essence this theory is a multiplicative version of the usual Hamiltonian theory, with moment maps taking values in Lie groups rather than the dual of the Lie algebra. The axioms for the analogue of the symplectic form and its interaction with the group action and the moment map are more complicated. The upshot is a direct and explicit algebraic approach to constructing certain quite exotic symplectic manifolds, previously constructed via infinite-dimensional techniques. The motivation in [\[3\]](#) was to give a finite-dimensional algebraic construction of the symplectic structure on moduli spaces of flat connections on bundles over Riemann surfaces with fixed local monodromy conjugacy classes. We have found this theory is also useful to construct new moduli spaces.

2.1. Notation. Let G be a connected complex reductive group³ with Lie algebra \mathfrak{g} . (The group $G(\mathbb{C})$ of \mathbb{C} points will often also be denoted by G .) Suppose we have chosen a symmetric nondegenerate invariant bilinear form $(\ , \) : \mathfrak{g} \otimes \mathfrak{g} \rightarrow \mathbb{C}$. (This choice will be tacitly assumed throughout.) The Maurer–Cartan forms on G are denoted $\theta, \bar{\theta} \in \Omega^1(G, \mathfrak{g})$ respectively (so in any representation, $\theta = g^{-1}dg, \bar{\theta} = (dg)g^{-1}$). Generally if $\mathcal{A}, \mathcal{B}, \mathcal{C} \in \Omega^1(M, \mathfrak{g})$ are \mathfrak{g} -valued holomorphic one-forms on a complex manifold M , then $(\mathcal{A}, \mathcal{B}) \in$

³The main results are new even for $G = \mathrm{GL}_n(\mathbb{C})$ so the reader could restrict to that case, but one gets a richer class of braid group actions in general. (See the examples in [Section 10.1](#) and [\[13\]](#), which motivated us to define G -valued Stokes multipliers.)

$\Omega^2(M)$ and $[\mathcal{A}, \mathcal{B}] \in \Omega^2(M, \mathfrak{g})$ are defined by wedging the form parts and pairing/bracketing the Lie algebra parts. Define $\mathcal{A}^2 := \frac{1}{2}[\mathcal{A}, \mathcal{A}] \in \Omega^2(M, \mathfrak{g})$ (which works out correctly in any representation of G using matrix multiplication). Then one has $d\theta = -\theta^2$, $d\bar{\theta} = \bar{\theta}^2$. Define $(\mathcal{A}\mathcal{B}\mathcal{C}) = (\mathcal{A}, [\mathcal{B}, \mathcal{C}])/2 \in \Omega^3(M)$ (which is invariant under all permutations of $\mathcal{A}, \mathcal{B}, \mathcal{C}$). The canonical bi-invariant three-form on G is then $\frac{1}{6}(\theta^3)$. The adjoint action of G on \mathfrak{g} will be denoted $gXg^{-1} := \text{Ad}_g X$ for any $X \in \mathfrak{g}, g \in G$. If G acts on M , the fundamental vector field v_X of $X \in \mathfrak{g}$ is minus the tangent to the flow $(v_X)_m = -\frac{d}{dt}(e^{-Xt} \cdot m)\Big|_{t=0}$ so that the map $\mathfrak{g} \rightarrow \text{Vect}_M; X \rightarrow v_X$ is a Lie algebra homomorphism. (This sign convention differs from [3] leading to sign changes in the quasi-Hamiltonian axioms and the fusion and equivalence theorems.)

Recall that a complex manifold M is a *complex quasi-Hamiltonian G -space* if there is an action of G on M , a G -equivariant map $\mu : M \rightarrow G$ (where G acts on itself by conjugation) and a G -invariant holomorphic two-form $\omega \in \Omega^2(M)$ such that

(QH1) The exterior derivative of ω is the pullback along the moment map of the canonical three-form on G : $d\omega = \mu^*(\theta^3)/6$.

(QH2) For all $X \in \mathfrak{g}$, $\omega(v_X, \cdot) = \frac{1}{2}\mu^*(\theta + \bar{\theta}, X) \in \Omega^1(M)$.

(QH3) At each point $m \in M$: $\text{Ker } \omega_m \cap \text{Ker } d\mu = \{0\} \subset T_m M$.

It is possible to show that if (QH1) and (QH2) hold, then (QH3) is equivalent to the condition

$$\text{Ker}(\omega_m) = \left\{ (v_X)_m \mid X \in \mathfrak{g} \text{ satisfies } \text{Ad}_g X = -X \text{ where } g := \mu(m) \right\}$$

(cf. [1] Remark 5.3).

Remark 2.1. Observe that if G is abelian (and in particular if $G = \{1\}$ is trivial), then these axioms imply that the two-form ω is a complex symplectic form. The reduction procedure (see below) yields many symplectic manifolds in this way.

Example 2.2 (Conjugacy classes [3]). Let $\mathcal{C} \subset G$ be a conjugacy class, with the conjugation action of G and moment map μ given by the inclusion map. Then \mathcal{C} is a quasi-Hamiltonian G -space with two-form ω determined by

$$\omega_g(v_X, v_Y) = \frac{1}{2}((X, gYg^{-1}) - (Y, gXg^{-1}))$$

for any $X, Y \in \mathfrak{g}, g \in \mathcal{C}$.

Other basic examples of quasi-Hamiltonian spaces appear as moduli spaces of holomorphic connections on Riemann surfaces with boundary, with a framing at one point on each boundary component. (If one instead chooses a framing on all of the boundary, then one obtains an infinite dimension symplectic

manifold with a Hamiltonian loop group action changing the framing—one way to understand the quasi-Hamiltonian axioms is via the way in which such loop group spaces yield finite-dimensional quasi-Hamiltonian spaces in [3, §8], by forgetting the framing at all but one point on each component the boundary.) For example, the annulus has two boundary components so corresponds naturally to a quasi-Hamiltonian $G \times G$ -space, which may be written explicitly as follows.

Example 2.3 (The double [3]). The space $\mathbf{D} = G \times G$ is a quasi-Hamiltonian $G \times G$ -space with $(g, k) \in G \times G$ acting as $(g, k)(C, h) = (kCg^{-1}, khk^{-1})$, with moment map

$$\mu(C, h) = (C^{-1}hC, h^{-1}) \in G \times G$$

and with two-form ω such that

$$(2) \quad 2\omega = (\bar{\gamma}, \text{Ad}_h \bar{\gamma}) + (\bar{\gamma}, \bar{\eta} + \eta),$$

where $\bar{\gamma} = C^*(\bar{\theta})$, $\eta = h^*(\theta)$ and $\bar{\eta} = h^*(\bar{\theta})$.

The notation $C^*(\bar{\theta})$ here means that we view C as a map from \mathbf{D} to G and pull back the right-invariant Maurer-Cartan form $\bar{\theta}$ to obtain a \mathfrak{g} -valued one-form on \mathbf{D} . Similarly the one-holed torus leads to the following space. (The name will be explained below.)

Example 2.4 (Internally fused double [3]). The space $\mathbb{D} = G \times G$ is a quasi-Hamiltonian G -space with G acting by diagonal conjugation ($g(a, b) = (gag^{-1}, gbg^{-1})$), moment map given by the group commutator

$$\mu(a, b) = aba^{-1}b^{-1}$$

and two-form

$$\omega_{\mathbb{D}} = -\frac{1}{2}(a^*\theta, b^*\bar{\theta}) - \frac{1}{2}(a^*\bar{\theta}, b^*\theta) - \frac{1}{2}((ab)^*\theta, (a^{-1}b^{-1})^*\bar{\theta}).$$

These are both special cases of the following result. Let Σ be a compact connected Riemann surface with boundary. Let g be the genus of Σ and let m be the number of boundary components. (We assume $m \geq 1$.) Choose a basepoint b_i on the i th boundary component for each $i = 1, \dots, m$. Let

$$\Pi = \Pi_1(\Sigma, \{b_1, \dots, b_m\})$$

be the fundamental groupoid of Σ with basepoints $\{b_i\}$, i.e. the groupoid of homotopy classes of paths in Σ whose endpoints are in the set of chosen basepoints.

THEOREM 2.5. *The space $\text{Hom}(\Pi, G)$ of homomorphisms from the groupoid Π to the group G is a smooth quasi-Hamiltonian G^m -space.*

Proof. This is just a slightly more intrinsic restatement of [3, Th. 9.1]. Choosing suitable paths generating Π identifies $\text{Hom}(\Pi, G)$ with $G^{2(g+m-1)}$ and in turn with the reduction of the fusion product (see below) $\mathbb{D}^{\otimes g} \otimes \mathbf{D}^{\otimes m}$ by the diagonal action of G at the identity value of the moment map. Then one can check that the result is independent of the chosen generating paths. \square

If Σ is disconnected (and each component has at least one boundary component), then the same result holds, taking the product of the quasi-Hamiltonian spaces attached to each connected component.

2.2. Operations. The fusion product, which puts a ring structure on the category of quasi-Hamiltonian G -spaces, is defined as follows.

THEOREM 2.6 ([3]). *Let M be a quasi-Hamiltonian $G \times G \times H$ -space, with moment map $\mu = (\mu_1, \mu_2, \mu_3)$. Let $G \times H$ act by the diagonal embedding $(g, h) \rightarrow (g, g, h)$. Then M , with two-form*

$$(3) \quad \tilde{\omega} = \omega - \frac{1}{2}(\mu_1^* \theta, \mu_2^* \bar{\theta})$$

and moment map

$$\tilde{\mu} = (\mu_1 \cdot \mu_2, \mu_3) : M \rightarrow G \times H,$$

is a quasi-Hamiltonian $G \times H$ -space.

We will refer to the extra term subtracted off in (3) as the “fusion term”. If M_i is a quasi-Hamiltonian $G \times H_i$ space for $i = 1, 2$, their fusion product

$$M_1 \otimes M_2$$

is defined to be the quasi-Hamiltonian $G \times H_1 \times H_2$ -space obtained from the quasi-Hamiltonian $G \times G \times H_1 \times H_2$ -space $M_1 \times M_2$ by fusing the two factors of G .

This is set up so that it corresponds to gluing two boundary components into two of the holes of a three-holed sphere. More precisely, suppose Σ_1 is a (possibly disconnected) surface with boundary. We choose two distinct boundary components and construct a new surface Σ_2 by gluing the two chosen boundary components of Σ_1 into two of the holes of a three-holed sphere. Let M_i be the quasi-Hamiltonian space attached to Σ_i via [Theorem 2.5](#) (repeating for each connected component if necessary) for $i = 1, 2$. Then M_2 is isomorphic to the space obtained by fusing the two G factors of M_1 corresponding to the two chosen boundary components. (For example, if Σ_1 is the annulus, this explains the name “internally fused double”.)

Now let us recall the quasi-Hamiltonian reduction theorem:

THEOREM 2.7 ([3]). *Let M be a quasi-Hamiltonian $G \times H$ -space with moment map $(\mu, \mu_H) : M \rightarrow G \times H$, and suppose that the quotient by G of the*

inverse image $\mu^{-1}(1)$ of the identity under the first moment map is a manifold. Then the restriction of the two-form ω to $\mu^{-1}(1)$ descends to the reduced space

$$(4) \quad M//G := \mu^{-1}(1)/G$$

and makes it into a quasi-Hamiltonian H -space. In particular, if H is abelian (or in particular trivial), then $M//G$ is a complex symplectic manifold.

Next we recall that the quotient of a quasi-Hamiltonian G -space by G is Poisson. This result will be used in the following form.

PROPOSITION 2.8. *Suppose M is a smooth affine variety with the structure of quasi-Hamiltonian G -space. Then the (geometric invariant theory) quotient M/G is a Poisson variety.*

Proof. It is well known ([3, 4.6]) that the ring of G -invariant functions on M is a Poisson algebra (see also [2, §6], [1, §5.4]). But by definition the geometric invariant theory quotient is the affine variety associated to the ring of G -invariant functions on M , and so is Poisson. \square

Note that the points of the geometric invariant theory quotient correspond bijectively to the *closed* G -orbits in M and so, in general, it is different from the set-theoretic quotient. Alternatively one may view the points of the geometric invariant theory quotient as parametrising the quotient of M by a stronger equivalence relation than orbit equivalence (S-equivalence): two points of M are S-equivalent if their orbit closures intersect. (One may also consider other geometric invariant theory quotients, by using a nontrivial linearisation, but we will ignore these here for brevity.) Note that unless otherwise stated M/G will denote the geometric invariant theory quotient, and $M//G$ will denote the complex quasi-Hamiltonian quotient (4) (i.e. the geometric invariant theory quotient of the subvariety $\mu^{-1}(1) \subset M$).

2.3. Gluing $M \varepsilon\text{-}3 N$. It is convenient to formalise the (well-known) notion of gluing quasi-Hamiltonian spaces as follows. Given a quasi-Hamiltonian $G \times G \times H$ -space M , we may fuse the two G factors to obtain a quasi-Hamiltonian $G \times H$ space. Then, if the quotient is well defined, we may reduce by the G factor (at the identity of G) to obtain a quasi-Hamiltonian H -space, the *gluing* of the two G -factors. Thus for example if M_i is a quasi-Hamiltonian $G \times H_i$ -space for $i = 1, 2$, then M_1 and M_2 may be glued to obtain a quasi-Hamiltonian $H_1 \times H_2$ space (if it is a manifold) by gluing their product:

$$M_1 \underset{G}{\varepsilon\text{-}3} M_2 := (M_1 \underset{G}{\otimes} M_2)//G.$$

If the factors being glued are clear from the context, this will be abbreviated to $M_1 \varepsilon\text{-}3 M_2$. In most of the cases we will consider the G -action will be free with a global slice so there is no problem performing the gluing. Note that

whereas fusion is only commutative up to isomorphism, the gluing operation is actually commutative (when it is defined).

2.4. *Van den Bergh's quasi-Hamiltonian spaces* $\mathcal{B}(V, W)$. Choose two finite-dimensional complex vector spaces V, W , and define

$$(5) \quad \mathcal{B}(V, W) = \{(a, b) \in \text{Hom}(W, V) \oplus \text{Hom}(V, W) \mid \det(1 + ab) \neq 0\}.$$

The automorphism groups $\text{GL}(V)$ and $\text{GL}(W)$ of V and W naturally induce an action of $\text{GL}(V) \times \text{GL}(W)$ on $\mathcal{B}(V, W)$.

THEOREM 2.9. ([63], [64], [69]) *$\mathcal{B}(V, W)$ is a quasi-Hamiltonian $\text{GL}(V) \times \text{GL}(W)$ -space. The moment map is*

$$(6) \quad (a, b) \mapsto ((1 + ab)^{-1}, 1 + ba) \in \text{GL}(V) \times \text{GL}(W),$$

and the two-form is

$$(7) \quad \omega = \frac{1}{2} (\text{Tr}_V(1 + ab)^{-1} da \wedge db - \text{Tr}_W(1 + ba)^{-1} db \wedge da).$$

An alternative proof will follow from [Theorems 3.1 and 4.2](#) below. Henceforth the notation “ $(a, b) \in \mathcal{B}(V, W)$ ” will always mean $a \in \text{Hom}(W, V)$ and $b \in \text{Hom}(V, W)$ with $1 + ab$ invertible, analogously to the convention that $(p, q) \in T^* \text{Hom}(V, W)$ means $q \in \text{Hom}(V, W)$ and $p \in \text{Hom}(W, V) = \text{Hom}(V, W)^*$. Note that such spaces (without the quasi-Hamiltonian structure) are familiar from the explicit description of the local classification of regular holonomic \mathcal{D} -modules on a curve (see e.g. [\[24\]](#), [\[48\]](#), [\[50\]](#)).

3. Higher fission spaces

In this section we will describe some new algebraic quasi-Hamiltonian spaces. Later it will be explained how these spaces arise from considering the explicit local classification (in terms of Stokes data) of some simple irregular connections on curves and how they may be glued together to construct some much more complicated spaces of Stokes data classifying irregular meromorphic connections on curves.

Let G be a connected complex reductive group, and choose a parabolic subgroup $P_+ \subset G$ and a Levi subgroup $H \subset P_+$. Let $P_- \subset G$ be the (unique) opposite parabolic with Levi subgroup $H \subset P_-$ so that $P_- P_+$ is dense in G (see e.g. [\[23, p. 199\]](#)). Let $U_\pm \subset P_\pm$ be the corresponding unipotent radicals. For example, if G is a general linear group so that $G = \text{GL}(V)$ for a finite-dimensional complex vector space V , then choosing a parabolic subgroup of G together with a Levi subgroup is equivalent to choosing an ordered grading

of V , i.e. to choosing a direct sum decomposition

$$V = \bigoplus_1^k V_i$$

for some integer $k \geq 1$. By convention we then take the subgroup $P_+ \subset G$ to be the subgroup stabilising the flag

$$F_1 \subset F_2 \subset \dots \subset F_k = V,$$

where $F_i = V_1 \oplus \dots \oplus V_i$, and $H = \prod \mathrm{GL}(V_i) \subset G$. Thus in an adapted basis U_+ is the subgroup of block upper triangular matrices with 1's on the diagonal and H is the block diagonal subgroup.

Now fix an integer $r \geq 1$ and define a space

$${}_G\mathcal{A}_H^r := G \times (U_+ \times U_-)^r \times H.$$

In the case $r = 1$ the superscript will be omitted so that ${}_G\mathcal{A}_H = {}_G\mathcal{A}_H^1$.

A point of ${}_G\mathcal{A}_H^r$ is given by specifying $C \in G, h \in H$ and $\mathbf{S} \in (U_+ \times U_-)^r$ with $\mathbf{S} = (S_1, \dots, S_{2r})$ where $S_{\text{even}} \in U_-$ and $S_{\text{odd}} \in U_+$. There is an action of $G \times H$ on ${}_G\mathcal{A}_H^r$ given by

$$(g, k)(C, \mathbf{S}, h) = (kCg^{-1}, k\mathbf{S}k^{-1}, khk^{-1}),$$

where $(g, k) \in G \times H$ and $k\mathbf{S}k^{-1} = (kS_1k^{-1}, \dots, kS_{2r}k^{-1})$.

Note that the only choices involved here are G, P_+ and the Levi subgroup H (i.e. a lifting to P_+ of the Levi factor $P_+/U_+ \cong H$). Sometimes it will be convenient to denote the same space also by ${}_H\mathcal{A}_G^r$. In the general linear case, an ordered graded vector space V thus determines a space ${}_G\mathcal{A}_H^r$ for each integer $r \geq 1$, and we will denote them by

$$\mathcal{A}^r(V_1, \dots, V_k) = {}_G\mathcal{A}_H^r,$$

or by $\mathcal{A}^r(V)$ if the choice of ordered grading of V is clear (and as before $\mathcal{A}(V) = \mathcal{A}^1(V)$).

The main result we will prove in this section is the following.

THEOREM 3.1. *Suppose G is a complex reductive group and $H \subset P_+ \subset G$ are chosen as above. Then ${}_G\mathcal{A}_H^r$ is a quasi-Hamiltonian $G \times H$ -space, with moment map*

$$\mu(C, \mathbf{S}, h) = (C^{-1}hS_{2r} \dots S_2S_1C, h^{-1}) \in G \times H.$$

In general, these spaces ${}_G\mathcal{A}_H^r$ will be referred to as “higher fission spaces” (enabling one to break the group from G to H).

Examples. (1) If $P_+ = G = H$, then ${}_G\mathcal{A}_H^r$ is the double $G \times G$ of [3].

(2) When P_+ is a Borel subgroup, so that H is a maximal torus, we may pass to a covering to obtain the spaces $\tilde{C} = G \times (U_+ \times U_-)^r \times \mathfrak{h}$ of [15], where $\mathfrak{h} = \text{Lie}(H)$.

(3) When $r = 1$ (and P_+ arbitrary), the spaces ${}_G\mathcal{A}_H^r$ specialise to the spaces ${}_G\mathcal{A}_H$ of [18]. They always have dimension $2 \dim(G)$ and (up to passing to a covering) interpolate between the double $G \times G$ (which appears when $H = G$) and $G \times G^*$, where G^* is the dual Poisson Lie group of G (which appears when H is a maximal torus).

(4) Next suppose $r = 2$. We perform the reduction by G of ${}_G\mathcal{A}_H^r$ at the value 1 of the moment map. The resulting space is

$$(8) \quad \left\{ (S_1, S_2, S_3, S_4, h) \in U_+ \times U_- \times U_+ \times U_- \times H \mid hS_4S_3S_2S_1 = 1 \right\}.$$

This inherits the structure of quasi-Hamiltonian H -space with moment map h^{-1} . (It is symplectic if H is a maximal torus as in [15]). By forgetting h, S_3, S_4 , this space (8) embeds as the (open) subset of $U_+ \times U_-$ consisting of pairs (S_1, S_2) such that $S_2S_1 \in P_+P_- \subset G$. In Theorem 4.2 we will establish the following statement:

If G is a general linear group and P_+ is a maximal proper parabolic subgroup, then the spaces (8) coincide with the Van den Bergh spaces (5).

One of the main features that appears in the general parabolic case is the possibility to glue such fission spaces end-to-end. If one does this for a decreasing sequence of nested Levi subgroups (and decreasing exponents r) then, as will be shown in Section 7, all the complicated spaces that arise in this way actually appear as spaces of (framed) Stokes data for meromorphic connections on curves.

Proof of Theorem 3.1. Define maps $C_i : {}_G\mathcal{A}_H^r \rightarrow G$ by

$$C_i = S_i \cdots S_2S_1C$$

so that $C = C_0$. Define $b = hS_{2r} \cdots S_2S_1 : {}_G\mathcal{A}_H^r \rightarrow G$ so that the G component of the moment map μ is $C^{-1}bC$. This enables us to define the following \mathfrak{g} -valued one-forms on ${}_G\mathcal{A}_H^r$:

$$\gamma_i = C_i^*(\theta), \quad \bar{\gamma}_i = C_i^*(\bar{\theta}), \quad \eta = h^*(\theta_H), \quad \bar{\beta} = b^*(\bar{\theta}),$$

where $\theta, \bar{\theta}$ are the Maurer–Cartan forms on G (and $\theta_H, \bar{\theta}_H$ are the Maurer–Cartan forms on H). We may then define a two-form ω on ${}_G\mathcal{A}_H^r$ by the formula

$$(9) \quad 2\omega = (\bar{\gamma}, \text{Ad}_b\bar{\gamma}) + (\bar{\gamma}, \bar{\beta}) + (\bar{\gamma}_m, \eta) - \sum_{i=1}^m (\gamma_i, \gamma_{i-1}),$$

where $m = 2r$ and $\bar{\gamma} = \bar{\gamma}_0$, and the brackets (\cdot, \cdot) denote the bilinear form on \mathfrak{g} . We will show ${}_G\mathcal{A}_H^r$ is a quasi-Hamiltonian $G \times H$ -space with this two-form. First, since we will use it often, note that the invariance of the bilinear form implies the pairing $(\cdot, \cdot) : \mathfrak{g} \otimes \mathfrak{g} \rightarrow \mathbb{C}$ restricts to zero on $\mathfrak{u}_\pm \otimes (\mathfrak{h} \oplus \mathfrak{u}_\pm)$ and is nondegenerate on $\mathfrak{h} \otimes \mathfrak{h}$, where $\mathfrak{h} = \text{Lie}(H)$, $\mathfrak{u}_\pm = \text{Lie}(U_\pm)$.

Proof of (QH1). To simplify the notation write $M = {}_G\mathcal{A}_H^r$ and $m = 2r$.

LEMMA 3.2. *Suppose $A, B, S : M \rightarrow G$ are maps such that $A = SB$ and S takes values in a fixed unipotent (isotropic) subgroup of G . Let $\alpha = A^*(\theta)$, $\beta = B^*(\theta)$. Then*

$$3d(\alpha, \beta) = (\beta^3) - (\alpha^3) \in \Omega^3(M, \mathfrak{g}).$$

Proof. Since $S = AB^{-1}$ the element $\sigma := S^*(\theta)$ is conjugate to $\alpha - \beta$ and so

$$0 = (\sigma^3) = (\alpha^3) - (\beta^3) + 3(\alpha\beta^2) - 3(\alpha^2\beta).$$

Then observe the Maurer–Cartan equations imply $d(\alpha, \beta) = -(\alpha^2\beta) + (\alpha\beta^2)$. \square

COROLLARY 3.3. $3 \sum_{i=1}^m d(\gamma_i, \gamma_{i-1}) = (\gamma^3) - (\gamma_m^3)$, where $\gamma = \gamma_0$.

Proof. Lemma 3.2 implies $3d(\gamma_i, \gamma_{i-1}) = (\gamma_{i-1}^3) - (\gamma_i^3)$, and so the sum collapses. \square

For the proof of (QH1), write $\mu = (\mu_G, \mu_H)$, where $\mu_G = C^{-1}bC$, $\mu_H = h^{-1}$. Then $\mu_G^*(\theta)$ is conjugate to $\beta + \bar{\gamma} - b^{-1}\bar{\gamma}b$ and a direct calculation shows

$$\mu_G^*(\theta^3) = (\beta^3) + 3(\bar{\gamma}\beta^2) + 3(\bar{\gamma}^2\beta) + 3d(\bar{\gamma}, \bar{\beta} + \text{Ad}_b\bar{\gamma}).$$

Thus from this and Corollary 3.3, showing $\mu^*(\theta^3) = 6d\omega$ reduces to verifying that

$$(\beta^3) + 3(\bar{\gamma}\beta^2) + 3(\bar{\gamma}^2\beta) - (\eta^3) = (\gamma_m^3) - (\gamma^3) + 3(\bar{\gamma}_m\eta^2) + 3(\bar{\gamma}_m^2\eta).$$

But, swapping the sides of (η^3) and (γ^3) , this amounts to showing $((\beta + \bar{\gamma})^3) = ((\eta + \bar{\gamma}_m)^3)$, and this is a simple consequence of the fact that (by definition) $bC = hC_m$.

Proof of (QH2). First, considering just the G action since $\mu_G = C^{-1}bC$ we have

$$(10) \quad \mu_G^*(\theta + \bar{\theta}) = C^{-1}(\beta + \bar{\beta})C + C^{-1}(b\bar{\gamma}b^{-1} - b^{-1}\bar{\gamma}b)C.$$

If $X \in \mathfrak{g}$ and we use primes to denote derivatives along the corresponding fundamental vector field v_X , then $\gamma' := \langle v_X, \gamma \rangle = X$, $\bar{\gamma}' = CXC^{-1}$, $\beta' = \eta' = 0$. This enables us to compute

$$2\omega(v_X, \cdot) = (X, \text{Ad}_{(C^{-1}b)}\bar{\gamma} - \text{Ad}_{(bC)}^{-1}\bar{\gamma} + \text{Ad}_C^{-1}\bar{\beta} + \text{Ad}_{C_m}^{-1}\eta + \gamma_m - \gamma).$$

Comparing with (10) we see this agrees with $(X, \mu_G^*(\theta + \bar{\theta}))$ provided the relation $\text{Ad}_{C_m}^{-1}\eta + \gamma_m - \gamma = C^{-1}\beta C$ holds—but this follows easily from the fact that $hC_m = bC$. Secondly, for the H action, since $\mu_H = h^{-1}$, we have

$$(11) \quad \mu_H^*(\theta + \bar{\theta}) = -\eta - \bar{\eta}.$$

Now if $X \in \mathfrak{h}$, then $\bar{\gamma}'_i = -X$, $\gamma'_i = -C_i^{-1}XC_i$ and $\bar{\beta}' = bXb^{-1} - X$, $\eta' = X - h^{-1}Xh$. This enables us to compute that $2\omega(v_X, \cdot) = (X, \alpha)$ where

$$\alpha := -\text{Ad}_b\bar{\gamma} - \bar{\beta} + \bar{\gamma} - \eta - \bar{\gamma}_m + \text{Ad}_h\bar{\gamma}_m + \sum_1^m \text{Ad}_{C_i}\gamma_{i-1} - \text{Ad}_{C_{i-1}}\gamma_i.$$

Now $\text{Ad}_{C_i}\gamma_{i-1} = \bar{\gamma}_i - \bar{\sigma}_i$ and $\text{Ad}_{C_{i-1}}\gamma_i = \bar{\gamma}_{i-1} + \sigma_i$ where $\sigma_i = S_i^*(\theta)$, so (since σ_i pairs to zero with $X \in \mathfrak{h}$) the summation in the expression for α may be simplified to $\sum_1^m \bar{\gamma}_i - \bar{\gamma}_{i-1} = \bar{\gamma}_m - \bar{\gamma}$, which cancels with other terms in α , yielding $2\omega(v_X, \cdot) = -(X, \text{Ad}_b\bar{\gamma} + \bar{\beta} + \eta - \text{Ad}_h\bar{\gamma}_m)$. In turn this equals $-(X, \eta + \bar{\eta})$ (as expected from (11)) since $h = bCC_m^{-1}$. This completes the proof of (QH2).

Proof of (QH3). Fix a point $p \in M$ and a vector $v \in \text{Ker}(\omega) \cap \text{Ker}(d\mu) \subset T_pM$. Thus our aim is to show that v is zero. If we let primes denote components along v , then $\eta' := \langle \eta, v \rangle = 0$ since $v \in \text{Ker} d\mu_H$. Similarly since $v \in \text{Ker} d\mu_G$, we have

$$(12) \quad \beta' = b^{-1}\bar{\gamma}'b - \bar{\gamma}'.$$

In order to use the condition that $v \in \text{Ker} \omega$, we note that ω may be expanded as follows. Write $[ij] = S_i S_{i-1} \cdots S_j$ for any $i \geq j$.

LEMMA 3.4.

$$2\omega = (\bar{\gamma}, \text{Ad}_b\bar{\gamma}) + (\bar{\gamma}, \bar{\eta}) + (\text{Ad}_{[m1]}\bar{\gamma}, \eta) \\ + \sum_{i=1}^m (\text{Ad}_{[mi]}\sigma_i, \eta) + (\bar{\gamma}, \text{Ad}_{h[mi]}\sigma_i) - (\bar{\sigma}_i, \text{Ad}_{[i1]}\bar{\gamma}) - \sum_{j<i} (\bar{\sigma}_i, \text{Ad}_{[ij]}\sigma_j).$$

Proof. Since $C_i = S_i C_{i-1}$, $\gamma_i = \gamma_{i-1} + C_{i-1}^{-1}\sigma_i C_{i-1}$ and so $(\gamma_i, \gamma_{i-1}) = (\sigma_i, \bar{\gamma}_{i-1})$, and inductively $\bar{\gamma}_i = \text{Ad}_{[i1]}\bar{\gamma} + \sum_{j=1}^i \text{Ad}_{[ij]}\sigma_j$. Therefore the term $-\sum_1^m (\gamma_i, \gamma_{i-1})$ yields the last two terms of the displayed expression, and $(\bar{\gamma}_m, \eta)$ yields the third and fourth terms. Finally since $b = hS_m \cdots S_1$, it follows that $\bar{\beta} = \bar{\eta} + \sum_1^m \text{Ad}_{h[mi]}\sigma_i$, and so $(\bar{\gamma}, \bar{\beta})$ yields the second and fifth terms. (For later use note $\beta = \text{Ad}_{[m1]}^{-1}\eta + \sum \text{Ad}_{[i1]}^{-1}\bar{\sigma}_i$.) \square

Thus if $u \in T_pM$ is arbitrary, it follows directly that

$$2\omega(v, u) = (\Gamma, \bar{\gamma}) + (\mathcal{H}, \dot{\eta}) + \sum (\Delta_i, \dot{\sigma}_i),$$

where the dots denote u components, and

$$\begin{aligned}\Gamma &= b^{-1}\bar{\gamma}'b - b\bar{\gamma}'b^{-1} - \sum \text{Ad}_{h[m_i]}\sigma'_i - \sum \text{Ad}_{[i1]}^{-1}\bar{\sigma}'_i, \\ \mathcal{H} &= \text{Ad}_h^{-1}\bar{\gamma}' + \text{Ad}_{[m1]}\bar{\gamma}' + \sum \text{Ad}_{[m_i]}\sigma'_i, \\ \Delta_i &= \text{Ad}_{h[m_i]}^{-1}\bar{\gamma}' + \text{Ad}_{[i-1,1]}\bar{\gamma}' - \sum_{j>i} \text{Ad}_{[j_i]}^{-1}\bar{\sigma}'_j + \sum_{j<i} \text{Ad}_{[i-1,j]}\sigma'_j.\end{aligned}$$

Now from (12) and its conjugate by b (and the expansion of β) it follows that $\Gamma = 0$. Similarly it follows that $\mathcal{H} = 2h^{-1}\bar{\gamma}'h$, and so the vanishing of $\omega(v, u)$ for all u implies $\pi_{\mathfrak{h}}(\bar{\gamma}')$ is zero, where $\pi_{\mathfrak{h}} : \mathfrak{g} \rightarrow \mathfrak{h}$ is the projection. The only other information we have is that Δ_i is orthogonal to \mathbf{u}_i for each i , i.e. $\Delta_i \in \mathfrak{h} \oplus \mathbf{u}_i$ (where $\mathbf{u}_i \subset \mathfrak{g}$ is the Lie algebra containing σ'_i). This implies $v = 0$ as follows. First observe that the expression for Δ_i implies

$$(13) \quad \text{Ad}_{S_i}\Delta_i - \Delta_{i+1} = -\bar{\sigma}'_i - \sigma'_{i+1}$$

for $i = 1, \dots, m-1$. Applying $\pi_{\mathfrak{h}}$ to this we see that $\pi_{\mathfrak{h}}(\Delta_i) = \pi_{\mathfrak{h}}(\text{Ad}_{S_i}\Delta_i) = \pi_{\mathfrak{h}}(\Delta_{i+1})$, and we define $\kappa = \pi_{\mathfrak{h}}(\Delta_i) \in \mathfrak{h}$ to be this common value. Now define

$$T_i = \text{Ad}_{S_i}\Delta_i + \sigma'_{i+1} = \Delta_{i+1} - \bar{\sigma}'_i.$$

Then due to the orthogonality conditions on the Δ_i it follows that $T_i = \sigma'_{i+1} - \bar{\sigma}'_i + \kappa$. Thus $\Delta_i + \sigma'_i = \text{Ad}_{S_i}^{-1}(\kappa)$. Taking $i = 1$ and expanding Δ_i , this says

$$b^{-1}\bar{\gamma}'b + \bar{\gamma}' - \sum_{j>1} \text{Ad}_{[j1]}^{-1}\bar{\sigma}'_j + \sigma'_1 = \text{Ad}_{S_1}^{-1}(\kappa).$$

In turn, since $\beta' = \sum \text{Ad}_{[j1]}^{-1}\bar{\sigma}'_j = b^{-1}\bar{\gamma}'b - \bar{\gamma}'$, this reduces to

$$(14) \quad 2(\bar{\gamma}' + \sigma'_1) = \text{Ad}_{S_1}^{-1}(\kappa).$$

Then taking the \mathfrak{h} component implies $\kappa = 0$, and thus $\Delta_i = -\sigma'_i$. Then from (13), $-\bar{\sigma}'_i + \sigma'_{i+1} = -\bar{\sigma}'_i - \sigma'_{i+1}$ and so $\sigma'_{i+1} = 0$ (for $i = 1, \dots, m-1$). In particular, $\Delta_m = 0$, and the expression for Δ_m now simplifies to

$$\Delta_m = \text{Ad}_{hS_m}^{-1}\bar{\gamma}' + \text{Ad}_{[m-1,1]}\bar{\gamma}' + \text{Ad}_{[m-1,1]}\sigma'_1 = 0.$$

Thus $b^{-1}\bar{\gamma}'b + \bar{\gamma}' + \sigma'_1 = 0$. Using (14) this implies $\bar{\gamma}' = 0$ and in turn $\sigma'_1 = 0$. Thus all the components of v are zero and (QH3) is established. \square

3.1. Pictures. We will draw pictures of two ways one might want to think about the higher fission spaces. The first is helpful to keep track of the monodromy relations, and the second expresses the possible ways to glue surfaces together. For general linear groups, an alternative viewpoint is possible in terms of graphs (see [21]).

First recall the standard way to obtain the double $G \times G$ (from [3]): one takes an annulus Σ (in the complex plane) with a marked point on each boundary circle. Then the moduli space of flat C^∞ connections on G bundles

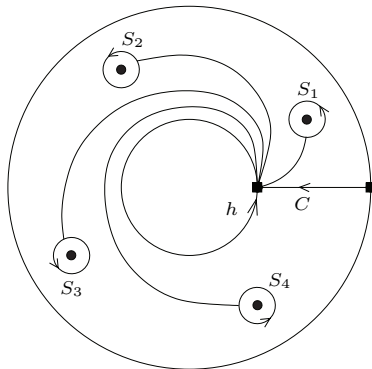


Figure 1. One way to picture the fission spaces

over Σ , together with a framing at each marked point, is naturally a quasi-Hamiltonian $G \times G$ space. Choosing two paths generating the fundamental groupoid of Σ (based at the two marked points) enables one to identify the moduli space with $G \times G$ (taking the monodromy of the connections along the chosen generating paths).

One may *picture* the fission spaces ${}_{G}\mathcal{A}_H^r$ in a similar way by puncturing the annulus at $2r$ equally spaced points in its interior, as in Figure 1. (The usual picture for the double is obtained if $r = 0$.) Note that this is not quite “what is actually happening” in the derivation of these spaces in terms of the Stokes phenomenon but nonetheless is sometimes useful. In some sense, in the Stokes phenomenon, the inner circle should be shrunk to zero and the punctures pushed into origin, forming part of the “analytic halo” of [51]. One of the surprises of the present article is that one does in fact, nonetheless, get genuine quasi-Hamiltonian spaces in this way. (So the quasi-Hamiltonian framework does indeed go beyond the context of flat connections on surfaces with boundary.) In later sections we will in fact take this viewpoint quite seriously and use it (in Section 8) to define the basic topological objects: *Stokes representations* and *Stokes G -local systems*.

The second picture explains the name fission and occurs if the group H may be written as a product $H = H_1 \times H_2$ of two groups. (The generalisation to arbitrarily many factors is immediate.) For example if G is a general linear group this is always the case, unless $H = G$. On the Lie algebra level, the Dynkin diagram of H arises by deleting some nodes in the Dynkin diagram of G (i.e. breaking that of G into pieces). Then it is more accurate to replace the annulus by the product of a circle and a Y shaped piece since one may glue on both a quasi-Hamiltonian H_1 -space and a quasi-Hamiltonian H_2 -space. Indeed if we draw a dashed line to represent the analytic halo (through the punctures added above), then after crossing this halo the pieces of surface may drift apart yielding Figure 2.

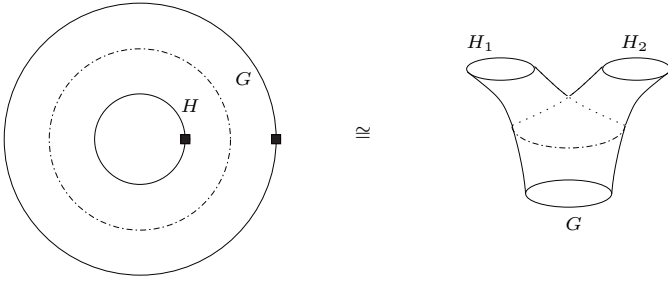


Figure 2. Another way to picture the fission spaces

3.2. *Fission varieties.* Thus we now have a large supply of quasi-Hamiltonian spaces and may glue them together and perform the reduction operation to obtain many symplectic manifolds.

Definition 3.5. A “fission variety” is a symplectic or quasi-Hamiltonian variety obtained via the operations of fusion and reduction on spaces of the form

- (a) conjugacy classes $\mathcal{C} \subset G$ in arbitrary complex reductive groups G ,
- (b) fission spaces ${}_G\mathcal{A}_H^r$, and
- (c) tame fission spaces $\mathbb{M} \cong (G \times P)/U$ of [19, Th. 9].

Many classes of algebraic symplectic manifolds arise as examples:

(1) The result of Section 4 below implies that all of the multiplicative quiver varieties of Crawley–Boevey and Shaw [27] (attached to arbitrary graphs) are examples of fission varieties.

(2) Since the double $G \times G$ is a special case of a fission space, the complexification of the results of [3] show that moduli spaces of G valued representations of the fundamental group of Riemann surfaces with boundary are fission varieties.

(3) More generally, one may consider the parabolic and parahoric extensions of the spaces in (2) by considering tame meromorphic connections on parahoric torsors over smooth compact algebraic curves. The tame fission spaces enable us to capture the corresponding Betti spaces as fission spaces too (cf. [19]); for G a general linear group, such spaces appear in Simpson’s Riemann–Hilbert correspondence [59] revisited from a quasi-Hamiltonian viewpoint by Yamakawa [69].

(4) Still more generally, one may consider spaces of monodromy and Stokes data classifying arbitrary (unramified) meromorphic connections on G -bundles on smooth algebraic curves (and, in turn, on parahoric torsors). In later sections of this paper we will show that these are also examples of fission varieties.

This example was our main motivation and provides the symplectic Betti description of all the hyperkähler manifolds of [10], together with the analogous spaces for arbitrary reductive groups G .

Many other, more exotic, examples are possible however. (An explicit example is described in [18].) To see how special the above spaces (1)–(4) are, note that the fission varieties in (1) only involve products of general linear groups (they provide a link to graphs and then to Kac–Moody root systems). On the other hand, the fission varieties in (2), (3) and (4) privilege one fixed reductive group G .

4. Derivation of $\mathcal{B}(V, W)$

Now we will specialise to $r = 2$ and show that the Van den Bergh spaces $\mathcal{B}(V, W)$ arise from the fission spaces. Recall that if $r = 2$ and we perform the reduction by G of ${}_G\mathcal{A}_H^r$ at the value 1 of the moment map, then the resulting space is

$$(15) \quad \left\{ (S_1, S_2, S_3, S_4, h) \in U_+ \times U_- \times U_+ \times U_- \times H \mid hS_4S_3S_2S_1 = 1 \right\}.$$

This inherits the structure of quasi-Hamiltonian H -space with moment map h^{-1} . (It is symplectic if H is a maximal torus as in [15].) By forgetting h, S_3, S_4 , this space (15) embeds as the (open) subset of $U_+ \times U_-$ consisting of pairs (S_1, S_2) such that $S_2S_1 \in P_+P_- \subset G$. The quasi-Hamiltonian two-form on (15) (obtained by restricting that on ${}_G\mathcal{A}_H^2$ to the subset where $C = b = 1$) is

$$(16) \quad \omega = \frac{1}{2}((\gamma_1, \gamma_2) + (\gamma_2, \gamma_3))$$

with $\gamma_i = C_i^*(\theta)$, and now $C_i = S_i \cdots S_1$ (since $C = 1$). Now we will further specialise to the case of a maximal proper parabolic subgroup of a general linear group. Thus suppose we are given two complex vector spaces V, W , take $G = \mathrm{GL}(V \oplus W)$ and choose P_+ to be the block upper triangular subgroup (and $H \cong \mathrm{GL}(V) \times \mathrm{GL}(W)$ to be the block diagonal subgroup). Then we may write

$$S_1 = \begin{pmatrix} 1 & a \\ 0 & 1 \end{pmatrix}, \quad S_2 = \begin{pmatrix} 1 & 0 \\ b & 1 \end{pmatrix}, \quad S_3 = \begin{pmatrix} 1 & c \\ 0 & 1 \end{pmatrix}, \quad S_4 = \begin{pmatrix} 1 & 0 \\ f & 1 \end{pmatrix}, \quad h = \begin{pmatrix} x & 0 \\ 0 & y \end{pmatrix}$$

where $a, c \in \mathrm{Hom}(W, V)$, $b, f \in \mathrm{Hom}(V, W)$, $x \in \mathrm{GL}(V)$ and $y \in \mathrm{GL}(W)$. One may then check that the relation $hS_4S_3 = S_1^{-1}S_2^{-1}$ from (15) is equivalent to the equations

$$(17) \quad x = 1 + ab, \quad y = (1 + ba)^{-1}, \quad c = -x^{-1}a, \quad f = -(b + bab).$$

Thus in this case the space (15) is isomorphic to the space

$$\{(a, b) \in \mathrm{Hom}(W, V) \oplus \mathrm{Hom}(V, W) \mid \det(1 + ab) \neq 0\} = \mathcal{B}(V, W).$$

Further note that the moment map h^{-1} on (15) has components (x^{-1}, y^{-1}) coinciding with the moment map (6) on $\mathcal{B}(V, W)$. Finally we verify that the two-forms agree.

LEMMA 4.1. *In the coordinates (a, b) , the two-form (16) equals*

$$\frac{1}{2} \left(\text{Tr}_V(1 + ab)^{-1} da \wedge db - \text{Tr}_W(1 + ba)^{-1} db \wedge da \right).$$

Proof. This is a direct calculation, which may be done completely algebraically. We start with a sum of words in the noncommuting symbols da, db, a, b, y (noting that $x^{-1} = 1 - ayb$) and then use $bay = 1 - y = yba$ to simplify the result (also using the cyclicity of the trace). We find⁴ $(\gamma_1, \gamma_2) = \text{Tr}(da \wedge db)$, $(\gamma_2, \gamma_3) = -\text{Tr}(ydb \wedge da) - \text{Tr}(aybda \wedge db)$, and the result follows since $x^{-1} = 1 - ayb$. \square

This agrees with the quasi-Hamiltonian two-form (7) on $\mathcal{B}(V, W)$. In other words, we have established the following theorem.

THEOREM 4.2. *If $G = \text{GL}(V \oplus W)$ and $H = \text{GL}(V) \times \text{GL}(W)$, then the map*

$$\mathcal{A}^2(V, W) // G \rightarrow \mathcal{B}(V, W); \quad (h, S_1, S_2, S_3, S_4) \mapsto (a, b)$$

is an isomorphism of quasi-Hamiltonian H -spaces, where a, b are the nontrivial matrix entries of S_1, S_2 respectively.

The spaces $\mathcal{B}(V, W)$ are the basic building blocks for the multiplicative quiver varieties of Crawley-Boevey–Shaw [27].

COROLLARY 4.3. *Any multiplicative quiver variety (in the sense of [27]) is a fission variety.*

Proof. The multiplicative quiver varieties are obtained by fusing together many copies of spaces of the form $\mathcal{B}(V, W)$ and then reducing at certain (central) conjugacy classes to obtain a symplectic manifold. So the result is immediate from Theorem 4.2. \square

Theorem 4.2 suggests how to find other building blocks, such as $\mathcal{B}(U, V, W) := \mathcal{A}^2(U, V, W) // G$, to construct more general multiplicative quiver varieties. This will be taken up in [21]. (It also suggests how one might define analogues of multiplicative quiver varieties for groups besides general linear groups by considering the reductions $\mathcal{B}^r := {}_G \mathcal{A}_H^r // G$ in general, e.g. if $H = H_1 \times H_2$.)

⁴Using a symbolic manipulation program.

Remark 4.4. Note that Van den Bergh [63], [64] constructs some “non-commutative quasi-Hamiltonian spaces” such that after choosing a linear representation, one obtains a genuine quasi-Hamiltonian structure. Presumably there are noncommutative quasi-Hamiltonian spaces that yield the higher fission spaces (in the general linear case) upon choosing a representation. (And maybe one can prove this by rewriting the algebraic proofs of (QH1)–(QH3).) However it is unclear if one could obtain the higher fission spaces for other reductive groups in this way, and this seems important for some applications.

5. Basic properties

In this section we will establish some basic properties of the spaces ${}_G\mathcal{A}_H^r$.

5.1. *Isomonodromy isomorphisms I.* Suppose $P_+ \subset G$ is a parabolic with Levi subgroup $H \subset P_+$ and opposite parabolic P_- . Write $\mathcal{A} = {}_G\mathcal{A}_H^r$ for the fission space associated to (P_+, H) and \mathcal{A}' for the corresponding space associated to (P_-, H) , i.e. with the roles of P_+ and P_- swapped.

An isomorphism Θ between the spaces \mathcal{A} and \mathcal{A}' may be defined as follows. Suppose $(C, h, \mathbf{S}) \in \mathcal{A}$, then define $(D, g, \mathbf{T}) = \Theta(C, h, \mathbf{S}) \in \mathcal{A}'$ by the formulae

$$\begin{aligned} T_i &= S_{i+1} & \text{for } i = 1, \dots, m-1 \\ T_m &= h^{-1}S_1h, & D = S_1C, & g = h, \end{aligned}$$

where $m = 2r$. Then it is clear that $D^{-1}hT_m \cdots T_1D = C^{-1}hS_m \cdots S_1C$, so the moment maps match up.

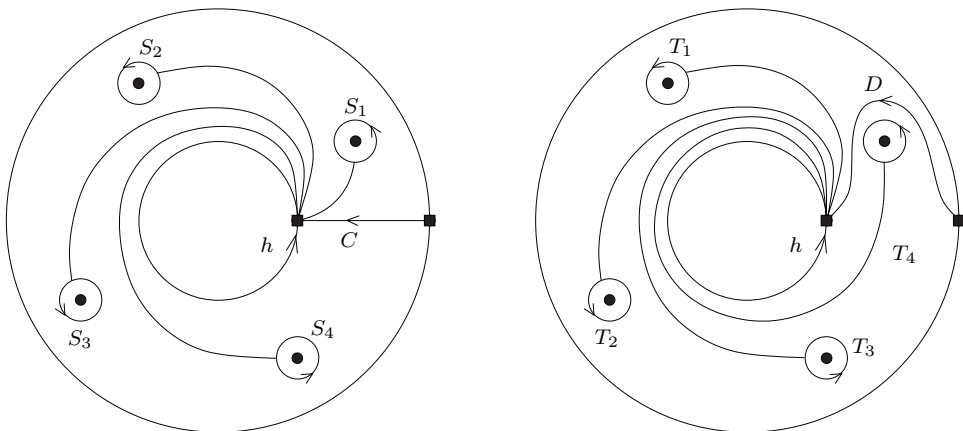


Figure 3.

PROPOSITION 5.1. *The map Θ is an isomorphism of quasi-Hamiltonian $G \times H$ spaces.*

Proof. Let $D_i = T_i \cdots T_1 D$ so that $D_i = C_{i+1}$ if $i < m$ and $D_m = h^{-1} S_1 h C_m$. Let $p = h T_m \cdots T_1 = S_1 b S_1^{-1}$. Thus the aim is to verify that the expression (9) for 2ω on \mathcal{A} equals

$$(18) \quad (\bar{\delta}, \text{Ad}_p \bar{\delta}) + (\bar{\delta}, \bar{\mathcal{P}}) + (\bar{\delta}_m, \eta) - \sum_{i=1}^m (\delta_i, \delta_{i-1})$$

when the variables are related in this way, where $\delta_i = D_i^*(\bar{\theta})$ and $\bar{\mathcal{P}} = p^*(\bar{\theta})$ etc. First $\bar{\delta} = \bar{\sigma}_1 + S_1 \bar{\gamma} S_1^{-1}$, where $\bar{\sigma}_1 = S_1^*(\bar{\theta})$, so that

$$(19) \quad (\bar{\delta}, \text{Ad}_p \bar{\delta}) = (\sigma_1, b\sigma_1 b^{-1}) + (\bar{\gamma}, b\sigma_1 b^{-1}) + (\sigma_1, b\bar{\gamma} b^{-1}) + (\bar{\gamma}, b\bar{\gamma} b^{-1}).$$

Next, since $\bar{\mathcal{P}} = \bar{\sigma}_1 + S_1 \bar{\beta} S_1^{-1} - \text{Ad}_{(S_1 b)} \sigma_1$, it follows that

$$(20) \quad (\bar{\delta}, \bar{\mathcal{P}}) = (\sigma_1, \bar{\beta}) - (\sigma_1, b\sigma_1 b^{-1}) + (\bar{\gamma}, \sigma_1) - (\bar{\gamma}, b\sigma_1 b^{-1}) + (\bar{\gamma}, \bar{\beta}).$$

Upon summing these two expressions, four terms cancel, the first two terms of 2ω are obtained and there are three remaining terms. Now

$$\delta_m = \gamma_m + C_m^{-1} \eta C_m + \text{Ad}_{(h C_m)}^{-1} \sigma_1 - \text{Ad}_{(S_1 h C_m)}^{-1} \bar{\eta},$$

so the next terms of (18) are

$$(21) \quad (\bar{\delta}_m, \eta) = (\text{Ad}_{(S_1 h)} \bar{\gamma}_m, \bar{\eta})$$

since the other terms are zero, and

$$(22) \quad - \sum_1^{m-1} (\delta_i, \delta_{i-1}) = - \sum_2^m (\gamma_i, \gamma_{i-1})$$

and finally

$$(23) \quad -(\delta_m, \delta_{m-1}) = -(\delta_m, \gamma_m) = -(\eta, \bar{\gamma}_m) - (h^{-1} \sigma_1 h, \bar{\gamma}_m) + (\text{Ad}_{(S_1 h)}^{-1} \bar{\eta}, \bar{\gamma}_m).$$

Now (21) cancels the last term of (23), and clearly all the remaining terms of 2ω are obtained except $-(\gamma_1, \gamma_0)$. But this equals $-(\sigma_1, \bar{\gamma})$, which is in (20). Thus to finish we need to check that the leftover terms disappear. These are $(\sigma_1, b\bar{\gamma} b^{-1} + \bar{\beta} - h\bar{\gamma}_m h^{-1})$, and they vanish since $h C_m = b C$ (and $\bar{\eta}$ pairs to zero with σ_1). \square

In fact the same proof also yields a more general statement (one may first break up the unipotent groups into a direct spanning decomposition); see Section 6.2. Note that Θ^{-m} (the m th power of the inverse of Θ) coincides with the ‘‘twist automorphism’’ of [3, Th. 4.5], related to the Dehn twist of two-manifolds.

Example 5.2. Suppose $r = 2$. We take $G = \mathrm{GL}(V \oplus W)$, $H = \mathrm{GL}(V) \times \mathrm{GL}(W)$ with P_+ the block upper triangular subgroup of G , as in [Section 4](#). Then the isomonodromy isomorphism of [Proposition 5.1](#) is

$$(24) \quad \mathcal{A} \rightarrow \mathcal{A}';$$

$$(C, h, S_1, S_2, S_3, S_4) \mapsto (S_1 C, h, S_2, S_3, S_4, h^{-1} S_1 h).$$

Reducing by G thus yields a commuting square of isomorphisms of quasi-Hamiltonian H -spaces:

$$\begin{array}{ccc} \mathcal{A} // G & \xrightarrow{\cong} & \mathcal{A}' // G \\ \downarrow \cong & & \downarrow \cong \\ \mathcal{B}(V, W) & \xrightarrow{\cong} & \mathcal{B}(W, V) \end{array}$$

$$(a, b) \mapsto (b, -(1 + ab)^{-1}a),$$

where the top isomorphism is induced from (24), the left-hand isomorphism is that of [Theorem 4.2](#) (taking the nontrivial matrix entries (a, b) of S_1, S_2) and the right-hand isomorphism is the analogue for \mathcal{A}' , i.e. taking the nontrivial matrix entries (b, c) of S_2, S_3 . Thus the isomorphism along the bottom is $(a, b) \mapsto (b, c)$, where $c = -(1 + ab)^{-1}a$ as in (17). This is the map used in [27] to reverse the orientation of the edges of multiplicative quiver varieties.

5.2. Conjugacy isomorphisms. Suppose that $P \subset G$ is a parabolic subgroup with Levi subgroup $H \subset P$. Suppose ϕ is an automorphism of G preserving H and the inner product on \mathfrak{g} . Then $Q = \phi(P)$ is again a parabolic of G with Levi subgroup H . A basic example is if P is a Borel and H is a maximal torus, and ϕ is the inner automorphism obtained by conjugating by an element of the normaliser of H (representing an element of the Weyl group $N(H)/H$).

Write $\mathcal{A} = {}_G\mathcal{A}_H^r$ for the space associated to (P, H) and \mathcal{A}' for the corresponding space attached to (Q, H) . Then the map $\mathcal{A} \rightarrow \mathcal{A}'$ defined by ϕ is clearly an isomorphism of spaces and relates the quasi-Hamiltonian two-forms. (But it is not an isomorphism of quasi-Hamiltonian spaces since it does not relate the moment maps if ϕ acts nontrivially on $G \times H$.) Nonetheless, upon reduction the fact the two-forms are related implies the resulting symplectic manifolds will be isomorphic.

For example if H is a maximal torus then \mathcal{A}/G and \mathcal{A}'/G will be isomorphic Poisson manifolds, with an isomorphism given by ϕ . (Up to a covering, if $r = 1$, these spaces are two realisations of the dual Poisson Lie group G^* , and examples of such isomorphisms appear in [13, Lemma 3.5].)

5.3. Inversion anti-isomorphisms. We will say a map $\phi : M \rightarrow N$ between two quasi-Hamiltonian G -spaces is an *anti-isomorphism* if it is an isomorphism

of spaces and negates the two-form and inverts the moment map, i.e.

$$\phi^*(\omega_N) = -\omega_M, \quad \mu_N \circ \phi = \iota \circ \mu_M : M \rightarrow G,$$

where $\iota : G \rightarrow G$ is the inverse map. A simple example is the ‘flip’ anti-isomorphism

$$(25) \quad \mathcal{B}(V, W) \rightarrow \mathcal{B}(W, V); (a, b) \mapsto (b, a).$$

Now suppose $P_+ \subset G$ is a parabolic subgroup with Levi subgroup $H \subset P$ and opposite parabolic P_- . Write $\mathcal{A} = {}_G\mathcal{A}_H^r$ for the space associated to (P_+, H) and \mathcal{A}' for the corresponding space associated to (P_-, H) , i.e. with the roles of P_+ and P_- swapped.

PROPOSITION 5.3. *The map $\mathcal{A} \rightarrow \mathcal{A}'$; $(C, h, \mathbf{S}) \mapsto (C, h^{-1}, \mathbf{T})$ where*

$$T_i = hS_{m+1-i}^{-1}h^{-1}$$

is an anti-isomorphism of quasi-Hamiltonian $G \times H$ -spaces.

Geometrically this corresponds to reversing the orientation.

Proof. Suppose we change coordinates on \mathcal{A} as follows:

$$d_i = h^{-1}S_{m+1-i}^{-1}h, \quad e_i = S_i$$

for $i = 1, \dots, r$ (with $m = 2r$ as usual), and set

$$D_i = d_i \cdots d_1 C, \quad E_i = e_i \cdots e_1 C.$$

In particular, now $C = E_0 = D_0$, and we define $E = E_r, D = D_r$ so that the G component of the moment map is $\mu_G = D^{-1}hE$. Then one may check that the expression (9) for 2ω on \mathcal{A} equals

$$(\overline{D}, \text{Ad}_b \overline{E}) + (\overline{D}, \overline{\eta}) + (\overline{E}, \eta) + \sum_{i=1}^r (\mathcal{D}_i, \mathcal{D}_{i-1}) - (\mathcal{E}_i, \mathcal{E}_{i-1})$$

where $\mathcal{D}_i = D^*(\theta), \mathcal{E}_i = E^*(\theta)$, etc. Now the map to \mathcal{A}' corresponds to swapping D_i and E_i for each i (i.e. to swapping d_i and e_i) and inverting h . Then it is clear that the expression for ω is negated. \square

Note that the maps

$$(26) \quad \mathcal{A} \rightarrow \mathcal{A}; (C, h, \mathbf{S}) \mapsto (hC, h, h\mathbf{S}h^{-1})$$

and

$$(27) \quad \mathcal{A} \rightarrow \mathcal{A}; (C, h, \mathbf{S}) \mapsto (b^{-1}C, h, \mathbf{S})$$

are both quasi-Hamiltonian automorphisms of $\mathcal{A} = {}_G\mathcal{A}_H^r$ where $b = hS_m \cdots S_1$. (If $p = (C, h, \mathbf{S}) \in \mathcal{A}$, then the first map is $p \mapsto \mu_H(p) \cdot p$ and the second is $p \mapsto \mu_G(p) \cdot p$, so this follows from [3] Remark 4.2.) Thus one can conjugate the above inversion anti-isomorphism in various ways to get equivalent versions.

6. Further properties

This section will establish some further properties, which will be useful later on. First it is convenient to consider more general products of unipotent groups. Fix a connected complex reductive group G and a subgroup $H \subset G$ such that H is a Levi subgroup of some parabolic subgroup of G . Then define an “ordered set of unipotent subgroups of G subordinate to H ” to be a collection $\mathcal{U} = (U_1, \dots, U_m)$ of unipotent subgroups $U_i \subset G$ such that

- (1) for each i , there is a parabolic subgroup $P_i \subset G$ such that $H \subset P_i$ is a Levi subgroup, and $U_i \subset \text{Rad}_u(P_i)$ is a subgroup of the unipotent radical of P_i , and
- (2) each U_i is normalised by H , i.e. conjugation by any $h \in H$ preserves each U_i .

Eventually more specific collections of subgroups will be considered, but this definition is convenient to establish some inductive statements needed later. Given such an ordered set of unipotent subgroups \mathcal{U} , consider the space

$$\mathcal{A} = G \times H \times \mathcal{U}$$

with two-form ω specified (as usual) by

$$(28) \quad 2\omega = (\bar{\gamma}, \text{Ad}_b \bar{\gamma}) + (\bar{\gamma}, \bar{\beta}) + (\bar{\gamma}_m, \eta) - \sum_{i=1}^m (\gamma_i, \gamma_{i-1}),$$

i.e. as in (9), but now with $S_i \in U_i$. (The other notations are the same so, for example, $b = hS_m \cdots S_1, C_i = S_i \cdots S_1 C_i$.) Note that there is still an action of $G \times H$ on \mathcal{A} (via the same formulae as before) which preserves ω . Moreover the map $\mu = (C^{-1}bC, h^{-1})$ from \mathcal{A} to $G \times H$ is well defined and equivariant. Of course at this level of generality, ω will not necessarily be a quasi-Hamiltonian two-form on \mathcal{A} .

6.1. Direct spanning equivalence. Suppose now that V_1, \dots, V_k are consecutive subgroups in \mathcal{U} for some integer k (i.e. for some i , that $V_1 = U_i, V_2 = U_{i+1}, \dots, V_k = U_{i+k-1}$). Then define

$$W = V_k \cdots V_1 = \{S_k \cdots S_1 \in G \mid S_i \in V_i\} \subset G.$$

Suppose further that W is “directly spanned” by the V_i , i.e. W is a unipotent subgroup of G and the product map $V_k \times \cdots \times V_1 \rightarrow W$ is an isomorphism of varieties (but not necessarily of groups); cf. Borel [23, §14.3]. Then we can consider a new ordered set of unipotent subgroups \mathcal{U}' by deleting U_i, \dots, U_{i+k-1} from \mathcal{U} and inserting W in their place. Correspondingly there is a space $\mathcal{A}' = G \times H \times \mathcal{U}'$ which again has a two-form, denoted ω' . The product map $V_k \times \cdots \times V_1 \rightarrow W$ extends to give an isomorphism $\mathcal{A} \rightarrow \mathcal{A}'$ (which is the identity on G, H and the other unipotent groups).

LEMMA 6.1. *The isomorphism $\mathcal{A} \rightarrow \mathcal{A}'$ given by the product map relates the two-forms ω and ω' .*

Proof. Since everything else is unchanged, this follows from the general fact that

$$(\gamma_k, \gamma_0) = (\gamma_k, \gamma_{k-1}) + \cdots + (\gamma_1, \gamma_0)$$

if $\gamma_i = C_i^*(\theta)$, where θ is the left-invariant Maurer-Cartan form on G and $C_i : V_1 \times \cdots \times V_k \times G \rightarrow G$ is the map taking (S_1, \dots, S_k, C) to $C_0 = C, C_i = S_i \cdots S_1 C$, respectively. By induction it is sufficient to show $(\gamma_i, \gamma_0) = (\gamma_i, \gamma_{i-1}) + (\gamma_{i-1}, \gamma_0)$. Now if $S_f = S_{i-1} \cdots S_1$, then since $C_{i-1} = S_f C$, it follows that $\gamma_{i-1} = C^{-1} \sigma_f C + \gamma_0$ where $\sigma_f = S_f^*(\theta)$, so that

$$(\gamma_i, \gamma_{i-1}) = (\gamma_i, C^{-1} \sigma_f C) + (\gamma_i, \gamma_0) \quad \text{and} \quad (\gamma_{i-1}, \gamma_0) = (\sigma_f, \bar{\gamma}_0).$$

Thus we should show that $(\sigma_f, \bar{\gamma}_0 - C \gamma_i C^{-1}) = 0$. However if we define $S_g = S_i \cdots S_2 S_1$, then $S_g = C_i C^{-1}$ so $\sigma_g = C \gamma_i C^{-1} - \bar{\gamma}_0$, and the result follows from the fact that $(\sigma_f, \sigma_g) = 0$ (since they take values in the isotropic subspace $\text{Lie}(W)$ of \mathfrak{g}). \square

More generally, define two sets \mathcal{U} and \mathcal{U}' of ordered unipotent subgroups to be “direct spanning equivalent” if they are related by a sequence of such isomorphisms (or their inverses). Lemma 6.1 implies any isomorphism $\mathcal{A} \rightarrow \mathcal{A}'$ coming from a direct spanning equivalence relates their two-forms. Thus the following is now immediate.

COROLLARY 6.2. *If (\mathcal{A}, ω) and (\mathcal{A}', ω') are direct spanning equivalent, and (\mathcal{A}, ω) is a quasi-Hamiltonian $G \times H$ -space, then so is (\mathcal{A}', ω') .*

(It is clear that the actions and moment maps match up.) For example, in the case where H is a maximal torus of G , it follows from [23, §14.4] that each U_i in any ordered set \mathcal{U} of unipotent groups is directly spanned, in any order, by all the (one-dimensional) root groups it contains. Clearly one could subsequently re-assemble the resulting (ordered set of) root groups into another ordered set of larger unipotent groups in many different ways.

The notion of direct spanning equivalence may be viewed as an abstraction of the relation between “Stokes matrices” and “Stokes factors” appearing in the GL_n case in Balsler–Jurkat–Lutz [8, §4]. The extension to other groups is in [13] and the observation that this situation is well understood in terms of direct spanning subgroups is in [12, p. 156] and [13]. It will become clear in Section 6.3 (and Section 7.1) that there are many quasi-Hamiltonian spaces of the form $\mathcal{A} = G \times H \times \mathcal{U}$ that are not direct spanning equivalent to one of the fission spaces ${}_G \mathcal{A}_H^r$.

6.2. *Isomonodromy isomorphisms II.* Suppose $\mathcal{A} = G \times H \times \mathcal{U}$ as above, with $\mathcal{U} = (U_1, \dots, U_m)$ an arbitrary ordered set of unipotent subgroups. We define $\mathcal{A}' = G \times H \times \mathcal{U}'$, where

$$\mathcal{U}' = (U_2 \dots, U_m, U_1);$$

i.e. $U'_i = U_{i+1}$ for all $i \neq m$, and $U'_m = U_1$. Then we may define an isomonodromy isomorphism $\Theta : \mathcal{A} \rightarrow \mathcal{A}'$ as in [Section 5](#); i.e. suppose $(C, h, \mathbf{S}) \in \mathcal{A}$, and define $(D, g, \mathbf{T}) = \Theta(C, h, \mathbf{S}) \in \mathcal{A}'$ by the formulae

$$\begin{aligned} T_i &= S_{i+1} \quad \text{for } i = 1, \dots, m-1, \\ T_m &= h^{-1}S_1h, \quad D = S_1C, \quad g = h. \end{aligned}$$

Then it is clear that $D^{-1}hT_m \dots T_1D = C^{-1}hS_m \dots S_1C$ so the moment maps match up. Examples of such (refined) isomorphisms were considered in [Proposition 3.7](#) of [\[13\]](#). The proof of [Proposition 5.1](#) now goes through verbatim to establish

PROPOSITION 6.3. *The map Θ relates the two-forms on \mathcal{A} and \mathcal{A}' .*

Thus if both of the spaces \mathcal{A} and \mathcal{A}' are quasi-Hamiltonian, then Θ is a quasi-Hamiltonian isomorphism.

For example this can be used to show that up to isomorphism the fission spaces do not depend on the choice of parabolic subgroup P_+ , given a fixed Levi subgroup $H \subset G$. (This follows from [Theorem 10.4](#) below.)

6.3. *Nesting.* Now consider the situation where there is an intermediate reductive group K between G and H ,

$$H \subset K \subset G,$$

such that we can consider ordered sets of unipotent groups

$$\mathcal{U}, \mathcal{U}', \mathcal{U}'' \quad \text{subordinate to} \quad H \subset G, H \subset K, K \subset G$$

respectively (so that K is again the Levi subgroup of a parabolic of G). As above we thus get spaces

$$\mathcal{A} = G \times H \times \mathcal{U}, \quad \mathcal{A}' = K \times H \times \mathcal{U}', \quad \mathcal{A}'' = G \times K \times \mathcal{U}''$$

with two forms $\omega, \omega', \omega''$ respectively.

Without loss of generality we may assume (by introducing some trivial unipotent groups $\{1\}$ via direct spanning equivalence) that each of $\mathcal{U}, \mathcal{U}'$ and \mathcal{U}'' contains the same number m of groups. Suppose now that U_i is directly spanned by U'_i, U''_i for each i , where U_i is the i th group in \mathcal{U} , etc. (In the present situation, since K normalises U''_i , this direct spanning condition just means U_i is the semidirect product of U'_i and U''_i .) Then we can identify \mathcal{A} with the “gluing” of \mathcal{A}' and \mathcal{A}'' along K as follows. We have not assumed the spaces are quasi-Hamiltonian, but the definition of gluing is as one would guess: Let

$(D, h, \{A_i\})$ denote a point of \mathcal{A}' (with $A_i \in U'_i$), and let $(C, k, \{B_i\})$ denote a point of \mathcal{A}'' (with $B_i \in U''_i$). Then the gluing is defined to be

$$\mathcal{A}' \underset{K}{\varepsilon_3} \mathcal{A}'' = \{(D, h, \{A_i\}, C, k, \{B_i\}) \in \mathcal{A}' \times \mathcal{A}'' \mid k = hA_m \cdots A_1\} / K.$$

Since the action of K is free, we can remove it by setting $D = 1$ and thus identify this gluing with

$$\{(C, h, \{A_i\}, \{B_i\})\} = G \times H \times \mathcal{U}' \times \mathcal{U}''.$$

Since each U_i is directly spanned by U'_i, U''_i , the product $\mathcal{U}' \times \mathcal{U}''$ is isomorphic to \mathcal{U} , and so the gluing is isomorphic to \mathcal{A} , but we will choose the isomorphism so that the two-forms match up, as follows. Define $D_0 = D = 1$ and

$$D_i = A_i \cdots A_1 \in K.$$

Then define $S_i \in U_i$ to be

$$S_i = D_i B_i D_{i-1}^{-1}.$$

Said differently, $S_i = A_i \widetilde{B}_i$ where $\widetilde{B}_i := D_{i-1} B_i D_{i-1}^{-1}$. Clearly $\widetilde{B}_i \in U''_i$ since K normalises U''_i , and so in turn $S_i \in U_i$ by our direct spanning assumption. Thus taking the point $(C, h, \{S_i\}) \in \mathcal{A}$ defines an isomorphism between the gluing and \mathcal{A} .

THEOREM 6.4. *This isomorphism*

$$\mathcal{A}' \underset{K}{\varepsilon_3} \mathcal{A}'' \cong \mathcal{A}$$

relates the two-form ω on \mathcal{A} to that induced on the left-hand side from ω' and ω'' . In particular, if \mathcal{A}' and \mathcal{A}'' are quasi-Hamiltonian, then so is \mathcal{A} .

Proof. The “induced two-form” on the left-hand side is just the restriction of the two-form on the product $\mathcal{A}' \times \mathcal{A}''$ to the subvariety where $D = 1$ and $k = hA_m \cdots A_1$. (This subvariety is then identified with \mathcal{A} .) Thus we must show there is the following equality of two forms on this subvariety:

$$\begin{aligned} & (\bar{\delta}, \text{Ad}_k \bar{\delta}) + (\bar{\delta}, \bar{\kappa}) + (\bar{\delta}_m, \eta) - \sum_{i=1}^m (\delta_i, \delta_{i-1}) \\ & + (\bar{\mathcal{E}}, \text{Ad}_p \bar{\mathcal{E}}) + (\bar{\mathcal{E}}, \bar{\mathcal{P}}) + (\bar{\mathcal{E}}_m, \kappa) - \sum_{i=1}^m (\mathcal{E}_i, \mathcal{E}_{i-1}) \\ & = (\bar{\gamma}, \text{Ad}_b \bar{\gamma}) + (\bar{\gamma}, \bar{\beta}) + (\bar{\gamma}_m, \eta) - \sum_{i=1}^m (\gamma_i, \gamma_{i-1}), \end{aligned}$$

where $p = kB_m \cdots B_1$, $k = hA_m \cdots A_1$, $\kappa = k^*(\theta)$, $\gamma_i = C_i^*(\theta)$, $\delta_i = D_i^*(\theta)$, $\mathcal{E}_i = E_i^*(\theta)$, and $E_i = B_i \cdots B_1 C$. Firstly $D = 1$ so $\bar{\delta} = 0$, simplifying the first line.

Secondly $p = kB_m \cdots B_1 = hA_m \cdots A_1 B_m \cdots B_1 = \cdots = hS_m \cdots S_1 = b$ so some terms cancel. Consequently we must show

$$\sum_{i=1}^m (\delta_i, \delta_{i-1}) + (\mathcal{E}_i, \mathcal{E}_{i-1}) = (\bar{\mathcal{E}}_m, \kappa) + (\bar{\delta}_m - \bar{\gamma}_m, \eta) + \sum_{i=1}^m (\gamma_i, \gamma_{i-1}).$$

Now since $C_i = D_i E_i$, we find $\gamma_i = E_i^{-1} \delta_i E_i + \mathcal{E}_i$, and so

$$(\gamma_i, \gamma_{i-1}) = (\mathcal{E}_i, \mathcal{E}_{i-1}) + (\delta_i, \text{Ad}_{B_i} \delta_{i-1}) + (\text{Ad}_{B_i}^{-1}(\bar{\mathcal{E}}_i), \delta_{i-1}) + (\delta_i, \text{Ad}_{B_i} \bar{\mathcal{E}}_{i-1})$$

using the fact that $B_i = E_i E_{i-1}^{-1}$. Now observe that $(\delta_i, \text{Ad}_{B_i} \delta_{i-1}) = (\delta_i, \delta_{i-1})$; indeed, if we consider $K \rtimes U_i'' \hookrightarrow G$, then $\text{Ad}_{B_i} \delta_{i-1}$ takes values in $\text{Lie}(K) \oplus \text{Lie}(U_i'')$ and has $\text{Lie}(K)$ component δ_{i-1} —but this decomposition is orthogonal so the claim follows. On the other hand, using $C_m = D_m E_m$ to expand $\bar{\gamma}_m$ and $k = hD_m$ to expand κ , we see $(\bar{\mathcal{E}}_m, \kappa) + (\bar{\delta}_m - \bar{\gamma}_m, \eta) = (\bar{\mathcal{E}}_m, \delta_m)$ and so we are reduced to showing

$$\sum_{i=1}^m (\text{Ad}_{B_i}^{-1}(\bar{\mathcal{E}}_i), \delta_{i-1}) + (\delta_i, \text{Ad}_{B_i} \bar{\mathcal{E}}_{i-1}) = -(\bar{\mathcal{E}}_m, \delta_m).$$

But this statement holds for all m and can be proved by induction on m as follows. For $m = 0$ it is trivial as both sides are zero. Otherwise assume it holds for $m = n - 1$, so the statement for $m = n$ reduces to showing

$$(29) \quad -(\bar{\mathcal{E}}_n, \delta_n) = (\text{Ad}_{B_n}^{-1}(\bar{\mathcal{E}}_n), \delta_{n-1}) + (\delta_n, \text{Ad}_{B_n} \bar{\mathcal{E}}_{n-1}) - (\bar{\mathcal{E}}_{n-1}, \delta_{n-1}).$$

Now $E_n = B_n E_{n-1}$ so $\bar{\mathcal{E}}_n = \bar{\mathcal{B}}_n + \text{Ad}_{B_n} \bar{\mathcal{E}}_{n-1}$, where $\bar{\mathcal{B}}_n = B_n^*(\bar{\theta})$. Now $(\delta_n, \bar{\mathcal{B}}_n) = 0$ (since $\text{Lie}(K) \perp \text{Lie}(U_n'')$), so the left-hand side of (29) equals $-(\text{Ad}_{B_n} \bar{\mathcal{E}}_{n-1}, \delta_n)$, which cancels with the second term on the right-hand side. Finally substituting $\bar{\mathcal{E}}_n$, the remaining terms on the right-hand side simplify to $(\bar{\mathcal{B}}_n, \delta_{n-1})$, which is zero since $\text{Lie}(K) \perp \text{Lie}(U_n'')$. \square

In general the gluing of two such quasi-Hamiltonian spaces end to end will be referred to as “nesting”. This will be used as the key inductive step in [Section 7](#) to establish the quasi-Hamiltonian structure on spaces of unramified Stokes data. It may also be used to establish various isomorphisms between fission spaces as follows.

Suppose $H \subset K \subset G$ as above, and choose parabolic subgroups $P_+ \subset G$, $P'_+ \subset K$, $P''_+ \subset G$ with Levi subgroups H, H, K respectively. Then for any integer $r \geq 1$, the fission spaces

$$\mathcal{A} = {}_H \mathcal{A}_G^r, \quad \mathcal{A}' = {}_H \mathcal{A}_K^r, \quad \mathcal{A}'' = {}_K \mathcal{A}_G^r$$

are well defined (using these choices of parabolic subgroups). Now suppose further that the parabolics have been chosen so that P_+ is the semidirect product $P'_+ \rtimes U''_+$ of P'_+ and the unipotent radical U''_+ of P''_+ (i.e. $P_+ \cap K = P'_+$). In this situation we thus have

COROLLARY 6.5. *The nesting of two fission spaces of the same level r is again a fission space,*

$${}_H\mathcal{A}_K^r \varepsilon \exists {}_K\mathcal{A}_G^r \cong {}_H\mathcal{A}_G^r,$$

as quasi-Hamiltonian $G \times H$ -spaces.

Proof. This follows from [Theorem 6.4](#) since $U_{\pm} = U'_{\pm} \times U''_{\pm}$. □

7. Stokes data for complex reductive groups

Fix a connected complex reductive group G with Lie algebra \mathfrak{g} . In brief, the aim of this section is to define the space of Stokes data $\text{Sto}(Q)$ attached to an *irregular type* Q ; such Q determines a finite set of singular directions $\mathbb{A} \subset S^1$ and a (complicated) unipotent group $\text{Sto}_d \subset G$ for each singular direction $d \in \mathbb{A}$, and $\text{Sto}(Q)$ is the product of these unipotent groups. Then we will define a slightly larger space $\mathcal{A}(Q)$ and show it is quasi-Hamiltonian.

Choose a maximal torus $T \subset G$, and let $\mathfrak{t} \subset \mathfrak{g}$ denote the corresponding Lie algebras. Let Δ be a complex disc, and let $a \in \Delta$ be a marked point. Let $\widehat{\mathcal{O}}$ denote the formal completion at a of the ring of holomorphic functions on Δ , and let $\widehat{\mathcal{K}}$ denote its field of fractions.

Definition 7.1. An (unramified) *irregular type* at a is an element

$$Q \in \mathfrak{t}(\widehat{\mathcal{K}})/\mathfrak{t}(\widehat{\mathcal{O}}).$$

One may think of an irregular type as a \mathfrak{t} -valued meromorphic function germ, well defined modulo holomorphic terms. Explicitly, if we choose a local coordinate z on Δ vanishing at a , then $\widehat{\mathcal{O}} = \mathbb{C}[[z]]$, $\widehat{\mathcal{K}} = \mathbb{C}((z))$, and so then an irregular type Q may be written in the form

$$Q = \frac{A_r}{z^{k_r}} + \cdots + \frac{A_1}{z^{k_1}}$$

for integers $0 < k_1 < \cdots < k_r$ and elements $A_i \in \mathfrak{t} \subset \mathfrak{g}$ for $i = 1, \dots, r$. (The more abstract definition is coordinate independent and so will be useful later.)

Let $H \subset G$ be the stabiliser of Q under the adjoint action, i.e. $H = \{g \in G \mid \text{Ad}_g(A_i) = A_i \text{ for all } i \geq 1\}$, so H is again a connected complex reductive group with maximal torus T . We will (abusively) write $H = C_G(Q)$ and call it the centraliser of Q . Let $\mathcal{R} \subset \mathfrak{t}^*$ be the set of roots of \mathfrak{g} relative to \mathfrak{t} , and recall the root space decomposition

$$\mathfrak{g} = \mathfrak{t} \oplus \bigoplus_{\alpha \in \mathcal{R}} \mathfrak{g}_{\alpha},$$

where $\mathfrak{g}_{\alpha} = \{X \in \mathfrak{g} \mid [Y, X] = \alpha(Y)X \text{ for all } Y \in \mathfrak{t}\}$ is the (one-dimensional) root space of $\alpha \in \mathcal{R}$. Thus for each root $\alpha \in \mathcal{R}$, we may define

$$q_{\alpha} = \alpha \circ Q,$$

which is just a meromorphic function (modulo holomorphic terms). Define the degree $\deg(q_\alpha)$ of q_α to be its pole order at a ; using the coordinate z we may identify q_α with an element of $z^{-1}\mathbb{C}[z^{-1}]$, and so $\deg(q_\alpha)$ is the degree of the polynomial $q_\alpha(1/z)$. (It is an integer ≥ 0 , equal to zero if q_α does not have a pole at a .)

Now we start to describe the space of Stokes data attached to Q . This is abstracted from the $\mathrm{GL}_n(\mathbb{C})$ case studied in [51], [46], as was previously done in [13] in the case when A_r is regular semisimple. (Again, the use of the notion of direct spanning subgroups of unipotent groups simplifies things.) Let $\widetilde{\Delta} \rightarrow \Delta$ denote the real oriented blow-up at a , replacing a with the circle S^1 of real oriented tangent directions at a . Given a root $\alpha \in \mathcal{R}$ consider the function $\exp(q_\alpha(z))$ as z approaches zero along rays in various directions $d \in S^1$.

Definition 7.2. A direction $d \in S^1$ will be said to be a *singular direction supported by α* (or an *anti-Stokes direction*) if $\exp(q_\alpha(z))$ has maximal decay as $z \rightarrow 0$ in the direction d .

(Thus if c_α/z^k is the most singular term of q_α , these are the directions along which the function c_α/z^k is real and negative.) Let $\mathbb{A} \subset S^1$ be the finite set of singular directions (for all roots α). If $d \in \mathbb{A}$, let

$$\mathcal{R}(d) \subset \mathcal{R}$$

denote the (nonempty) subset of roots supporting d . Further, given an integer k , let

$$\mathcal{R}(d, k) \subset \mathcal{R}(d)$$

denote the subset of roots $\alpha \in \mathcal{R}(d)$ such that $\deg(q_\alpha) = k$. For example (similarly to [13]) if $r = k_1 = 1$ and Δ is the unit disc in \mathbb{C} , and $Q = -A/z$ (so that $dQ = Adz/z^2$), then \mathbb{A} is the set of rays from 0 to the nonzero points in the set $\langle \mathcal{R}, A \rangle \subset \mathbb{C}$, where the angled brackets denote the natural pairing between \mathfrak{t}^* and \mathfrak{t} . Further, $\mathcal{R}(d)$ is then the set of roots landing on the ray d (and in \mathbb{C}^*) under the map $\langle \cdot, A \rangle : \mathcal{R} \rightarrow \mathbb{C}$.

LEMMA 7.3. *Each of the sets $\mathcal{R}(d), \mathcal{R}(d, k)$ is a closed subset of some system of positive roots in \mathcal{R} , i.e. they are “special” in the sense of Borel [23, §IV.14.5].*

Proof. See [Appendix B](#). □

Thus if $U_\alpha = \exp(\mathfrak{g}_\alpha) \subset G$ is the root group corresponding to $\alpha \in \mathcal{R}$, it follows from [23, §IV.14.5] that $\{U_\alpha \mid \alpha \in \mathcal{R}(d)\}$ “directly spans” in any order a unipotent subgroup of G . This means that if we choose any total ordering of $\mathcal{R}(d)$ and consider the product map $\phi : \prod_{\alpha \in \mathcal{R}(d)} U_\alpha \rightarrow G$ (with the product taken in the chosen order), then ϕ is an algebraic isomorphism (of spaces,

not groups) onto its image, and this image is a well-defined subgroup of G independent of the chosen order of the factors.

Definition 7.4. The *Stokes group* Sto_d associated to the singular direction $d \in \mathbb{A}$ is the unipotent subgroup of G corresponding to $\mathcal{R}(d) \subset \mathcal{R}$:

$$\text{Sto}_d = \phi \left(\prod_{\alpha \in \mathcal{R}(d)} U_\alpha \right) \subset G.$$

It has dimension $\dim_{\mathbb{C}} \text{Sto}_d = \#\mathcal{R}(d)$ and has Lie algebra $\bigoplus_{\alpha \in \mathcal{R}(d)} \mathfrak{g}_\alpha \subset \mathfrak{g}$.

Similarly, for any integer k , define the level k Stokes group, $\text{Sto}_d(k)$, to be the image of $\prod_{\alpha \in \mathcal{R}(d,k)} U_\alpha$ in G and deduce (from the direct spanning property, again using [23, §IV.14.5]) that the product map gives an isomorphism of spaces:

$$\text{Sto}_d(k_1) \times \cdots \times \text{Sto}_d(k_r) \cong \text{Sto}_d.$$

(As a group, Sto_d is the semidirect product of the groups on the left, with $\text{Sto}_d(k_i)$ acting by conjugation on $\text{Sto}_d(k_j)$ for $i < j$.) Again since the root groups are one-dimensional, $\dim \text{Sto}_d(k) = \#\mathcal{R}(d, k)$. We will say that the level k is *effective* along direction d if $\mathcal{R}(d, k)$ is nonempty. (We leave it as an exercise to check that the above definitions do not change if we pass to a different Cartan subalgebra \mathfrak{t} containing each coefficient A_i of Q .)

Definition 7.5. The *space of Stokes data*, $\text{Sto}(Q)$, associated to Q is the product of all the Stokes groups:

$$(30) \quad \text{Sto}(Q) = \prod_{d \in \mathbb{A}} \text{Sto}_d.$$

(Here we do not take the image of the product in G .) The appearance of such spaces in the local classification of meromorphic connections will be described in [Appendix A](#).

7.1. Quasi-Hamiltonian structure on Stokes data. Now choose a singular direction $d_1 \in \mathbb{A}$ and label the other singular directions d_2, \dots, d_s so that d_{i+1} is next after d_i when turning in a positive sense, so that $\text{Sto}(Q) = \prod_1^s \text{Sto}_i$ where $\text{Sto}_i = \text{Sto}_{d_i}$. We will denote elements of Sto_i by S_i . (Beware: some references work with singularities at ∞ , so the notion of positive sense is reversed.) The aim of the rest of this section is to establish

THEOREM 7.6. *The space*

$$\mathcal{A}(Q) = G \times H \times \text{Sto}(Q)$$

is a quasi-Hamiltonian $G \times H$ -space with moment map $\mu : \mathcal{A}(Q) \rightarrow G \times H$ given by

$$\mu(C, h, S_1, \dots, S_s) = (C^{-1}hS_s \cdots S_2S_1C, h^{-1})$$

and two-form ω , where

$$(31) \quad 2\omega = (\bar{\gamma}, \text{Ad}_b \bar{\gamma}) + (\bar{\gamma}, \bar{\beta}) + (\bar{\gamma}_s, \eta) - \sum_{i=1}^s (\gamma_i, \gamma_{i-1})$$

with $\gamma_i = C_i^*(\theta)$, $\bar{\gamma}_i = C_i^*(\bar{\theta})$, $\eta = h^*(\theta_H)$, $\bar{\beta} = b^*(\bar{\theta})$, where $\theta, \bar{\theta}$ are the Maurer–Cartan forms on G (and $\theta_H, \bar{\theta}_H$ are the Maurer–Cartan forms on H), and $C_i = S_i \cdots S_1 C$, $b = h S_s \cdots S_2 S_1$.

The key strategy is that such spaces may be obtained by gluing simpler spaces of the form ${}_G \mathcal{A}_H^r$ for a nested sequence of reductive groups (and decreasing integers r). If we write $\mu = (\mu_G, \mu_H)$, the element $h = \mu_H^{-1} \in H$ is often referred to as the formal monodromy. (Clearly in general it is not conjugate in G to the local monodromy μ_G .)

7.2. Stokes data by level. To reorganise the Stokes data according to levels it is visually helpful to interpret it in terms of a G -local system on a punctured disc. In particular, this helps keep track of the various monodromy relations. (We will call this the “punctured disc model” of an irregular connection.) Identify Δ with the unit disc (centred at $z = 0$), and puncture it at the origin and at r equally spaced points along each anti-Stokes direction $d \in \mathbb{A}$, yielding a punctured disc Δ' . Thus Δ' is the union of a small punctured disk Δ_0 and concentric annuli $\text{Ann}_1, \text{Ann}_2, \dots, \text{Ann}_r$ (with increasing diameters) so that each annulus has exactly one puncture in each direction $d \in \mathbb{A}$. (We will refer to Ann_i as the “level- i annulus.”) Choose a direction $p \in S^1$ somewhere between d_s and d_1 (i.e. in a small negative sense from d_1). Choose a basepoint $* \in \Delta_0$ in the direction p .

Fix a point $(C, h, S_1, \dots, S_s) \in \mathcal{A}(Q)$, and recall that each Stokes multiplier $S_i \in \text{Sto}_i$ may be uniquely written as

$$S_i = S_i^1 S_i^2 \cdots S_i^r$$

with $S_i^j \in \text{Sto}_{d_i}(k_j)$. Thus we may define a homomorphism $\rho : \pi_1(\Delta', *) \rightarrow G$ from the fundamental group $\pi_1(\Delta', *)$ of Δ' based at $*$ by the formulae

$$\rho(\gamma_i^j) = S_i^j, \quad \rho(\gamma_0) = h,$$

where γ_0 is the loop in Δ_0 going once in a positive sense around 0, and the loop γ_i^j follows a positive arc around 0 in Δ_0 until just before d_i then follows a ray straight out until Ann_j , before making a small positive loop around the i th puncture on Ann_j and then retracing its steps back to $*$. The map ρ is well defined since these loops freely generate $\pi_1(\Delta', *)$.

Now let γ_r be the loop that goes out in direction p to the outer boundary of Δ , goes around the boundary once in a positive sense then returns to $*$ in the direction p . One may then check that we have

LEMMA 7.7.

$$(32) \quad \rho(\gamma_r) = hS_s \cdots S_2S_1.$$

Proof. For each i , the product $\widehat{\gamma}_i := \gamma_i^1 \cdots \gamma_i^r$ goes around to just before d_i out to $\partial\Delta$ around a positive arc just crossing d_i , back in to Δ_0 then back along a negative arc to $*$. Thus $\rho(\widehat{\gamma}_i) = S_i$. Next we observe that $\gamma_r = \gamma_0\widehat{\gamma}_s \cdots \widehat{\gamma}_1$, and so the result follows. \square

Next note that there is a nested chain of connected complex reductive subgroups

$$(33) \quad H = H_1 \subset H_2 \subset \cdots H_r \subset G$$

defined by $H_i = \text{Stab}(A_r, \dots, A_i)$, each a Levi subgroup of a parabolic of G . Said differently, for each index $i = r, r-1, \dots, 2, 1$, there is a vector space decomposition

$$\mathfrak{h}_{i+1} = \mathfrak{h}_i \oplus \mathfrak{h}'_i,$$

where $\mathfrak{h}_i = \text{Lie}(H_i)$ with $\mathfrak{h}_{r+1} = \mathfrak{g}$ by convention and $\mathfrak{h}'_i = \text{Im}(\text{ad}(A_i)|_{\mathfrak{h}_{i+1}}) = [A_i, \mathfrak{h}_{i+1}] \subset \mathfrak{h}_{i+1}$. Thus

$$(34) \quad \mathfrak{g} = \mathfrak{h} \oplus \mathfrak{h}'_1 \oplus \mathfrak{h}'_2 \oplus \cdots \oplus \mathfrak{h}'_r$$

and each root space \mathfrak{g}_α occurs in precisely one such component, and if $\mathfrak{g}_\alpha \subset \mathfrak{h}'_i$, then $\deg(q_\alpha) = k_i$. (In brief, \mathfrak{h}'_r is the sum of the root spaces on which A_r acts nontrivially, then \mathfrak{h}'_{r-1} is the sum of the remaining root spaces on which A_{r-1} acts nontrivially, etc.)

LEMMA 7.8. *If $\gamma \in \pi_1(\Delta', *)$ is a loop that does not stray into Ann_j , then $\rho(\gamma) \in H_j$.*

Proof. We have $h \in H_1$, so it is enough to check that $S_i^j \in H_{j+1}$ for all i, j . Now $S_i^j \in \text{Sto}_i(k_j)$, whose Lie algebra is spanned by root spaces \mathfrak{g}_α of certain roots α with $\deg(q_\alpha) = k_j$. Thus $\mathfrak{g}_\alpha \subset \mathfrak{h}'_j \subset \mathfrak{h}_{j+1}$, and so $\text{Sto}_i(k_j) \subset H_{j+1}$ as required. \square

Now we will pass to new generating loops of the fundamental group (still based at $*$). Define loops β_i^j going out in the direction p until the inner boundary of Ann_j , then around a positive arc until d_i , then around a small positive loop around the i th puncture of Ann_j , then retracing the same arc back around to p then back in to $*$. Then we define

$$B_i^j = \rho(\beta_i^j) \in G$$

to be the corresponding “twisted” Stokes multiplier.

LEMMA 7.9. *The twisted Stokes multiplier B_i^j is in $\text{Sto}_i(k_j)$.*

Proof. In the fundamental group we have $\beta_i^j = x^{-1}\gamma_j^i x$, where x is a loop not entering Ann_j . (Explicitly, $x = \widehat{\gamma}_{i-1}^j \cdots \widehat{\gamma}_2^j \widehat{\gamma}_1^j$, where $\widehat{\gamma}_k^j = \gamma_k^1 \gamma_k^2 \cdots \gamma_k^{j-1}$.) Thus $\rho(x) \in H_j$. Now we observe that H_j normalises $\text{Sto}_i(k_j)$ in G , i.e. $g \text{Sto}_i(k_j) g^{-1} = \text{Sto}_i(k_j)$ for any $g \in H_j$, which immediately implies the desired result, as $S_i^j \in \text{Sto}_i(k_j)$. To see this note that H_j is generated by T and the root groups U_α for roots α with $\mathfrak{g}_\alpha \subset \mathfrak{h}_j$. We must check that each U_α normalises $\text{Sto}_i(k_j)$ (since it is clear for T). For this, by [23, Prop. 14.5(3)], it is enough to check that any root of the form $\gamma = n\alpha + m\beta$ where $n, m \in \mathbb{Z}_{>0}$ and $\beta \in \mathcal{R}(d_i, k_j)$ is actually in $\mathcal{R}(d_i, k_j)$. This is clear however since q_α will have lower degree than q_β , and so the leading term of q_γ is m times that of q_β , which implies immediately that $\gamma \in \mathcal{R}(d_i, k_j)$. \square

Thus specifying all the Stokes multipliers $S_i^j \in \text{Sto}_i(k_j)$ is equivalent to specifying all the twisted Stokes multipliers $B_i^j \in \text{Sto}_i(k_j)$.

LEMMA 7.10. *In terms of the twisted Stokes multipliers the monodromy around the outer boundary of Δ is*

$$(35) \quad \rho(\gamma_r) = h(B_s^1 \cdots B_1^1)(B_s^2 \cdots B_1^2) \cdots (B_s^r \cdots B_1^r).$$

Proof. Let γ_i denote the loop that goes out along p to the outer boundary of Ann_i , around this boundary circle in a positive sense, then back to $*$ along p . The result will follow immediately from the inductive step:

$$\rho(\gamma_i) = \rho(\gamma_{i-1})B_s^i \cdots B_1^i.$$

In turn, this is easily established by drawing a picture of Ann_i . \square

Now if we define

$$h_i = \rho(\gamma_{i-1}) = h(B_s^1 \cdots B_1^1)(B_s^2 \cdots B_1^2) \cdots (B_s^{i-1} \cdots B_1^{i-1})$$

for each i , then $h_i \in H_i$ (since the corresponding loop does not enter Ann_i). Now define

$$\mathcal{A}(i) := H_{i+1} \times H_i \times \prod_{j=1}^s \text{Sto}_j(k_i),$$

and assume for the moment the following lemma.

LEMMA 7.11. *$\mathcal{A}(i)$ is a quasi-Hamiltonian $H_{i+1} \times H_i$ -space with moment map*

$$\mu_i(C_i, h_i, B_1^i, \dots, B_s^i) = (C_i^{-1} h_i B_s^i \cdots B_1^i C_i, h_i^{-1}),$$

where $C_i \in H_{i+1}$, etc.

Then Theorem 7.6 follows from the following proposition.

PROPOSITION 7.12. *There is an explicit isomorphism*

$$\mathcal{A}(Q) \cong \mathcal{A}(1) \underset{H_2}{\varepsilon\text{-}\mathfrak{A}} \cdots \underset{H_r}{\varepsilon\text{-}\mathfrak{A}} \mathcal{A}(r),$$

and so $\mathcal{A}(Q)$ is a quasi-Hamiltonian $G \times H$ -space.

Proof. The action of $(k, g) \in H_i \times H_{i+1}$ on $\mathcal{A}(i)$ is given by

$$(k, g)(C_i, h_i, B_1^i, \dots, B_s^i) = (kC_i g^{-1}, kh_i k^{-1}, kB_1^i k^{-1}, \dots, kB_s^i k^{-1}).$$

Since the action of H_i on $\mathcal{A}(i-1)$ is free, we can identify $\mathcal{A}(i) \underset{H_i}{\varepsilon\text{-}\mathfrak{A}} \mathcal{A}(i-1)$ with the subvariety of the product $\mathcal{A}(i) \times \mathcal{A}(i-1)$ where $C_{i-1} = 1$ and

$$h_i = h_{i-1} B_s^{i-1} \cdots B_1^{i-1}.$$

Thus we may remove both factors of H_i in the product to see $\mathcal{A}(i) \underset{H_i}{\varepsilon\text{-}\mathfrak{A}} \mathcal{A}(i-1)$ is isomorphic to

$$H_{i-1} \times H_{i+1} \times \prod_{j=1}^s \text{Sto}_j(k_{i-1}) \times \text{Sto}_j(k_i),$$

which is thus a quasi-Hamiltonian $H_{i+1} \times H_{i-1}$ -space with moment map

$$\left(C_i^{-1} h_{i-1} (B_s^{i-1} \cdots B_1^{i-1}) (B_s^i \cdots B_1^i) C_i, h_{i-1}^{-1} \right).$$

Repeating this gluing process yields the result. Note that the moment map on $\mathcal{A}(Q)$ is $(C^{-1} \rho(\gamma_r) C, h^{-1})$ where $C = C_r \in G, h = h_1 \in H$ and $\rho(\gamma_r)$ is as in (35), in terms of the twisted Stokes multipliers, or as in (32) in terms of the original Stokes multipliers. \square

The fact that the quasi-Hamiltonian two-form is given by the formula in the statement of Theorem 7.6 now follows from repeated use of the nesting result (Theorem 6.4). Finally Lemma 7.11 will be established.

Proof of Lemma 7.11. This is true since the spaces $\mathcal{A}(i)$ are isomorphic to higher fission spaces; there is an isomorphism

$$\mathcal{A}(i) \cong_{H_i} \mathcal{A}_{H_{i+1}}^{k_i}$$

as follows. First observe that $\mathcal{A}(i)$ is isomorphic to the space $\mathcal{A}(Q_i)$ attached to $Q_i = A_i/z^{k_i}$, where A_i is viewed as an element of the Cartan subalgebra \mathfrak{t} of \mathfrak{h}_{i+1} . To see this note that if $\deg(q_\alpha) = k_i$, then q_α equals $\alpha \circ Q_i$ plus less singular terms, and so the nontrivial Stokes groups occurring in the definition of $\mathcal{A}(i)$ are precisely those occurring in $\mathcal{A}(Q_i)$.

Thus we can reduce to the case of one level with $Q = Q_i, k = k_i, A = A_i, H = C_G(A)$, etc., and the aim is to show $\mathcal{A}(Q) = {}_G \mathcal{A}_H^k$. This is just (the parabolic extension of) [13, Lemmas 2.4 and A.3], and the proof is the same. Here is the idea, for completeness.

Recall the singular directions may be described as follows: each $d \in \mathbb{A}$ is supported by some root $\alpha \in \mathcal{R}$, and $d \in \mathbb{A}$ is supported by α if and only if

$q_\alpha = \alpha(A)/z^k$ is real and < 0 (for z in the direction d). Thus \mathbb{A} is invariant by rotation by π/k , and so $l := s/2k = \#\mathbb{A}/2k$ is integral. Define a “half-period” to be an ordered l -tuple of consecutive singular directions in \mathbb{A} .

LEMMA 7.13. *If $\mathbf{d} \subset \mathbb{A}$ is a half-period, then the subgroups $\{\text{Sto}_d \mid d \in \mathbf{d}\}$ directly span the unipotent radical of a parabolic subgroup of G with Levi subgroup H (and rotating \mathbf{d} by π/k yields the unipotent radical of the opposite parabolic with Levi subgroup H).*

Proof. The standard fact we wish to use is that any element $\lambda \in \mathfrak{t}_{\mathbb{R}}$ determines a parabolic subgroup $P_\lambda \subset G$ by defining

$$P_\lambda = \{g \in G \mid z^\lambda g z^{-\lambda} \text{ has a limit as } z \rightarrow 0 \text{ along any ray}\}.$$

Equivalently P_λ is generated by its Levi subgroup and its unipotent radical U_λ and, in turn, the Levi subgroup of P_λ is generated by T and the root groups U_α for all the roots with $\alpha(\lambda) = 0$, and U_λ is generated by the root groups U_α for all the roots α with $\alpha(\lambda) > 0$. Now let $\theta(\mathbf{d})$ be the ray bisecting the sector spanned by the half-period \mathbf{d} , and take

$$\lambda = -\text{Re}(Q(z)) \in \mathfrak{t}_{\mathbb{R}}$$

for any $z \neq 0$ on the ray $\theta(\mathbf{d})$. Then one notices that, for each root α , the “sine-wave function” $f_\alpha(\phi) = -\text{Re}(q_\alpha(z))\Big|_{z=\exp(i\phi)} : S^1 \rightarrow \mathbb{R}$ is either identically zero or has period $2\pi/k$ and is maximal on singular directions supported by α . Thus $f_\alpha(\theta(\mathbf{d})) = \alpha(\lambda)$ is strictly positive if and only if there is a singular direction supported by α within $\pi/2k$ of $\theta(\mathbf{d})$. Thus the roots supporting the directions $d \in \mathbf{d}$ are precisely those whose root groups generate U_λ . Further, the Levi subgroup of P_λ is just the centraliser of A . \square

Thus taking $\mathbf{d} = (d_1, \dots, d_l)$ yields a parabolic $P_+ \subset G$ with Levi subgroup H . Denote its unipotent radical U_+ , and let U_- be the unipotent radical of the opposite parabolic, associated to (d_{l+1}, \dots, d_{2l}) . Thus, in this one level case, we have a direct spanning equivalence

$$\mathcal{A}(Q) = G \times H \times \prod_1^s \text{Sto}_j \rightarrow {}_G\mathcal{A}_H^k = G \times H \times (U_+ \times U_-)^k$$

induced by the product isomorphisms

$$\text{Sto}_{(n+1)l} \times \cdots \times \text{Sto}_{nl+2} \times \text{Sto}_{nl+1} \rightarrow U_+$$

for $n \geq 0$ even (and to U_- for n odd). Thus by Corollary 6.2 $\mathcal{A}(Q)$ is quasi-Hamiltonian, as desired. \square

8. Irregular curves and associated Betti spaces

In this section we will define the notion of an irregular curve and show how to associate a quasi-Hamiltonian space to an irregular curve with some tangential basepoints and, in turn, how to canonically associate a Poisson variety to an irregular curve.

8.1. *Irregular curves.* Fix a connected complex reductive group G and a maximal torus $T \subset G$.

Definition 8.1. An “irregular curve” (or “wild Riemann surface”) is a smooth compact Riemann surface Σ (possibly with boundary) together with a finite number of distinct marked points a_1, a_2, \dots in the interior of Σ and an irregular type Q_i (in the sense of [Definition 7.1](#)) at each marked point.

For example, if the boundary is empty and each irregular type is zero, then an irregular curve is essentially the same thing as a smooth compact complex algebraic curve with some ordered marked points. (In general we will say an irregular curve is *algebraic* if its boundary is empty—it may still have marked points.) If m denotes the number of marked points plus the number of boundary components, we will always assume $m > 0$.

Given an irregular curve Σ , let $\widehat{\Sigma} \rightarrow \Sigma$ denote the real two-manifold with boundary obtained by taking the real oriented blow up of Σ at each marked point, i.e. replacing each marked point a_i with the circle of oriented real tangent directions at a_i . Label the boundary circles of $\widehat{\Sigma}$ as $\partial_1, \dots, \partial_m$. Thus Q_i determines a subgroup $H_i = C_G(Q_i) \subset G$, singular directions $\mathbb{A}_i \subset \partial_i$ and Stokes groups $\text{Sto}_d \subset G$ for each $d \in \mathbb{A}_i$, as in [Definitions 7.2 and 7.4](#) (where we set $Q_i = 0$ if ∂_i was already a boundary component of Σ).

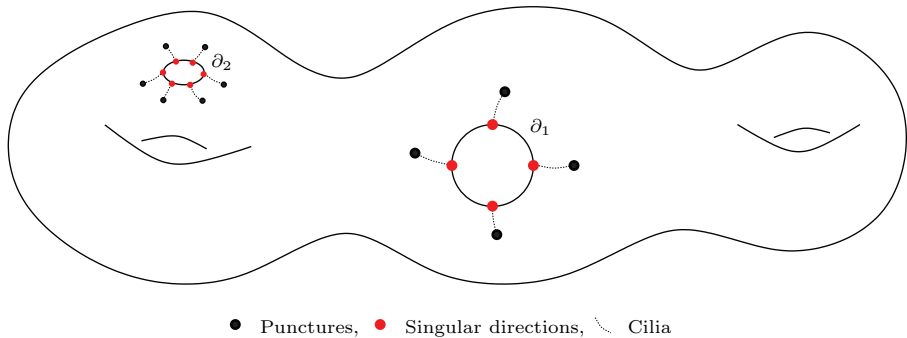
Now puncture $\widehat{\Sigma}$ once in its interior near each singular direction $d \in \mathbb{A}_i, i = 1, \dots, m$, and draw small cilia (eyelashes) on the surface $\widehat{\Sigma}$ between each puncture and the corresponding singular direction $d \in \mathbb{A}_i \subset \widehat{\Sigma}$ (such that none of the cilia cross). The cilia are just to help keep track of the punctures. Let $\widetilde{\Sigma} \subset \widehat{\Sigma}$ denote the corresponding punctured surface (see [Figure 4](#)).

Now choose a marked point $b_i \in \partial_i$ in each boundary component of $\widetilde{\Sigma}$, and define Π to be the fundamental groupoid of $\widetilde{\Sigma}$ based at $\{b_1, \dots, b_m\}$:

$$\Pi = \Pi_1(\widetilde{\Sigma}, \{b_1, \dots, b_m\}),$$

consisting of homotopy classes of paths γ in $\widetilde{\Sigma}$ such that the endpoints of γ are in the set $\{b_1, \dots, b_m\}$. (More precisely, the set of objects of Π is the finite set $\{b_1, \dots, b_m\} \subset \widetilde{\Sigma}$ and a morphism in Π from b_i to b_j is a homotopy class of paths in $\widetilde{\Sigma}$ starting at b_i and ending at b_j .)

Therefore we may consider the space $\text{Hom}(\Pi, G)$ of morphisms from the groupoid Π to the group G . (Recall a group is a groupoid with only one

Figure 4. The surface $\tilde{\Sigma}$.

object and by ‘morphism’ we mean a functor between the two corresponding categories.) Explicitly, an element $\rho \in \text{Hom}(\Pi, G)$ consists of a choice of an element $\rho(\gamma) \in G$ for each path γ in Π such that for composable paths γ_1, γ_2 , one has

$$\rho(\gamma_1 \circ \gamma_2) = \rho(\gamma_1)\rho(\gamma_2).$$

We will also refer to ρ as a “ G -valued representation of Π ”. Now consider the subspace

$$\text{Hom}_{\mathbb{S}}(\Pi, G) \subset \text{Hom}(\Pi, G)$$

of “Stokes representations” ρ obeying the following conditions (for any $i = 1, \dots, m$):

- (SR1) If $d \in \mathbb{A}_i$ and $\hat{\gamma}_d$ is any loop based at b_i that goes around (in any direction) ∂_i to the direction d , and then loops once around the puncture on the cilium emanating from the direction d (without crossing any other cilia), before retracing its path back to b_i , then $\rho(\hat{\gamma}_d) \in \text{Sto}_d$.
- (SR2) If γ_i is the simple closed loop based at b_i going once in a positive sense around ∂_i , then $\rho(\gamma_i) \in H_i$.

There is an action of the group $\mathbf{H} := H_1 \times \dots \times H_m \subset G^m$ on the space of Stokes representations as follows: $(k_1, \dots, k_m) \in \mathbf{H}$ sends ρ to the representation ρ' such that

$$\rho'(\gamma) = k_j \rho(\gamma) k_i^{-1}$$

for any path $\gamma \in \Pi$ from b_i to b_j .

THEOREM 8.2. *The space $\text{Hom}_{\mathbb{S}}(\Pi, G)$ of Stokes representations of Π in G is a smooth complex affine variety and is (canonically) a quasi-Hamiltonian \mathbf{H} -space, where $\mathbf{H} = H_1 \times \dots \times H_m \subset G^m$.*

Proof. First we will establish this in the case when Σ is a disk with one marked point in its interior. In this case, if we choose some paths generating Π , as for example in [Figure 1](#), with ∂_1 the inner boundary and ∂_2 the outer

boundary, and number the singular directions d_1, d_2, \dots, d_s correspondingly, then we obtain an isomorphism

$$\mathrm{Hom}_{\mathbb{S}}(\Pi, G) \cong \mathcal{A}(Q_1) = G \times H_1 \times \Pi_1^s \mathrm{Sto}_{d_i}.$$

This gives $\mathrm{Hom}_{\mathbb{S}}(\Pi, G)$ a quasi-Hamiltonian structure (by [Theorem 7.6](#)), and we should check that it is independent of the choice of generating paths. Draw a concentric circle \mathbb{H} through all the punctures. We only consider sets of generating paths of the following form

- (1) a path \mathcal{P} from b_2 to b_1 , only crossing \mathbb{H} once, between two punctures, which will then be labelled d_s, d_1 ,
- (2) a simple loop γ_0 based at b_1 around the inner boundary,
- (3) loops $\hat{\gamma}_d$ based at b_1 around the puncture in the direction d , so that none of the paths cross (so the paths look as in [Figure 1](#)).

Up to homotopy the only choice here is the path \mathcal{P} , and the choice for this path is the number of times it winds around before and after crossing \mathbb{H} , and the choice of where it crosses \mathbb{H} . The quasi-Hamiltonian structure is independent of these choices due to the automorphisms [\(26\)](#) and [\(27\)](#) (enabling one to undo the winding of \mathcal{P} on the inside and outside of \mathbb{H}) and the isomonodromy isomorphisms ([Propositions 5.1](#) and [6.3](#)) (enabling one to change the choice of where \mathbb{H} is crossed).

Now consider the general case. Removing disks around each marked point reduces to the case of a disk (already dealt with above) and the case with only trivial irregular types considered in [\[3\]](#). This yields an intrinsic quasi-Hamiltonian structure. To see it is a smooth affine variety, note that upon choosing appropriate generating paths we may identify $\mathrm{Hom}_{\mathbb{S}}(\Pi, G)$ with the reduction by G (at the identity value of the moment map) of the fusion product

$$(36) \quad \mathbb{D}^{\otimes g} \underset{G}{\otimes} \mathcal{A}(Q_1) \underset{G}{\otimes} \cdots \underset{G}{\otimes} \mathcal{A}(Q_m),$$

where \mathbb{D} is the internally fused double and g is the genus of Σ . Let μ_G denote the G component of the moment map, from [\(36\)](#) to G . Since $m \geq 1$, the action of G on [\(36\)](#) is free and so 1 is a regular value of μ_G (by [\[3, Prop. 4.1\(3\)\]](#)). Thus $\mu_G^{-1}(1)$ is a smooth subvariety of [\(36\)](#) with a free action of G and so the quotient is smooth (by Luna's slice theorem or otherwise). (The quasi-Hamiltonian reduction theorem applies to yield the structure of quasi-Hamiltonian \mathbf{H} -space.) Explicitly, if we write an element of $\mathcal{A}(Q_i) = G \times H_i \times \mathrm{Sto}(Q_i)$ as (C_i, h_i, \mathbf{S}^i) , then we may identify $\mu_G^{-1}(1)/G$ with the affine subvariety of [\(36\)](#) cut out by the equations $\mu_G = 1$ and $C_1 = 1$. In detail, if we write $\mathbb{D}^{\otimes g}$ as $\{(a_i, b_i) \mid a_i, b_i \in G, i = 1, \dots, g\}$, then the relation $\mu_G = 1$ takes the form

$$(37) \quad [a_1, b_1] \cdots [a_g, b_g] \mu_1 \cdots \mu_m = 1,$$

where $\mu_i = C_i^{-1} h_i \cdots S_2^i S_1^i C_i$ and $[a, b] = aba^{-1}b^{-1}$. \square

Recall (from [Remark 2.1](#)) that if \mathbf{H} is a torus, it follows that $\mathrm{Hom}_{\mathbb{S}}(\Pi, G)$ is an algebraic symplectic manifold. The special case of this when the leading coefficient of each irregular type is regular semisimple (so each chain of reductive groups [\(33\)](#) passes directly from G to T) was considered in [\[15\]](#). In the simple example of $\Sigma = \mathbb{P}^1$ with two marked points, and Q_1, Q_2 both with simple poles and regular semisimple coefficients, a covering of $\mathrm{Hom}_{\mathbb{S}}(\Pi, G)$ was identified with the Lu–Weinstein double symplectic groupoid in [\[15, Prop. 7\]](#).

A priori the space $\mathrm{Hom}_{\mathbb{S}}(\Pi, G)$ depends on the irregular curve Σ , the basepoints $\{b_i\}$ and the choice of the locations of the punctures used to define $\widetilde{\Sigma}$. By shrinking the cilia, pulling the punctures close to the boundary circles, one may canonically identify the different possible groupoids Π defined using different puncture locations. The next result shows that once we quotient by \mathbf{H} the result is independent of the basepoints as well.

COROLLARY 8.3. *The irregular curve Σ canonically determines the Poisson variety $\mathrm{Hom}_{\mathbb{S}}(\Pi, G)/\mathbf{H}$ of S -equivalence classes of Stokes representations.*

Proof. By [Proposition 2.8](#), upon choosing basepoints $\{b_i\}$ the quotient is well defined and a Poisson variety, so we just need to check that it is independent of this choice. Suppose we make two different choices $\{b_i\}, \{b'_i\}$ of basepoints. Choosing any path γ_i in ∂_i from b_i to b'_i (for each i) yields an isomorphism $\mathrm{Hom}_{\mathbb{S}}(\Pi, G) \cong \mathrm{Hom}_{\mathbb{S}}(\Pi', G)$ (where Π' is defined using $\{b'_i\}$). Choosing a different set of paths corresponds to conjugating this isomorphism by the action of an element of \mathbf{H} , by (SR2), and so the \mathbf{H} -invariant functions are canonically identified. \square

Analogously to Simpson [\[60, §6\]](#) we will sometimes refer to the geometric invariant theory quotient $\mathrm{Hom}_{\mathbb{S}}(\Pi, G)/\mathbf{H}$ as the “Betti moduli space” of the irregular curve Σ and denote it $\mathbf{M}_B(\Sigma)$. These varieties, or their symplectic leaves, will also sometimes be called “wild character varieties.” (See [\[58\]](#) and references therein for the usual case.)

Remark 8.4. By considering Stokes representations we are in effect considering a special class of G -local systems on $\widetilde{\Sigma}$, the *Stokes G -local systems*, defined as follows. Draw concentric circles (halos) \mathbb{H}_i on $\widetilde{\Sigma}$ near each boundary circle, through the corresponding punctures, as in the proof of [Theorem 8.2](#), thus determining a small annulus around each boundary circle, which we will refer to as the area *inside* of \mathbb{H}_i . Then a “Stokes G -local system” on $\widetilde{\Sigma}$ is a G -local system \mathbb{L} on $\widetilde{\Sigma}$ together with a flat reduction of structure group to H_i inside of \mathbb{H}_i for each $i = 1, \dots, m$ (i.e. an H_i -local system \mathbb{L}_i defined inside \mathbb{H}_i , such that $\mathbb{L} = \mathbb{L}_i \times_{H_i} G$ there) such that, for any basepoint inside \mathbb{H}_i , the local monodromy around the puncture corresponding to $d \in \mathbb{A}_i$ lies in $\mathrm{Sto}_d(Q_i)$. The space $\mathrm{Hom}_{\mathbb{S}}(\Pi, G)$ classifies Stokes G -local systems together with a framing of

\mathbb{L}_i at the basepoint b_i for each i . Section 7.2 may now be viewed as giving several equivalent descriptions of the category of Stokes G -local systems.

Remark 8.5. Note that the Betti space $\mathbf{M}_B(\Sigma)$ is independent of the labelling of the boundary components ∂_i by integers $1, \dots, m$. Further, it is straightforward to verify that $\mathbf{M}_B(\Sigma)$ only depends on each irregular type Q_i up to the action of the Weyl group $W = N_G(T)/T$ of G . More precisely, if for some i the irregular type Q_i is replaced by $Q'_i = \text{Ad}_w(Q_i)$ for some $w \in N_G(T)$, then there is a canonical isomorphism between the corresponding Betti spaces, independent of the choice of w .

Remark 8.6. More generally, one may consider “twisted” irregular types, defined by replacing the Cartan subalgebra $\mathfrak{t}((z)) \subset \mathfrak{g}((z))$ by a nonconjugate Cartan subalgebra (which exist since $\mathbb{C}((z))$ is not algebraically closed; cf. [42, Lemma 2]), and this yields a notion of “twisted” irregular curves, which will be studied elsewhere. Further, one may replace the constant group G by a local system of groups on $\Sigma \setminus \{a_i\}$ (e.g. as for twisted loop groups); this yields a more general notion of twisted irregular curve.

9. Stability of Stokes representations

Given an irregular curve Σ and some basepoints $\{b_i\}$, we have defined a smooth affine variety $\text{Hom}_{\mathbb{S}}(\Pi, G)$ with an action of a reductive group \mathbf{H} . This is a situation much studied in geometric invariant theory, and one defines the “stable” points as follows. Let $\mathbf{K} \subset \mathbf{H}$ be the subgroup of elements that act trivially on all points of $\text{Hom}_{\mathbb{S}}(\Pi, G)$ (the kernel of the action).

Definition 9.1 (see e.g. [54]). A point $\rho \in \text{Hom}_{\mathbb{S}}(\Pi, G)$ is stable if its orbit $\mathbf{H} \cdot \rho$ is closed and of dimension equal to $\dim(\mathbf{H}/\mathbf{K})$.

In this section we will assume that \mathbf{K} equals the centre of G embedded diagonally in \mathbf{H} . (One may check that this is the case unless the genus of Σ is zero, there is just one marked point and Q_1 has at most a simple pole; in such exceptional cases $\text{Hom}_{\mathbb{S}}(\Pi, G)$ is a point.)

Our first aim is to characterise the stable Stokes representations ρ in a more direct fashion, as follows. Suppose we have a parabolic subgroup $P_i \subset G$ for each basepoint b_i , $i = 1, \dots, m$, and write $\mathbf{P} = (P_1, \dots, P_m)$ for this collection of parabolic subgroups. We will say that \mathbf{P} is *compatible* with $\rho \in \text{Hom}_{\mathbb{S}}(\Pi, G)$ if

$$\rho(\gamma)P_i\rho(\gamma)^{-1} = P_j$$

for any path γ in $\widetilde{\Sigma}$ from b_i to b_j (for any i, j). Now let $Z_i \subset G$ be the identity component of the centre of H_i . Thus Z_i is a torus and the group H_i may be characterised as the centraliser of Z_i in G . We will say that \mathbf{P} is *invariant* if $Z_i \subset P_i$ for each i . Finally \mathbf{P} is *proper* if some P_i is a proper subgroup of G .

Definition 9.2. A representation $\rho \in \text{Hom}_{\mathbb{S}}(\Pi, G)$ is “reducible” if there is an invariant proper collection of parabolics compatible with ρ . Otherwise ρ is “irreducible”.

In this definition it makes no difference if we only consider maximal proper parabolic subgroups: ρ is reducible if and only if there is an invariant collection of parabolics \mathbf{P} compatible with ρ such that some (and hence all) $P_i \subset G$ is a maximal proper parabolic. We will establish the following.

THEOREM 9.3. *A point $\rho \in \text{Hom}_{\mathbb{S}}(\Pi, G)$ is stable if and only if it is irreducible.*

If there are no irregular singularities (each $Q_i = 0$), this follows from Theorem 4.1 of Richardson [54], who considered the diagonal conjugation action of G on G^N . On the other hand, if there is just one singularity $m = 1$, this follows from [54, Th. 14.1], considering the diagonal conjugation action of $H_1 \subset G$ on G^N . Further, if G is a general linear group, one can translate this into a problem involving quivers and appeal to King [43]. The general case however does not seem to follow from the results of either of [43], [54], but as in those articles, the result is again essentially “an exercise in the Hilbert–Mumford theorem”.

Proof. If H is any complex algebraic group let $Y(H)$ denote the set of one-parameter subgroups $\lambda : \mathbb{C}^* \rightarrow H$. Recall that any $\lambda \in Y(G)$ determines a parabolic subgroup

$$P_G(\lambda) = \{g \in G \mid \lim_{t \rightarrow 0} \lambda(t)g\lambda(t)^{-1} \text{ exists}\} \subset G.$$

The Hilbert–Mumford theorem implies (see [43, Prop. 2.5]) that $\rho \in \text{Hom}_{\mathbb{S}}(\Pi, G)$ is stable if and only if whenever $\lambda \in Y(\mathbf{H})$ and $\lim_{t \rightarrow 0} \lambda(t) \cdot \rho$ exists, then $\lambda \in Y(\mathbf{K})$. Thus given $\lambda \in Y(\mathbf{H})$ and ρ , it is important to determine if $\lim_{t \rightarrow 0} \lambda(t) \cdot \rho$ exists. Write $\lambda = (\lambda_1, \dots, \lambda_m)$ with $\lambda_i \in Y(H_i)$. Since $H_i \subset G$, there are parabolic subgroups $P_i := P_G(\lambda_i)$ of G for each i . Clearly if the limit exists, then $\rho(\gamma)$ should be in P_i for any loop γ based at b_i (since λ acts on $\rho(\gamma)$ by conjugation by λ_i); e.g. for each Stokes multiplier at a_i and the formal monodromy h_i . Now suppose $C = \rho(\gamma) \in G$ for some path between two distinct basepoints, say from b_2 to b_1 .

LEMMA 9.4. *Suppose that $C \in G$ and $\lambda_i \in Y(H_i)$ for $i = 1, 2$. Then $\lambda_1(t)C\lambda_2(t)^{-1}$ has a limit as $t \rightarrow 0$ if and only if λ_1 and λ_2 are conjugate in G and $CP_2C^{-1} = P_1$.*

Proof. If they are conjugate, say $\lambda_2 = g\lambda_1g^{-1}$, then the desired limit exists if and only if $CP_2C^{-1} = P_1$. Indeed $CP_2C^{-1} = CgP_1g^{-1}C^{-1}$ so that $CP_2C^{-1} = P_1$ if and only if $Cg \in P_1$, i.e. if and only if $\lambda_1(t)Cg\lambda_1^{-1}(t)$ has a limit as $t \rightarrow 0$. Thus, multiplying on the right by the constant g^{-1} , this

has a limit if and only if $\lambda_1(t)C\lambda_2(t)^{-1}$ has a limit as $t \rightarrow 0$. Conversely if the limit exists, and equals $C_0 \in G$ say, then, since the limit is a fixed point, $\lambda_1(t)C_0\lambda_2(t)^{-1} = C_0$ for all t , and so λ_1 and λ_2 are conjugate. Then as above, because the limit exists, $CP_2C^{-1} = P_1$. \square

Note that if $P_i = P_G(\lambda_i)$ for some $\lambda_i \in Y(H_i)$, then $Z_i \subset P_i$. Indeed if $z \in Z_i$ and $g \in P_i$, then $zgz^{-1} \in P_i$ (since z and λ_i commute) so $z \in N_G(P_i) = P_i$.

PROPOSITION 9.5. *Given $\rho \in \text{Hom}_{\mathbb{S}}(\Pi, G)$, then ρ is reducible if and only if there exists $\lambda \in Y(\mathbf{H})$ such that $\lambda \notin Y(\mathbf{K})$ and the limit $\lim_{t \rightarrow 0} \lambda \cdot \rho$ exists.*

Proof. If $\lim_{t \rightarrow 0} \lambda \cdot \rho$ exists, then taking $P_i = P_G(\lambda_i)$ gives a collection of parabolics \mathbf{P} . It is compatible with ρ by [Lemma 9.4](#), it is invariant by the remark after [Lemma 9.4](#), and it is proper since $\lambda \notin Y(\mathbf{K})$.

Conversely, suppose we are given ρ and a proper collection \mathbf{P} of invariant compatible parabolics. Then for each i , there is a maximal torus T_i of G such that

$$Z_i \subset T_i \subset H_i \cap P_i.$$

(For example, since Z_i is reductive, it is contained in a Levi subgroup L_i of P_i , so there is a maximal torus T_i of L_i containing Z_i ; T_i is also maximal in G and clearly $T_i \subset H_i = C_G(Z_i)$.) Choose a Borel subgroup B such that $T_1 \subset B \subset P_1$, i.e. so that P_1 is a standard parabolic (for this choice of T_1 and B). Then we may choose $\lambda_1 \in Y(T_1)$ so that $P_1 = P_G(\lambda_1)$. Now, due to the compatibility condition, P_i is conjugate in G to P_1 , and due to the conjugacy of maximal tori of P_1 ([\[23, 11.3\]](#)), we may simultaneously conjugate the pair $T_i \subset P_i$ to the pair $T_1 \subset P_1$. Thus for each $i \geq 2$, we may conjugate λ_1 to an element $\lambda_i \in Y(T_i)$ such that $P_G(\lambda_i) = P_i$. Hence we have constructed $\lambda = (\lambda_1, \dots, \lambda_m) \in Y(\mathbf{H})$ such that $\lambda(t) \cdot \rho$ has a limit as $t \rightarrow 0$ (via [Lemma 9.4](#)). Moreover $\lambda \notin Y(\mathbf{K})$ since each P_i is proper. \square

The result is now immediate from the Hilbert–Mumford theorem. \square

9.1. Stability and differential Galois groups.

COROLLARY 9.6. *Suppose ρ is a Stokes representation corresponding to a meromorphic connection A on a G -bundle on Σ° (as in [Section A.3](#)). Then ρ is stable if and only if the differential Galois group $\text{Gal}(A) \subset G$ of A is not contained in any proper parabolic subgroup of G .*

Proof. Define $G(\rho) \subset G$ to be the Zariski closure of the subgroup of G generated by the following elements:

- (1) $\rho(\gamma)$ for any loop γ in $\widetilde{\Sigma}$ based at b_1 ,
- (2) $\rho(\gamma_i)^{-1}t_i\rho(\gamma_i)$ for any path γ_i in $\widetilde{\Sigma}$ from b_1 to b_i and any element $t_i \in Z_i$ for any $i = 1, \dots, m$.

By [Theorem 9.3](#), ρ is not stable if and only if $G(\rho)$ is a subgroup of a proper parabolic $P_1 \subset G$. The Ramis–Schlesinger density theorem (cf. [\[53\]](#), [\[46, Th. III.3.11\]](#), [\[51, Th. 21\]](#)) says that $\text{Gal}(A)$ is the Zariski closure of the subgroup of G defined in the same way but with each torus Z_i replaced by the Ramis exponential torus $\mathbb{T}_i \subset T$ associated to Q_i . One may verify that \mathbb{T}_i is characterised as the smallest subtorus of T whose Lie algebra contains all the coefficients of Q_i . Thus $\mathbb{T}_i \subset Z_i$ (as Z_i has this property) so that $\text{Gal}(A) \subset G(\rho)$, and hence one direction of the corollary is clear. Conversely it is sufficient to verify that if $\mathbb{T}_i \subset P$, then $Z_i \subset P$ for any parabolic subgroup $P \subset G$. To see this first note that $C_G(\mathbb{T}_i) = C_G(Z_i) = H_i$ (since $\mathbb{T}_i \subset Z_i$, and conversely if $g \in C_G(\mathbb{T}_i)$, then g centralises the Lie algebra of \mathbb{T}_i and thus all the coefficients of Q_i). Thus if $T_\mu \subset G$ is any maximal torus containing \mathbb{T}_i , then T_μ is a maximal torus of H_i and so $Z_i \subset T_\mu$. Thus if $\mathbb{T}_i \subset P$, we can take T_μ to be in a Levi subgroup of P containing \mathbb{T}_i and deduce $Z_i \subset T_\mu \subset P$. \square

9.2. Sufficient stability conditions. Recall that for each marked point, $H_i \subset G$ is a reductive group containing the maximal torus T so that $\mathbf{H} \subset G^m$ is a reductive group with maximal torus $\mathbf{T} := T^m$. A conjugacy class $\mathcal{C} \subset \mathbf{H}$ is the same thing as a product $\mathcal{C}_1 \times \cdots \times \mathcal{C}_m$ of conjugacy classes $\mathcal{C}_i \subset H_i$. In this section we will show that if \mathcal{C} is sufficiently generic and $\rho \in M := \text{Hom}_{\mathbb{S}}(\Pi, G)$ has $\mu(\rho) \in \mathcal{C}$, then ρ is stable, where $\mu : M \rightarrow \mathbf{H}$ is the moment map. (In the general linear case this is related to the sufficient stability conditions of [\[10, §8\]](#). Some aspects are similar to [\[15, §6\]](#).)

Recall the Jordan decomposition (cf. [\[23\]](#)) that any element $h \in \mathbf{H}$ is conjugate to an element of the form $t \cdot u$ where $t \in \mathbf{T}$ and $u \in \mathbf{H}$ is unipotent and commutes with t (so that any conjugacy class of \mathbf{H} may be specified by choosing such elements t, u).

COROLLARY 9.7. *There is a Zariski open subset $\mathbf{T}^\circ \subset \mathbf{T}$ such that if $t \in \mathbf{T}^\circ$ and $\mu(\rho) \in \mathcal{C}$ and $t \cdot u \in \mathcal{C}$ for some unipotent $u \in \mathbf{H}$ commuting with t , then ρ is stable.*

Proof. We will actually prove a slightly stronger and more precise statement. Recall any connected complex reductive group G has a finite cover that is a product $Z(G)^\circ \times [G, G]$ of the identity component of the centre of G and the (semisimple) derived subgroup $[G, G]$, and there is a homomorphism

$$\text{pr}_G : G \rightarrow \overline{Z}(G)$$

from G onto the torus $\overline{Z}(G) := Z(G)^\circ / (Z(G)^\circ \cap [G, G])$. (For example, if $G = \text{GL}_n(\mathbb{C})$, this map is the determinant, onto \mathbb{C}^* , and the finite abelian group $Z(G)^\circ \cap [G, G]$ is the centre of $\text{SL}_n(\mathbb{C})$.) It follows that if $a, b, u \in G$ with u unipotent, then $\text{pr}_G(u) = 1$ and $\text{pr}_G(aba^{-1}b^{-1}) = 1$. Now recall (from [Theorem 8.2](#)) that M is isomorphic to the set of G -orbits in the subvariety $\mu_G =$

1 of $\mathbb{D}^{\otimes g} \otimes \mathcal{A}(Q_1) \otimes \cdots \otimes \mathcal{A}(Q_m)$, which is written explicitly in (37). (We have not set $C_1 = 1$ here.) Applying pr_G to both sides of (37) implies $\prod_1^m \text{pr}_G(t_i) = 1 \in \overline{Z}(G)$, where $t_i \in T$ is the i th component of $t \in \mathbf{T}$, which is conjugate to the semisimple part of h_i^{-1} . Thus t is in the kernel K of the surjective homomorphism of tori

$$(38) \quad \mathbf{T} \rightarrow \overline{Z}(G); \quad t \mapsto \prod \text{pr}_G(t_i).$$

Now we will define a Zariski open subset of K and show ρ is stable if t is in this subset. Suppose $P \subset G$ is a maximal standard proper parabolic subgroup (and so contains T), and choose Weyl group elements $\bar{w}_i \in N_G(T)/T$ for $i = 1, \dots, m$. Let $L = P/\text{Rad}_u(P)$ be the Levi factor of P , so there is a homomorphism $\text{pr}_L : L \rightarrow \overline{Z}(L)$ onto the torus $\overline{Z}(L)$ associated to L . Thus we may consider the surjective homomorphism

$$(39) \quad \mathbf{T} \rightarrow \overline{Z}(L); \quad t \mapsto \prod \text{pr}_L(\bar{w}_i(t_i)).$$

There are only a finite number of such maps (since the Weyl group and the number of standard parabolics is finite). Let $\mathbf{T}^\circ \subset \mathbf{T}$ denote the complement of the kernels of all of the maps (39). Since P is a proper subgroup, $\dim(\overline{Z}(L)) > \dim(\overline{Z}(G))$, and so the kernel of each map (39) is of smaller dimension than the kernel K of (38), and so $\mathbf{T}^\circ \cap K$ is Zariski open in K . The precise statement we will prove is

COROLLARY 9.8. *Suppose $t \in \mathbf{T}^\circ \cap K$, i.e. t is in the kernel of (38), but not in the kernel of any of the maps (39). Then ρ is stable.*

(The original statement is correct, but vacuous if the centre of G has positive dimension). To prove this note that if ρ is not stable, then there is a (maximal) proper parabolic $P \subset G$ such that all the elements $C_i^{-1}h_iC_i, C_i^{-1}S_j^iC_i, a_k, b_k$ are in P . Using the G -action we may assume P is standard (and thus contains T). Let $\text{pr}_P : P \rightarrow \overline{Z}(L)$ be the map obtained by composing the canonical projection $P \rightarrow L$ with pr_L . Applying pr_P to the relation $\mu_G = 1$ implies $\prod \text{pr}_P(C_i^{-1}h_iC_i) = 1 \in \overline{Z}(L)$, noting that usually $C_i \notin P$. Now the semisimple part of h_i is conjugate (in G) to t_i^{-1} (recalling that the moment map for H_i is h_i^{-1}). Thus the semisimple part of $C_i^{-1}h_iC_i$ is conjugate in P to an element of the form $\bar{w}_i(t_i^{-1}) \in T$ for some Weyl group element $\bar{w}_i \in N_G(T)/T$. Thus $\prod \text{pr}_L(\bar{w}_i(t_i)) = 1 \in \overline{Z}(L)$, and so t is in the kernel of one of the maps (39). \square

9.3. Examples of well-behaved quotients. Let $\mathcal{C} \subset \mathbf{H}$ be a semisimple conjugacy class that is generic in the sense of Corollary 9.8. Let $\mu : \text{Hom}_{\mathbb{S}}(\Pi, G) \rightarrow \mathbf{H}$ be the moment map, and let $\mathbf{G} := \mathbf{H}/\mathbf{K}$.

COROLLARY 9.9. (1) *The subvariety $\mu^{-1}(\mathcal{C}) \subset \text{Hom}_{\mathbb{S}}(\Pi, G)$ is a smooth affine variety.*

(2) There is a saturated open subset $\mathcal{U} \subset \mu^{-1}(\mathcal{C})$ such that the quotient \mathcal{U}/\mathbf{H} is a smooth algebraic symplectic manifold (over which \mathcal{U} is a principal \mathbf{G} -bundle), and this quotient coincides with the set theoretic quotient.

(3) If $G = \mathrm{GL}_n(\mathbb{C})$, then we may take $\mathcal{U} = \mu^{-1}(\mathcal{C})$ in (2) so that $\mu^{-1}(\mathcal{C})/\mathbf{H}$ is a smooth affine algebraic symplectic manifold.

Proof. Let $\mathcal{C}' \subset \mathbf{H}$ be the inverse conjugacy class. (If $h \in \mathcal{C}'$, then $h^{-1} \in \mathcal{C}$.) Consider the fusion

$$(40) \quad \mathrm{Hom}_{\mathbb{S}}(\Pi, G) \otimes \mathcal{C}'.$$

Let $\hat{\mu}$ be the corresponding moment map from (40) to \mathbf{H} . As a variety, (40) is just the product, and so it is a smooth affine variety since semisimple conjugacy classes are affine. Now consider the affine subvariety $\hat{\mu}^{-1}(1)$. It is \mathbf{H} -equivariantly isomorphic to $\mu^{-1}(\mathcal{C})$, and so every point is stable. Firstly this implies every orbit is closed, and so the geometric invariant theory quotient coincides with the set-theoretic quotient. Stability also implies \mathbf{G} acts on $\hat{\mu}^{-1}(1)$ with finite stabilisers and so implies the following.

LEMMA 9.10. $\hat{\mu}^{-1}(1)$ is a smooth affine variety.

Proof. First suppose G has finite centre, so \mathbf{K} is finite and \mathbf{H} acts with finite stabilisers. Then, given any $p \in \hat{\mu}^{-1}(1)$, Proposition 4.1(3) of [3] implies $d\hat{\mu}_p$ is surjective, as in the usual Hamiltonian story. (The proof in [3] is for compact groups, but it works provided $\hat{\mu}(p) \in \mathbf{H}$ is semisimple, as is the case here.) So 1 is a regular value of $\hat{\mu}$ and the lemma follows. In general, let $\tilde{\mathbf{G}} = \mathbf{H}/\mathbf{K}^\circ$, where \mathbf{K}° is the identity component. Then (40) is also a quasi-Hamiltonian $\tilde{\mathbf{G}}$ space with moment map $\tilde{\mu} := \pi \circ \hat{\mu}$, where $\pi : \mathbf{H} \rightarrow \tilde{\mathbf{G}}$ is the projection. The above argument shows $\tilde{\mu}^{-1}(1)$ is a smooth affine variety. We claim $\hat{\mu}^{-1}(1) \cong \mu^{-1}(\mathcal{C})$ is the union of some connected components of $\tilde{\mu}^{-1}(1)$, and so the result follows. To establish the claim note that $(\rho, c) \in \tilde{\mu}^{-1}(1)$ if and only if $(\rho, z \cdot c) \in \hat{\mu}^{-1}(1)$ for some $z \in \mathbf{K}^\circ$, i.e. if and only if $\mu(\rho) = zc$ for some $c \in \mathcal{C}$, $z \in \mathbf{K}^\circ$. Then it follows as in Corollary 9.7 that z is in the kernel of the map (38). But (38) restricts to an isogeny $\varphi : \mathbf{K}^\circ \rightarrow \overline{Z}(G)$ (noting that $Z(G)^\circ \cong \mathbf{K}^\circ \subset \mathbf{T}$), so z is in the fixed finite abelian group $\mathrm{Ker}(\varphi)$. \square

Since \mathbf{G} acts with at most finite stabilisers, it follows that $\hat{\mu}^{-1}(1)/\mathbf{G} = \hat{\mu}^{-1}(1)/\mathbf{H}$ is an orbifold. On the other hand, it is an easy consequence (see [31, Prop. 5.7]) of Luna's slice theorem [47] that the subset $\mathcal{U} \subset \hat{\mu}^{-1}(1)$ of points where \mathbf{G} acts with trivial stabilisers has the following properties:

- (1) it is a saturated open subset;
- (2) \mathcal{U}/\mathbf{G} is smooth;
- (3) \mathcal{U} is a principal \mathbf{G} -bundle over \mathcal{U}/\mathbf{G} (étale locally trivial) and so, in particular, the action of \mathbf{G} on \mathcal{U} is (scheme-theoretically) free ([31, p. 17]).

Finally if $G = \mathrm{GL}_n(\mathbb{C})$, we should check that the stabiliser in \mathbf{H} of any stable Stokes representation is $\mathbf{K} \cong \mathbb{C}^*$ (the centre of G embedded diagonally in \mathbf{H}). But this follows easily, as in the world of quiver representations (cf. e.g. [69, Prop. 2.6]), so we leave it as an exercise. \square

Part (3) is reassuring since the irregular Riemann–Hilbert correspondence and [10] show that, if nonempty, such spaces are complete hyperkähler manifolds. (One may check that the complex symplectic forms match up as in [12], [15].)

Remark 9.11. Such results go back at least to Gunning [36, §9] in the nonsingular case, where one explicitly differentiates the defining relation. (See also Weil [65] which includes punctures.) The quasi-Hamiltonian approach avoids this and extends to the irregular case. It is modelled on the case of symplectic (Marsden–Weinstein) quotients, which are treated algebraically, for example, in [25]. (The subset \mathcal{U} of stable representations with stabiliser \mathbf{K} is the analogue of the “good” representations in the usual setup; [40, p. 57].)

Remark 9.12. Given this explicit description it is easy to write down a formula for the (complex) dimension of the symplectic manifolds in part (2) or (3) of Corollary 9.9, assuming they are nonempty. Let $r = \dim(T)$ be the rank of G , and let $\mathcal{R} \subset \mathfrak{t}^*$ denote the roots of G . Given an irregular type Q , we have

$$\dim \mathcal{A}(Q) = \dim(G) + \dim(H) + \sum_{\alpha \in \mathcal{R}} \deg(\alpha \circ Q),$$

where $\dim(H) = r + \#\{\alpha \in \mathcal{R} \mid \deg(\alpha \circ Q) = 0\}$. Then given an irregular curve Σ with irregular types Q_1, \dots, Q_m ,

$$\dim \mathrm{Hom}_{\mathbb{S}}(\Pi, G) = (2g - 2) \dim(G) + \sum_1^m \dim \mathcal{A}(Q_i)$$

and, in turn, given $\mathcal{C} \subset \mathbf{H} = H_1 \times \dots \times H_m$,

$$\dim(\mathrm{Hom}_{\mathbb{S}}(\Pi, G) //_{\mathcal{C}} \mathbf{H}) = \dim \mathrm{Hom}_{\mathbb{S}}(\Pi, G) + \dim \mathcal{C} - 2(\dim \mathbf{H} - \dim Z(G))$$

where $Z(G)$ is the centre of G . For example, suppose Q_i has a pole of order r_i and if $r_i = 0$, the corresponding conjugacy class $\mathcal{C}_i \subset G$ is regular semisimple. Suppose the nonzero Q_i have regular leading term (as in [15]). Then (41) equals

$$(42) \quad (2g - 2) \dim(G) + 2 \dim Z(G) + (\dim(G) - r)(m + \sum r_i).$$

Upon specialising further to $g = 0$ and $G = \mathrm{GL}_2(\mathbb{C})$, this equals $2(m + \sum r_i) - 6$ so, for example, one obtains moduli spaces of complex dimension two when

$$(m, r_1, r_2, \dots) = (4, 0, 0, 0, 0), (3, 1, 0, 0), (2, 1, 1), (2, 2, 0), (1, 3),$$

as is well known in the theory of Painlevé equations. (These examples provided early motivation; cf. [12].)

9.4. *Irregular Deligne–Simpson problem.* Having defined and studied the notion of irreducible Stokes representations we can define the irregular analogue of the Deligne–Simpson problem in the present context. Given an irregular curve Σ with marked points a_i and irregular types Q_i (for $i = 1, \dots, m$) as above, choose a conjugacy class

$$\mathcal{C}_i \subset H_i$$

for each i , where $H_i = C_G(Q_i)$ as usual. Let γ_i be the simple loop based at b_i going once in a positive sense around the i th boundary component ∂_i of $\widetilde{\Sigma}$ (as in (SR2)).

Question (iDS): For which choices of conjugacy classes \mathcal{C}_i does there exist an *irreducible* Stokes representation

$$\rho \in \text{Hom}_{\mathbb{S}}(\Pi, G)$$

such that $\rho(\gamma_i) \in \mathcal{C}_i$ for each i ?

The original Deligne–Simpson problem is on the Riemann sphere with G a general linear group and all the irregular types zero. We will make some conjectures in some irregular cases (again on the Riemann sphere with G a general linear group) in [21].

The collection $(\mathcal{C}_1, \dots, \mathcal{C}_m)$ of conjugacy classes is just a conjugacy class for the group \mathbf{H} . Let $\mathcal{C} \subset \mathbf{H}$ be the inverse conjugacy class, so a solution of the irregular Deligne–Simpson problem means that there are stable points in the subset

$$\mu^{-1}(\mathcal{C}) \subset \text{Hom}_{\mathbb{S}}(\Pi, G)$$

since $\rho(\gamma_i) = h_i$ is the inverse of the H_i component of the moment map. Thus the reduction $\mu^{-1}(\mathcal{C})^{\text{stable}}/\mathbf{H}$ of the space of such stable points by \mathbf{H} is nonempty. If G is a general linear group then, via the irregular Riemann–Hilbert correspondence, such reductions are isomorphic to some of the hyperkähler manifolds of [10]. (Specifically, the cases here correspond to setting $\text{Re}(\lambda_i) = 0$ in [10] so that stability is equivalent to irreducibility.) Thus the irregular Deligne–Simpson problem translates into the problem of characterising when certain hyperkähler manifolds are nonempty.

Remark 9.13. Kostov recently studied [44] an “additive Deligne–Simpson problem for non-Fuchsian systems,” apparently suggested by Y. Haraoka. This is not the additive analogue of our irregular Deligne–Simpson problem.⁵ In fact,

⁵[44] looks at the orbits of the residues rather than the orbits of the residues of the formal normal form. The multiplicative analogue of the problem of [44] would be to fix conjugacy

some cases of the additive analogue of our problem have been studied (and solved) earlier in [17] (see also [16], [20]). As mentioned above the motivation for our version of the problem is from the complex symplectic/hyperkähler moduli spaces of [12], [10] appearing in the wild/irregular extension of non-abelian Hodge theory.

Part (2) of Corollary 9.9 suggests that for general groups, a modified question ($i\text{DS}^+$) should also be considered: For which choices of conjugacy classes \mathcal{C}_i is there a solution ρ of $i\text{DS}$ such that the stabiliser of ρ in \mathbf{H} is minimal (i.e. equal to \mathbf{K})?

10. Admissible deformations of irregular curves

Given an irregular curve Σ we have defined a Poisson variety $\mathbf{M}_B(\Sigma) = \text{Hom}_{\mathbb{S}}(\Pi, G)/\mathbf{H}$. The aim of this section is to define the notion of an “admissible deformation” of Σ over a base \mathbb{B} and to show that the corresponding Poisson varieties fit together into the fibres of a fibre bundle with a canonical (complete) flat connection preserving the Poisson structures. This leads to an algebraic Poisson action of the fundamental group of \mathbb{B} on the fibre $\text{Hom}_{\mathbb{S}}(\Pi, G)/\mathbf{H}$. We view this as the irregular analogue of the well-known mapping class/braid group actions on the character varieties.

Recall that, given a fixed connected complex reductive group G with maximal torus T , an (algebraic) irregular curve is a smooth compact algebraic curve Σ with distinct marked points $a_1, \dots, a_m \in \Sigma$ and an irregular type Q_i at each marked point. Now define a *family of irregular curves* over a (smooth) base \mathbb{B} to be a smooth family of curves

$$\pi : \Sigma \rightarrow \mathbb{B}$$

so that each fibre $\Sigma_p = \pi^{-1}(p)$ is a curve (for $p \in \mathbb{B}$), with global sections $a_1, \dots, a_m : \mathbb{B} \rightarrow \Sigma$ (representing marked points of each fibre) and a smoothly varying family of irregular types Q_i .

Definition 10.1. An “admissible deformation” of an irregular curve Σ_0 , consists of a family of irregular curves (with one fibre isomorphic to Σ_0) such that (1) each fibre Σ_p is smooth, (2) the marked points remain distinct, and (3) for any $i = 1, \dots, m$ and any root $\alpha \in \mathcal{R}$ the order of the pole of

$$\alpha \circ Q_i$$

does not change.

classes of the local monodromy around singular points, rather than the conjugacy classes of the *formal* monodromy as we do here. These two notions coincide in the regular singular case.

Here $\mathcal{R} \subset \mathfrak{t}^*$ denotes the roots of G relative to T , and if α is a root, then $\alpha \circ Q_i$ is a germ of a meromorphic function (well defined modulo holomorphic functions) and its pole order is an integer ≥ 0 . The simplest examples of admissible deformations of an irregular type $Q = A_r/z^r + \cdots$ were considered previously in [39] for GL_n and in [13] for other G ; they occur if all the terms are arbitrary except the leading coefficient A_r , which is restricted to be regular, i.e. so that $\alpha(A_r) \neq 0$ for all roots α . In other words, all deformations of the coefficients are admissible, provided $A_r \in \mathfrak{t}$ stays off of all of the root hyperplanes. Thus on a disk the space of such deformations is homotopy equivalent to $\mathfrak{t}_{\mathrm{reg}} = \{A \in \mathfrak{t} \mid \alpha(A) \neq 0 \text{ for all roots } \alpha\}$, whose fundamental group is the (pure) G -braid group. This brings the G -braid groups into play, much as deformations of curves with marked points involves mapping class groups and the usual Artin braid groups. For example, one can show ([13, Th. 3.6]) that this gives the geometric origins of the quantum Weyl group (which was constructed directly by Lusztig, Soibelman and Kirillov–Reshetikhin by verifying explicit generators satisfied the desired relations). Here we will consider general admissible deformations so that the fundamental group of the space of admissible deformations will be more complicated.

Let $\pi : \Sigma \rightarrow \mathbb{B}$ be an admissible family of irregular curves, and for any $p \in \mathbb{B}$, let M_p denote the Poisson variety $\mathrm{Hom}_{\mathbb{S}}(\Pi, G)/\mathbf{H}$ associated to the irregular curve Σ_p .

THEOREM 10.2. *The varieties M_p assemble into a local system of Poisson varieties over \mathbb{B} .*

This means that there is a fibre bundle $\mathrm{pr} : M \rightarrow \mathbb{B}$ such that $\mathrm{pr}^{-1}(p) = M_p$ for any $p \in \mathbb{B}$, and for any points $p, q \in \mathbb{B}$ and path γ in \mathbb{B} from p to q , there is a canonical algebraic Poisson isomorphism $M_p \cong M_q$, only dependent on the homotopy class of γ . Equivalently, there is a covering $\mathcal{U} = \{U_i \mid i \in I\}$ of \mathbb{B} by contractible open sets (with contractible pairwise intersections), indexed by some set I , such that if $i \in I$ and $p, q \in U_i$, then there is a canonical Poisson isomorphism $\phi_{qp}^{(i)} : M_p \cong M_q$ and if $p \in U_i, q \in U_j, r \in U_i \cap U_j$, then the isomorphism

$$\phi_{qr}^{(j)} \circ \phi_{rp}^{(i)} : M_p \cong M_q$$

does not depend on the choice of r in the two-fold intersection (thus enabling us to define M as a bundle with constant, Poisson, clutching maps).

Proof. The crucial point is that, modulo some direct spanning equivalences, on \mathbb{B} one may locally use the “same” generating paths for the fundamental groupoids Π , thereby identifying nearby fibres M_b with the same explicit Poisson variety, built out of the fission spaces and internally fused doubles. (From Lemma 6.1 we know the direct spanning equivalences induce

Poisson isomorphisms.) This gives local trivialisations of M , over an open cover. The clutching maps are constant Poisson isomorphisms since on each pairwise intersection they come from making a different choice of generating paths.

To make this precise we should first check carefully that using the “same generating paths” does indeed lead to direct spanning equivalences. This is local at a singularity, so we consider the unit disk Δ with an irregular type Q at 0 and choose generating paths as in Figure 1. Then under a small admissible deformation the singular directions will move and may break up into more singular directions. In effect, the punctures along the singular directions may split into more punctures, but since everything is smooth, for sufficiently small deformations all the new punctures stay inside the chosen loops. We claim that the resulting Stokes groups (inside each loop) are direct spanning equivalent to the initial Stokes groups (and that no other truly new singular directions appear, e.g. outside the chosen loops). However this is clear from the definition of the Stokes groups and of admissible deformations: each root α supports $\deg(q_\alpha)$ punctures, and they vary continuously with Q .

Finally, to make sense of the notion of the “same” generating paths, note that in a neighbourhood of any point of \mathbb{B} we can choose local coordinates near each marked point on Σ (so that in each such coordinate nothing is moving except the singular directions). Then we may use these coordinates to make the punctures to define $\tilde{\Sigma}$. (And as previously remarked, for different coordinate choices the resulting groupoids Π may be canonically identified.) Then we just choose the neighbourhoods in \mathbb{B} small enough so the same loops may be used (up to direct spanning equivalence), as in Figure 5. \square

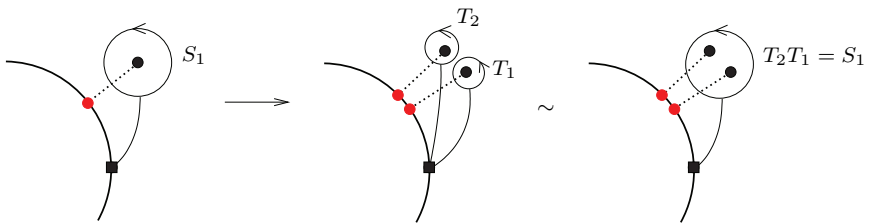


Figure 5. Using the same loop, modulo direct spanning equivalence.

Thus, roughly speaking the isomonodromy connection is defined by keeping the local products of Stokes multipliers constant (as in Jimbo–Miwa–Ueno [39] and the extension to other groups in [13]). This situation is analogous to the action of the mapping class group of a Riemann surface on its spaces of fundamental group representations (via outer automorphisms of the fundamental group). Indeed in the nonsingular case ($m = 0$), such results go back

at least to Goldman [35]. When the most singular coefficients of each irregular type are regular semisimple an analytic version of this was proved in [12], and an algebraic approach appears in [67], [45], [13] (in increasing generality). The notion of “local system of schemes” was introduced by Simpson [60, §6], where it was shown that moduli spaces of representations of fundamental groups of smooth projective varieties form local systems of schemes when the varieties move in families.

Remark 10.3. Note that set-theoretically the same argument shows that a path in \mathbb{B} from p to q yields a canonical bijection between the set of \mathbf{H} orbits in $\text{Hom}_{\mathbb{S}}(\Pi(p), G)$ and in $\text{Hom}_{\mathbb{S}}(\Pi(q), G)$ (not just at the level of S -equivalence classes), where $\Pi(p)$ is the groupoid attached to Σ_p (for any choice of basepoints) and similarly for q .

10.1. *Example.* If the underlying curve itself stays fixed, then there is a stronger statement, since we may use the same basepoints. For example, suppose G is semisimple and let Q_0 be an irregular type at the origin of the unit disk $\Sigma = \Delta$, and let \mathbb{B} be the set of all admissible deformations of Q_0 (fixing the origin) so that

$$(43) \quad \mathbb{B} = \{Q \in \mathfrak{t}((z))/\mathfrak{t}[[z]] \mid \text{PoleOrder}(\alpha \circ Q) \\ = \text{PoleOrder}(\alpha \circ Q_0) \text{ for all roots } \alpha\}.$$

Thus, for example, if $Q_0 = A/z^r$ with A regular semisimple, then \mathbb{B} is homotopy equivalent to $\mathfrak{t}_{\text{reg}}$, and so the fundamental group of \mathbb{B} is the pure G -braid group, for any $r \geq 1$. Fix basepoints $b_1, b_2 \in \partial\widehat{\Sigma}$ as usual, and for any $p \in \mathbb{B}$, let $\widetilde{\Sigma}_p \subset \widehat{\Sigma}$ be the corresponding punctured surface, and let $\Pi_p = \Pi_1(\widetilde{\Sigma}_p, \{b_1, b_2\})$ be the corresponding fundamental groupoid. The argument of the proof of [Theorem 10.2](#) establishes the following (now at the quasi-Hamiltonian, rather than Poisson, level).

THEOREM 10.4. *The spaces $\text{Hom}_{\mathbb{S}}(\Pi_p, G)$ assemble into a local system of quasi-Hamiltonian spaces over \mathbb{B} .*

Explicitly, given two irregular types $Q, Q' \in \mathbb{B}$, then each path in \mathbb{B} from Q to Q' determines an algebraic isomorphism $\text{Hom}_{\mathbb{S}}(\Pi_Q, G) \cong \text{Hom}_{\mathbb{S}}(\Pi_{Q'}, G)$ relating the quasi-Hamiltonian structures and only depends on the homotopy class of the path. This yields an (nonlinear) action of the fundamental group $\pi_1(\mathbb{B}, Q)$ of the base on the fibre $\text{Hom}_{\mathbb{S}}(\Pi_Q, G)$.

For example, if $H = C_G(Q)$ is abelian, then the quotient $\text{Hom}_{\mathbb{S}}(\Pi_Q, G)/G$ (just forgetting the framing on the outer boundary) is actually Poisson and $\pi_1(\mathbb{B}, Q)$ acts preserving the Poisson structure. If further $Q = A/z$, then up to a covering, $\text{Hom}_{\mathbb{S}}(\Pi_Q, G)/G$ is isomorphic [11], [13] to the Poisson Lie group dual to G ; the computation of this nonlinear Poisson action appears in [13],

and explicit formulae appear in [14] (end of §3) for $G = \mathrm{GL}_n(\mathbb{C})$ —and, as explained there, in the case of $\mathrm{GL}_3(\mathbb{C})$ this action corresponds to the global monodromy of the Painlevé VI differential equation.

Remark 10.5. Although the above example assumed G was semisimple, in order to ensure the “universal” local deformation space (43) was finite dimensional, this restriction is not necessary. In fact it, is sometimes important not to make this restriction. For example, in the case $G = \mathbb{C}^*$, the infinite-dimensional space of admissible deformations corresponds to the infinite number of “times” in many integrable hierarchies. One can see this in several ways:

- (1) the so-called Baker-Akhiezer functions are solutions of the corresponding irregular connections (see e.g. [55] and references therein), or
- (2) upon inverting the local coordinate z , the element e^Q is the same as the element $\exp(xz + t_2z^2 + t_3z^3 + \dots)$ on page 9 of Segal–Wilson [56].

Remark 10.6. (Full braid groups and bare curves.) Since the Betti spaces do not depend on the ordering of the marked points and only depend on the Weyl group orbit of each irregular type (cf. Remark 8.5), one can consider slightly more general deformations as follows. Define a “bare irregular type” to be an irregular type defined modulo the Weyl group W , i.e. an element $\overline{Q} \in (\mathfrak{t}(\widehat{\mathcal{K}})/\mathfrak{t}(\widehat{\mathcal{O}}))/W$. In turn, a “bare irregular curve” is a curve Σ with an unordered finite set of marked points $S \subset \Sigma$ and a bare irregular type \overline{Q}_s at each point $s \in S$. Thus any irregular curve Σ has an underlying bare irregular curve $\overline{\Sigma}$, and the Betti moduli space $\mathbf{M}_B(\Sigma)$ is determined by $\overline{\Sigma}$. An admissible family of bare irregular curves then consists of a family $\pi : \Sigma \rightarrow \mathbb{B}$ of smooth curves and a multisection, i.e. a subvariety $S \subset \Sigma$ finite étale over \mathbb{B} , and a bare irregular type \overline{Q}_s for each $s \in S \cap \pi^{-1}(b)$, $b \in \mathbb{B}$, such that locally over \mathbb{B} each \overline{Q}_s is the W -orbit of an admissible family of irregular types Q_s . Theorem 10.2 extends immediately to show that the associated Betti spaces form a local system of Poisson varieties over \mathbb{B} for any admissible family of bare irregular curves (since any such family is locally isomorphic to an admissible family of irregular curves). However the framed version Theorem 10.4 does not extend without some further choices (such as a pointwise lift of W to $N(T)$); cf. [13, Lemma 3.5] for an example.

Appendix A. Stokes data from connections

This appendix summarises some results about the classification of meromorphic connections on curves. Most of these results are (well) known for G a general linear group, and a path to extend them will be detailed elsewhere. (The case when the leading coefficient is regular semisimple was established in [13], and one of the approaches there already involved multisummation.) Note that, except to motivate the definitions, the results of this appendix are not

used in the body of the article. [Section A.1](#) summarizes the (G -extension of the) local classification result, basically as it is presented in [46]. [Section A.2](#) explains how to relate this to Stokes representations and Stokes G -local systems. Finally [Section A.3](#) explains the global picture.

A.1. Local classification. Fix a maximal torus $T \subset G$, and consider the closed unit disc Δ in the complex plane with marked point 0 and irregular type Q at 0. If z is a coordinate vanishing at 0, consider the ring $\mathcal{O} = \mathbb{C}\{z\}$ of germs at 0 of holomorphic functions on Δ , its completion $\widehat{\mathcal{O}} = \mathbb{C}[[z]]$, and the corresponding fields of fractions $\mathcal{K} \subset \widehat{\mathcal{K}}$. Let $H = C_G(Q) \subset G$ be the stabiliser of Q so that $T \subset H$, and denote the Lie algebras $\mathfrak{t} \subset \mathfrak{h} \subset \mathfrak{g}$. Fix an element $\Lambda(z) \in \mathfrak{h}(\mathcal{K})$ and thus a connection

$$(44) \quad A^0 = dQ + \Lambda(z) \frac{dz}{z} \in \mathfrak{h}(\mathcal{K})dz$$

on the trivial H -bundle over the disc. Suppose Λ is such that the connection $\Lambda \frac{dz}{z}$ has a regular singularity at 0. In order to classify meromorphic connections formally equivalent to A^0 , it turns out to be simpler to first classify *marked pairs*, i.e. connections together with a choice of formal isomorphism with A^0 . To this end define

$$\mathcal{H}(Q) = \left\{ (A, \widehat{F}) \in \mathfrak{g}(\mathcal{K})dz \times G(\widehat{\mathcal{K}}) \mid \widehat{F}[A^0] = A \right\} / G(\mathcal{K})$$

to be the set of isomorphism classes of marked pairs. (Here the Lie algebra valued meromorphic one-forms A, A^0 are viewed as connections on trivial bundles and the square brackets denote the gauge action.) Note that the formal transformations \widehat{F} appearing here cannot be arbitrary since they relate two convergent connections. The main classification result may be stated as follows.

THEOREM A.1. *$\mathcal{H}(Q) \cong \text{Sto}(Q)$ so that $\mathcal{H}(Q)$ is isomorphic to a complex vector space.*

In more detail, such an isomorphism (taking a marked pair to its Stokes data) may be defined as follows. Let $\mathbb{A} \subset S^1$ denote the set of singular direction of Q at 0. (A priori, without making the definitions more abstract, the isomorphism depends on the choice of a fundamental solution of A^0 near each singular direction $d \in \mathbb{A}$.)

THEOREM A.2. (1) *If (A, \widehat{F}) is a marked pair representing an element of $\mathcal{H}(Q)$, then \widehat{F} is multisummable along each direction in $S^1 \setminus \mathbb{A}$.*

(2) *Given $d \in \mathbb{A}$, let $\Sigma_d^+(\widehat{F}), \Sigma_d^-(\widehat{F})$ be the G -valued holomorphic maps obtained by multisumming \widehat{F} in a small sector on the positive (resp. negative) side of d , and let Ψ_d be a fundamental solution of A^0 defined on a sectorial neighbourhood of d . Then, upon analytic continuation across d , both*

$$\Phi_d^+ := \Sigma_d^+(\widehat{F})\Psi_d \quad \text{and} \quad \Phi_d^- := \Sigma_d^-(\widehat{F})\Psi_d$$

are fundamental solutions of A and, moreover,

$$\Phi_d^- = \Phi_d^+ S_d$$

for some (z -independent) element $S_d \in \text{Sto}_d(Q)$.

(3) Repeating for each $d \in \mathbb{A}$ yields a surjective map

$$\left\{ (A, \widehat{F}) \in \mathfrak{g}(\mathcal{K})dz \times G(\widehat{\mathcal{K}}) \mid \widehat{F}[A^0] = A \right\} \rightarrow \text{Sto}(Q)$$

whose fibres are precisely the $G(\mathcal{K})$ orbits.

(If such \widehat{F} depends holomorphically on some parameters, then one can show that its multisums also vary holomorphically, and so $\text{Sto}(Q)$ is an analytic moduli space for marked pairs.) For G a general linear group, these results are known and are the result of work by many people; see especially [6], [46], [30] and references therein such as [57], [41], [9], [49], [7], [51]. Note, in particular, that there is an alternative sheaf-theoretic description of the Stokes data due to Deligne [30], although the above approach is more explicit. For other groups one may adapt the above proofs. (Presumably one can also use a Tannakian approach, in essence considering homomorphisms from the wild fundamental group of [51] in to G , but this seems to give less information—we really do want to work directly with G -valued Stokes data as in [13] in order to better understand the isomonodromy deformations and resulting braid group actions.)

A.2. Local groupoid representations. Now we will explain how Stokes representations arise from connections, essentially rephrasing the above picture (to keep better track of the choices of fundamental solution of A^0). Given the irregular curve $\Sigma = (\Delta, 0, Q)$ as above, let $\widetilde{\Sigma} \subset \widehat{\Sigma} \rightarrow \Sigma$ be the real blow up and the resulting punctured curve, as usual, and let $\partial_1, \partial_2 \subset \widetilde{\Sigma}$ denote the boundary circles, with ∂_1 lying over $0 \in \Sigma$. Draw a concentric circle (halo) \mathbb{H} through all the punctures in $\widetilde{\Sigma}$. Choose a connection A^0 with irregular type Q as in (44). Now consider a meromorphic connection A on the trivial G -bundle on Δ (singular only at 0), together with a formal isomorphism \widehat{F} at 0 between A^0 and A (using the inclusion $H \subset G$ to view A^0 as a G -connection).

Given this data there is a canonically defined Stokes G -local system \mathbb{L} on $\widetilde{\Sigma}$ (as defined in Remark 8.4). Namely, inside \mathbb{H} (near ∂_1) we take the H -local system \mathbb{L}_0 of solutions of A^0 , and outside \mathbb{H} we take \mathbb{L} to be the G -local system of solutions of A . To glue them together on each component of \mathbb{H} (between two consecutive singular directions) we use the corresponding multisum of \widehat{F} . This gives the desired Stokes G -local system.

Now choose basepoints $b_i \in \partial_i$ for $i = 1, 2$, and let $\Pi = \Pi_1(\widetilde{\Sigma}, \{b_1, b_2\})$ denote the corresponding fundamental groupoid. If we choose a framing of \mathbb{L}_0 at b_1 (equivalently this means choosing a fundamental solution of A^0 on a small cilium approaching 0 in the direction b_1) and a framing of \mathbb{L} at b_2 , then

taking the monodromy of \mathbb{L} with respect to these framings yields a Stokes representation $\rho \in \text{Hom}_{\mathbb{S}}(\Pi, G)$.

A.3. Global picture. Now suppose Σ is an arbitrary (algebraic) irregular curve, with irregular types Q_i at marked points a_1, \dots, a_m . Let $\widetilde{\Sigma} \subset \widehat{\Sigma} \rightarrow \Sigma$ be the real blow up and the resulting punctured curve as usual, and draw halos \mathbb{H}_i on $\widetilde{\Sigma}$ through the punctures near ∂_i for each i . Let A be a connection on an algebraic principal G -bundle E° on $\Sigma^\circ = \Sigma \setminus \{a_1, \dots, a_m\}$. We will say that “ A has irregular type Q_i at a_i ” if there is an extension E of E° across a_i , and a local trivialisation of E in a neighbourhood of a_i , such that A takes the form

$$(45) \quad dQ_i + \Gamma(z) \frac{dz}{z}$$

for some \mathfrak{g} valued map Γ (nonsingular at $z = 0$), where z is a local coordinate vanishing at a_i . If this is the case, it is possible pass to a new *formal* trivialisation of E at a_i in which the connection takes the form $A_i^0 = dQ_i + \Lambda_i(z) dz/z$, as in (44), with $\Lambda_i(z)$ a nonsingular \mathfrak{h}_i valued map (which may even be taken to be polynomial in z), where $\mathfrak{h}_i = \text{Lie}(H_i)$. In contrast to Sections A.1 and A.2 above, here the element Λ_i in the normal form A_i^0 (and thus the formal monodromy) is not fixed a priori.

If we choose such formal trivialisations \widehat{F}_i at each a_i , then there is a canonically determined Stokes G -local system \mathbb{L} on $\widetilde{\Sigma}$. Namely, we take the H_i -local system \mathbb{L}_i of solutions of A_i^0 inside \mathbb{H}_i and, in the interior of $\widetilde{\Sigma}$ (outside all the halos), define \mathbb{L} to be the G -local system of solutions of A . Then we glue \mathbb{L} and \mathbb{L}_i as above using the multiums of \widehat{F}_i on each component of \mathbb{H}_i . This leads to the following equivalence of categories.

THEOREM A.3. *There is an equivalence between the category of connections on algebraic principal G -bundles on Σ° having irregular type Q_i at a_i ($i = 1, \dots, m$) and the category of Stokes G -local systems on $\widetilde{\Sigma}$.*

If we now choose basepoints $b_i \in \partial_i$ and define the groupoid $\Pi = \Pi_1(\widetilde{\Sigma}, \{b_i\})$ as usual, then upon choosing a framing at b_i of the local system \mathbb{L}_i (for each i), a Stokes representation $\rho \in \text{Hom}_{\mathbb{S}}(\Pi, G)$ is obtained by taking the monodromy of the Stokes G -local system \mathbb{L} via these framings. Finally, recalling that \mathbf{H} acts on $\text{Hom}_{\mathbb{S}}(\Pi, G)$ (and here we see this action corresponds to changing the choice of framings), the above result implies

COROLLARY A.4. *The isomorphism classes of such connections (E°, A) with irregular type Q_i at each a_i correspond bijectively to the \mathbf{H} orbits in $\text{Hom}_{\mathbb{S}}(\Pi, G)$.*

Remark A.5. Various modifications of this are useful for some applications (such as isomonodromy or wild non-abelian Hodge theory). For example, rather than reducing at a conjugacy class $\mathcal{C} \subset \mathbf{H}$, one may use one of the

quasi-Hamiltonian \mathbf{H} -spaces $\widehat{\mathcal{C}}$ of [19, Th. B] (weighted conjugacy classes) to obtain spaces of Betti data (filtered Stokes representations) corresponding to meromorphic connections with unramified formal types on parahoric bundles, as in [59], [69], [19] in the tame case. The basic topological objects, *filtered Stokes G -local systems*, are defined by replacing H_i by a weighted parabolic subgroup $P_i \subset H_i$ in the definition in Remark 8.4, generalising to the irregular case the filtered G -local systems of [19, Rem. 2]. (Similarly, in the general linear case $G = \mathrm{GL}(V)$ one may glue on to $\mathrm{Hom}_{\mathbb{S}}(\Pi, G)$ some spaces $\mathcal{B}(V_{0i}, W_i)$ to obtain quasi-Hamiltonian spaces of Betti data for holonomic \mathcal{D} -modules with unramified formal types; cf. [30, p. 43] and [50, p. 60]—specifically, for each marked point $i = 1, \dots, m$, one takes $V_{0i} \subset V$ to be the kernel of Q_i , and W_i to be arbitrary. The tame case of this, when each $V_{0i} = V$, gives the explicit description of the perverse sheaves on Σ relative to $\{a_i\}$; cf. [50, p. 34] and [34].)

Appendix B. Stokes groups are groups

We will prove Lemma 7.3, which claimed that each of the sets $\mathcal{R}(d), \mathcal{R}(d, k)$ is a closed subset of some system of positive roots.

Proof. First we must show that if $\alpha, \beta \in \mathcal{R}(d)$, then any root of the form $\gamma = n\alpha + m\beta$ (for integers $n, m > 0$) is in $\mathcal{R}(d)$. Thus $e^{q_\alpha(z)}$ and $e^{q_\beta(z)}$ have maximal decay as $z \rightarrow 0$ in the direction d . Now $q_\gamma = nq_\alpha + mq_\beta$, so if the degrees of q_α and q_β are different, then the result is clear. Otherwise suppose the degrees are both k and the leading terms of q_α, q_β are $c_\alpha/z^k, c_\beta/z^k$ (resp.). Then the maximal decay condition for e^{q_α} means that c_α/z^k is real and negative when $\arg(z) = d$ (and similarly for e^{q_β}). Thus the leading term $nc_\alpha/z^k + mc_\beta/z^k$ of q_γ is again real and negative when $\arg(z) = d$, so $\gamma \in \mathcal{R}(d)$. Clearly the same argument also works for $\mathcal{R}(d, k)$. To show $\mathcal{R}(d)$ (and thus also $\mathcal{R}(d, k)$) is in some subset of positive roots, we will find $\lambda \in \mathfrak{t}_{\mathbb{R}}$ such that $\alpha(\lambda) > 0$ for all $\alpha \in \mathcal{R}(d)$. (By taking the derivative, the set of one-parameter subgroups $\mathrm{Hom}(\mathbb{C}^*, T)$ embeds as a lattice in \mathfrak{t} , and $\mathfrak{t}_{\mathbb{R}}$ is defined to be its real span, so that $\mathfrak{t} = \mathfrak{t}_{\mathbb{R}} \otimes \mathbb{C}$, and \mathcal{R} is a subset of the real dual of $\mathfrak{t}_{\mathbb{R}}$.) Fix $z \in \mathbb{C}^*$ with $\arg(z) = d$, and for each i , let $R_i = -\mathrm{Re}(A_i/z^{k_i}) \in \mathfrak{t}_{\mathbb{R}}$, where $Q = \sum A_i/z^{k_i}$. Thus $\alpha(R_i) > 0$ if $\alpha \in \mathcal{R}(d, k_i)$ and $\alpha(R_i) = 0$ if $\alpha \in \mathcal{R}(d, k_j)$ with $j < i$. Now set $\lambda_r = R_r$, and $\lambda_{r-1} = N\lambda_r + R_{r-1}$ for a large real number N . Since \mathcal{R} is finite, we can choose N large enough such that $\alpha(\lambda_{r-1}) > 0$ for any $\alpha \in \mathcal{R}(d, k_r) \cup \mathcal{R}(d, k_{r-1})$. Iterating (with $\lambda_{i-1} = N\lambda_i + R_{i-1}$ for various N) yields λ_1 with $\alpha(\lambda_1) > 0$ for any $\alpha \in \mathcal{R}(d)$, as required. (Note that we can move λ_1 off all the root hyperplanes by going one step further: setting $\lambda_0 = N\lambda_1 + R_0$ for any regular $R_0 \in \mathfrak{t}_{\mathbb{R}} \setminus \bigcup_{\alpha \in \mathcal{R}} \mathrm{Ker} \alpha$.) \square

References

- [1] A. ALEKSEEV, H. BURSZTYN, and E. MEINRENKEN, Pure spinors on Lie groups, in *From Probability to Geometry I. Volume in honor of the 60th birthday of Jean-Michel Bismut* (X. DAI, R. LÉANDRE, X. MA, and W. ZHANG, eds.), *Astérisque* **327**, 2009, pp. 131–199. [MR 2642360](#). [Zbl 1251.53052](#).
- [2] A. ALEKSEEV, Y. KOSMANN-SCHWARZBACH, and E. MEINRENKEN, Quasi-Poisson manifolds, *Canad. J. Math.* **54** (2002), 3–29. [MR 1880957](#). [Zbl 1006.53072](#). <http://dx.doi.org/10.4153/CJM-2002-001-5>.
- [3] A. ALEKSEEV, A. MALKIN, and E. MEINRENKEN, Lie group valued moment maps, *J. Differential Geom.* **48** (1998), 445–495. [MR 1638045](#). [Zbl 0948.53045](#). Available at <http://projecteuclid.org/euclid.jdg/1214460860>.
- [4] M. F. ATIYAH and R. BOTT, The Yang-Mills equations over Riemann surfaces, *Philos. Trans. Roy. Soc. London Ser. A* **308** (1983), 523–615. [MR 0702806](#). [Zbl 0509.14014](#). <http://dx.doi.org/10.1098/rsta.1983.0017>.
- [5] M. AUDIN, Lectures on gauge theory and integrable systems, in *Gauge Theory and Symplectic Geometry* (Montreal, PQ, 1995) (J. HURTUBISE and F. LALONDE, eds.), *NATO ASI Series C: Math & Phys.* **488**, Kluwer Acad. Publ., Dordrecht, 1997, pp. 1–48. [MR 1461568](#). [Zbl 0873.58016](#).
- [6] D. G. BABBITT and V. S. VARADARAJAN, *Local Moduli for Meromorphic Differential Equations*, *Astérisque* **169–170**, Math. Soc. France, Paris, 1989. [MR 1014083](#). [Zbl 0683.34003](#).
- [7] W. BALSER, B. L. J. BRAAKSMA, J.-P. RAMIS, and Y. SIBUYA, Multisummability of formal power series solutions of linear ordinary differential equations, *Asymptotic Anal.* **5** (1991), 27–45. [MR 1132079](#). [Zbl 0754.34057](#).
- [8] W. BALSER, W. B. JURKAT, and D. A. LUTZ, Birkhoff invariants and Stokes’ multipliers for meromorphic linear differential equations, *J. Math. Anal. Appl.* **71** (1979), 48–94. [MR 0545861](#). [http://dx.doi.org/10.1016/0022-247X\(79\)90217-8](http://dx.doi.org/10.1016/0022-247X(79)90217-8).
- [9] W. BALSER, W. B. JURKAT, and D. A. LUTZ, A general theory of invariants for meromorphic differential equations. II. Proper invariants, *Funkcial. Ekvac.* **22** (1979), 257–283. [MR 0577846](#). [Zbl 0473.34028](#). Available at <http://www.math.kobe-u.ac.jp/~fe/xml/mr0577846.xml>.
- [10] O. BIQUARD and P. P. BOALCH, Wild non-abelian Hodge theory on curves, *Compos. Math.* **140** (2004), 179–204. [MR 2004129](#). [Zbl 1051.53019](#). <http://dx.doi.org/10.1112/S0010437X03000010>.
- [11] P. P. BOALCH, Stokes matrices, Poisson Lie groups and Frobenius manifolds, *Invent. Math.* **146** (2001), 479–506. [MR 1869848](#). [Zbl 1044.53060](#). <http://dx.doi.org/10.1007/s002220100170>.
- [12] P. P. BOALCH, Symplectic manifolds and isomonodromic deformations, *Adv. Math.* **163** (2001), 137–205. [MR 1864833](#). [Zbl 1001.53059](#). <http://dx.doi.org/10.1006/aima.2001.1998>.
- [13] P. P. BOALCH, G -bundles, isomonodromy, and quantum Weyl groups, *Int. Math. Res. Not.* **2002**, no. 22, 1129–1166. [MR 1904670](#). [Zbl 1003.58028](#). <http://dx.doi.org/10.1155/S1073792802111081>.

- [14] P. P. BOALCH, From Klein to Painlevé via Fourier, Laplace and Jimbo, *Proc. London Math. Soc.* **90** (2005), 167–208. MR 2107041. Zbl 1070.34123. <http://dx.doi.org/10.1112/S0024611504015011>.
- [15] P. P. BOALCH, Quasi-Hamiltonian geometry of meromorphic connections, *Duke Math. J.* **139** (2007), 369–405, (Beware section 6 of the published version is not in the 2002 arXiv version). MR 2352135. Zbl 1126.53055. <http://dx.doi.org/10.1215/S0012-7094-07-13924-3>.
- [16] P. P. BOALCH, Some geometry of irregular connections on curves, 2007, Talk at Workshop on Gauge Theory and Representation Theory, IAS Princeton, transparencies available on author's webpage.
- [17] P. P. BOALCH, Irregular connections and Kac–Moody root systems, 2008. arXiv 0806.1050.
- [18] P. P. BOALCH, Through the analytic halo: Fission via irregular singularities, *Ann. Inst. Fourier (Grenoble)* **59** (2009), 2669–2684. MR 2649336. Zbl 1206.53086. <http://dx.doi.org/10.5802/aif.2503>.
- [19] P. P. BOALCH, Riemann–Hilbert for tame complex parahoric connections, *Transform. Groups* **16** (2011), 27–50. MR 2785493. Zbl 1232.34117. <http://dx.doi.org/10.1007/s00031-011-9121-1>.
- [20] P. P. BOALCH, Simply-laced isomonodromy systems, *Publ. Math. I.H.E.S.* **116** (2012), 1–68. Zbl 06120990. Available at <http://link.springer.com/article/10.1007/s10240-012-0044-8>.
- [21] P. P. BOALCH, Global Weyl groups and a new theory of multiplicative quiver varieties, 2013. arXiv 1307.1033.
- [22] A. I. BONDAL, A symplectic groupoid of triangular bilinear forms and the braid group, *Izv. Ross. Akad. Nauk Ser. Mat.* **68** (2004), 19–74. MR 2084561. Zbl 1084.58502. <http://dx.doi.org/10.1070/IM2004v068n04ABEH000495>.
- [23] A. BOREL, *Linear Algebraic Groups*, second ed., *Grad. Texts in Math.* **126**, Springer-Verlag, New York, 1991. MR 1102012. Zbl 0726.20030. <http://dx.doi.org/10.1007/978-1-4612-0941-6>.
- [24] L. BOUTET DE MONVEL, \mathcal{D} -modules holonomes réguliers en une variable, in *Mathematics and Physics* (Paris, 1979/1982), *Progr. Math.* **37**, Birkhäuser, Boston, MA, 1983, pp. 313–321. MR 0728427. Zbl 0578.35080.
- [25] H. CASSENS and P. SŁODOWY, On Kleinian singularities and quivers, in *Singularities* (Oberwolfach, 1996), *Progr. Math.* **162**, Birkhäuser, Basel, 1998, pp. 263–288. MR 1652478. Zbl 0957.14004. http://dx.doi.org/10.1007/978-3-0348-8770-0_14.
- [26] S. CECOTTI and C. Vafa, On classification of $N = 2$ supersymmetric theories, *Comm. Math. Phys.* **158** (1993), 569–644. MR 1255428. Zbl 0787.58049. <http://dx.doi.org/10.1007/BF02096804>.
- [27] W. CRAWLEY-BOEVEY and P. SHAW, Multiplicative preprojective algebras, middle convolution and the Deligne–Simpson problem, *Adv. Math.* **201** (2006), 180–208. MR 2204754. Zbl 1095.15014. <http://dx.doi.org/10.1016/j.aim.2005.02.003>.

- [28] C. DE CONCINI, V. G. KAC, and C. PROCESI, Quantum coadjoint action, *J. Amer. Math. Soc.* **5** (1992), 151–189. MR 1124981. Zbl 0747.17018. <http://dx.doi.org/10.2307/2152754>.
- [29] P. DELIGNE, *Équations Différentielles à Points Singuliers Réguliers*, *Lecture Notes in Math* **163**, Springer-Verlag, New York, 1970. MR 0417174. Zbl 0244.14004. <http://dx.doi.org/10.1007/BFb0061194>.
- [30] P. DELIGNE, B. MALGRANGE, and J.-P. RAMIS, *Singularités Irrégulières*, *Doc. Math. (Paris)* **5**, Soc. Math. France, Paris, 2007. MR 2387754. Zbl 1130.14001.
- [31] J.-M. DRÉZET, Luna’s slice theorem and applications, in *Algebraic Group Actions and Quotients*, Hindawi Publ. Corp., Cairo, 2004, pp. 39–89. MR 2210794. Zbl 1109.14307.
- [32] B. DUBROVIN, Geometry of 2D topological field theories, in *Integrable Systems and Quantum Groups* (Montecatini Terme, 1993), *Lecture Notes in Math.* **1620**, Springer-Verlag, New York, 1996, pp. 120–348. MR 1397274. Zbl 0841.58065. <http://dx.doi.org/10.1007/BFb0094793>.
- [33] H. FLASCHKA and A. C. NEWELL, The inverse monodromy transform is a canonical transformation, in *Nonlinear Problems: Present and Future* (Los Alamos, N.M., 1981), *North-Holland Math. Stud.* **61**, North-Holland, Amsterdam, 1982, pp. 65–89. MR 0675628. Zbl 0555.35107. [http://dx.doi.org/10.1016/S0304-0208\(08\)71041-7](http://dx.doi.org/10.1016/S0304-0208(08)71041-7).
- [34] S. GELFAND, R. MACPHERSON, and K. VILONEN, Perverse sheaves and quivers, *Duke Math. J.* **83** (1996), 621–643. MR 1390658. Zbl 0861.32022. <http://dx.doi.org/10.1215/S0012-7094-96-08319-2>.
- [35] W. M. GOLDMAN, The symplectic nature of fundamental groups of surfaces, *Adv. in Math.* **54** (1984), 200–225. MR 0762512. Zbl 0574.32032. [http://dx.doi.org/10.1016/0001-8708\(84\)90040-9](http://dx.doi.org/10.1016/0001-8708(84)90040-9).
- [36] R. C. GUNNING, *Lectures on Vector Bundles over Riemann Surfaces*, *Math. Notes*, Princeton Univ. Press, Princeton, NJ, 1967. MR 0230326. Zbl 0163.31903.
- [37] N. J. HITCHIN, The self-duality equations on a Riemann surface, *Proc. London Math. Soc.* **55** (1987), 59–126. MR 0887284. Zbl 0634.53045. <http://dx.doi.org/10.1112/plms/s3-55.1.59>.
- [38] N. J. HITCHIN, Frobenius manifolds, in *Gauge Theory and Symplectic Geometry* (J. HURTUBISE and F. LALONDE, eds.), *NATO ASI Series C: Math & Phys.* **488**, Kluwer Acad., Publ., Dordrecht, 1997. MR 1461570. Zbl 0867.53027. <http://dx.doi.org/10.1007/978-94-017-1667-3.3>.
- [39] M. JIMBO, T. MIWA, and K. UENO, Monodromy preserving deformation of linear ordinary differential equations with rational coefficients. I. General theory and τ -function, *Phys. D* **2** (1981), 306–352. MR 0630674. Zbl 1194.34167. [http://dx.doi.org/10.1016/0167-2789\(81\)90013-0](http://dx.doi.org/10.1016/0167-2789(81)90013-0).
- [40] D. JOHNSON and J. J. MILLSON, Deformation spaces associated to compact hyperbolic manifolds, in *Discrete Groups in Geometry and Analysis* (New Haven, Conn., 1984), *Progr. Math.* **67**, Birkhäuser, Boston, MA, 1987, pp. 48–106. MR 0900823. Zbl 0664.53023.

- [41] W. B. JURKAT, *Meromorphe Differentialgleichungen, Lecture Notes in Math.* **637**, Springer-Verlag, New York, 1978. MR 0494886. Zbl 0408.34004. <http://dx.doi.org/10.1007/BFb0068236>.
- [42] D. KAZHDAN and G. LUSZTIG, Fixed point varieties on affine flag manifolds, *Israel J. Math.* **62** (1988), 129–168. MR 0947819. Zbl 0658.22005. <http://dx.doi.org/10.1007/BF02787119>.
- [43] A. D. KING, Moduli of representations of finite-dimensional algebras, *Quart. J. Math. Oxford Ser.* **45** (1994), 515–530. MR 1315461. Zbl 0837.16005. <http://dx.doi.org/10.1093/qmath/45.4.515>.
- [44] V. P. KOSTOV, Additive Deligne-Simpson problem for non-Fuchsian systems, *Funkcial. Ekvac.* **53** (2010), 395–410. MR 2761090. Zbl 1246.15018. <http://dx.doi.org/10.1619/fesi.53.395>.
- [45] I. KRICHEVER, Isomonodromy equations on algebraic curves, canonical transformations and Whitham equations, *Mosc. Math. J.* **2** (2002), 717–752, 806. MR 1986088. Zbl 1044.70010. Available at <http://www.ams.org/distribution/mmj/vol2-4-2002/krichever.pdf>.
- [46] M. LODAY-RICHAUD, Stokes phenomenon, multisummability and differential Galois groups, *Ann. Inst. Fourier (Grenoble)* **44** (1994), 849–906. MR 1303886. Zbl 0812.34004. <http://dx.doi.org/10.5802/aif.1419>.
- [47] D. LUNA, Slices étales, in *Sur les Groupes Algébriques*, *Bull. Soc. Math. France Mém.* **33**, Société Mathématique de France, Paris, 1973, p. 105. MR 0318167. Zbl 0286.14014.
- [48] P. MAISONOBE, Faisceaux pervers sur \mathbf{C} relativement à $\{0\}$ et couple $u : E \rightleftharpoons F : v$, in *Introduction à la Théorie Algébrique des Systèmes Différentiels* (Plans-sur-Bex, 1984), *Travaux en Cours* **34**, Hermann, Paris, 1988, pp. 135–146. MR 1018867. Zbl 0684.32009.
- [49] B. MALGRANGE, Remarques sur les équations différentielles à points singuliers irréguliers, in *Équations différentielles et systèmes de Pfaff dans le champ complexe* (Sem., Inst. Rech. Math. Avancée, Strasbourg, 1975), *Lecture Notes in Math.* no. 712, Springer-Verlag, New York, 1979, pp. 77–86. MR 0548145. Zbl 0423.32014. <http://dx.doi.org/10.1007/BFb0062817>.
- [50] B. MALGRANGE, *Équations Différentielles à Coefficients Polynomiaux*, *Progr. Math.* **96**, Birkhäuser, Boston, MA, 1991. MR 1117227. Zbl 0764.32001.
- [51] J. MARTINET and J.-P. RAMIS, Elementary acceleration and multisummability. I, *Ann. Inst. H. Poincaré Phys. Théor.* **54** (1991), 331–401. MR 1128863. Zbl 0748.12005. Available at http://www.numdam.org/item?id=AIHPA_1991__54_4_331_0.
- [52] H. NAKAJIMA, Hyper-Kähler structures on moduli spaces of parabolic Higgs bundles on Riemann surfaces, in *Moduli of Vector Bundles* (Sanda, 1994; Kyoto, 1994), *Lecture Notes in Pure Appl. Math.* no. 179, Dekker, New York, 1996, pp. 199–208. MR 1397988. Zbl 0881.14006.
- [53] J.-P. RAMIS, Phénomène de Stokes et resommation, *C. R. Acad. Sci. Paris Sér. I Math.* **301** (1985), 99–102. MR 0799602. Zbl 0582.34006.

- [54] R. W. RICHARDSON, Conjugacy classes of n -tuples in Lie algebras and algebraic groups, *Duke Math. J.* **57** (1988), 1–35. MR 0952224. Zbl 0685.20035. <http://dx.doi.org/10.1215/S0012-7094-88-05701-8>.
- [55] R. J. SCHILLING, Baker functions for compact Riemann surfaces, *Proc. Amer. Math. Soc.* **98** (1986), 671–675. MR 0861773. Zbl 0614.58022. <http://dx.doi.org/10.2307/2045748>.
- [56] G. SEGAL and G. WILSON, Loop groups and equations of KdV type, *Inst. Hautes Études Sci. Publ. Math.* **61** (1985), 5–65. MR 0783348. Zbl 0592.35112. <http://dx.doi.org/10.1007/BF02698802>.
- [57] Y. SIBUYA, Stokes phenomena, *Bull. Amer. Math. Soc.* **83** (1977), 1075–1077. MR 0442337. Zbl 0386.34008. <http://dx.doi.org/10.1090/S0002-9904-1977-14391-7>.
- [58] A. S. SIKORA, Character varieties, *Trans. Amer. Math. Soc.* **364** (2012), 5173–5208. MR 2931326. Zbl 06191466. <http://dx.doi.org/10.1090/S0002-9947-2012-05448-1>.
- [59] C. T. SIMPSON, Harmonic bundles on noncompact curves, *J. Amer. Math. Soc.* **3** (1990), 713–770. MR 1040197. Zbl 0713.58012. <http://dx.doi.org/10.2307/1990935>.
- [60] C. T. SIMPSON, Moduli of representations of the fundamental group of a smooth projective variety. II, *Inst. Hautes Études Sci. Publ. Math.* **80** (1995), 5–79. MR 1320603. Zbl 0891.14006. <http://dx.doi.org/10.1007/BF02698895>.
- [61] S. SZABÓ, Nahm transform for integrable connections on the Riemann sphere, *Mém. Soc. Math. Fr.* (2007), ii+114 pp. (2008). MR 2482471. Zbl 1213.53005.
- [62] M. UGAGLIA, On a Poisson structure on the space of Stokes matrices, *Internat. Math. Res. Notices* (1999), 473–493. MR 1692595. Zbl 0939.34073. <http://dx.doi.org/10.1155/S1073792899000240>.
- [63] M. VAN DEN BERGH, Double Poisson algebras, *Trans. Amer. Math. Soc.* **360** (2008), 5711–5769. MR 2425689. Zbl 1157.53046. <http://dx.doi.org/10.1090/S0002-9947-08-04518-2>.
- [64] M. VAN DEN BERGH, Non-commutative quasi-Hamiltonian spaces, in *Poisson Geometry in Mathematics and Physics, Contemp. Math.* **450**, Amer. Math. Soc., Providence, RI, 2008, pp. 273–299. MR 2397630. Zbl 1236.58019. <http://dx.doi.org/10.1090/conm/450/08745>.
- [65] A. WEIL, Remarks on the cohomology of groups, *Ann. of Math.* **80** (1964), 149–157. MR 0169956. Zbl 0192.12802. <http://dx.doi.org/10.2307/1970495>.
- [66] E. WITTEN, Gauge theory and wild ramification, *Anal. Appl. (Singap.)* **6** (2008), 429–501. MR 2459120. Zbl 1177.81101. <http://dx.doi.org/10.1142/S0219530508001195>.
- [67] N. M. J. WOODHOUSE, The symplectic and twistor geometry of the general isomonodromic deformation problem, *J. Geom. Phys.* **39** (2001), 97–128. MR 1844829. Zbl 1116.32015. [http://dx.doi.org/10.1016/S0393-0440\(01\)00003-1](http://dx.doi.org/10.1016/S0393-0440(01)00003-1).

- [68] P. XU, Dirac submanifolds and Poisson involutions, *Ann. Sci. École Norm. Sup.* **36** (2003), 403–430. MR 1977824. Zbl 1047.53052. [http://dx.doi.org/10.1016/S0012-9593\(03\)00013-2](http://dx.doi.org/10.1016/S0012-9593(03)00013-2).
- [69] D. YAMAKAWA, Geometry of multiplicative preprojective algebra, *Int. Math. Res. Pap. IMRP* **2008**, Art. ID rpn008, 77pp. MR 2470573. Zbl 1197.16019. <http://dx.doi.org/10.1093/imrp/rpn008>.

(Received: December 15, 2011)

(Revised: September 7, 2012)

ÉCOLE NORMALE SUPÉRIEURE AND CNRS, PARIS, FRANCE

E-mail: boalch@dma.ens.fr

www.math.ens.fr/~boalch